



AT-12842 B-35062

478' x 62' 6K LNG Bunker ATB

The 6000m³ LNG Bunker Articulated Tug/Barge Unit (ATB) is designed for unrestricted ocean service and features advanced LNG handling systems for loading, bunkering, and managing boil-off gas and full flow vapor return. It conditions cargo to deep cryogenic temperatures, offers N₂ inerting, and provides gas-up and cool-down services for Type C and membrane LNG tanks. The tug is based on a proven platform with a successful history of operation.

Tug Specification Highlights

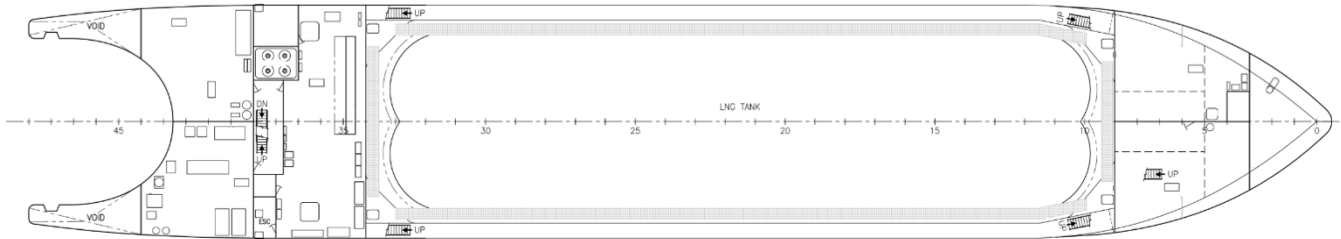
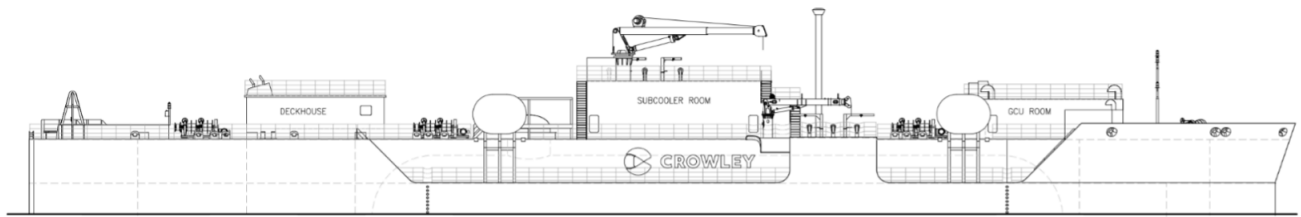
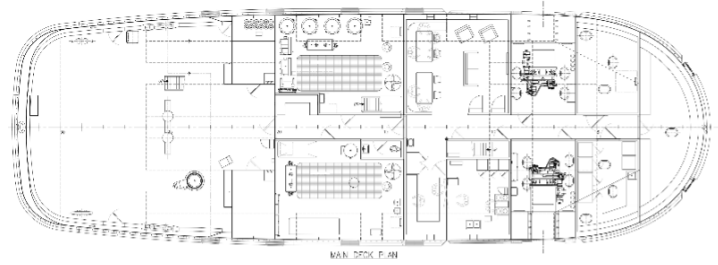
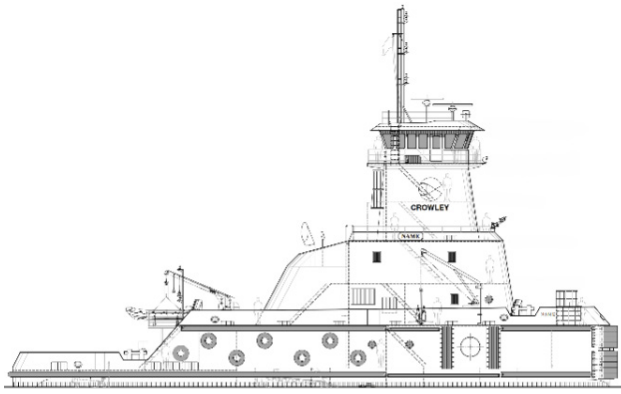
Overall Length.....	128'
Molded Beam.....	42'
Design Draft.....	18'
Ballast	79,430 gal
Potable Water	11,290 gal
Fuel Oil (98%).....	122,290 gal
Lube Oil (98%)	3,700 gal
Main Engines	2 x WABTEC 8L250MDC
Thrusters	2 x Schottel SRP560FP Azimuthing
Aux. Generators	3 x John Deere 4045AFM85
EDG	1 x John Deere 4045AFM85
Regulatory	✧A1 Towing Vessel, ✧AMS, ✧ACCU, UWILD

Barge Specification Highlights

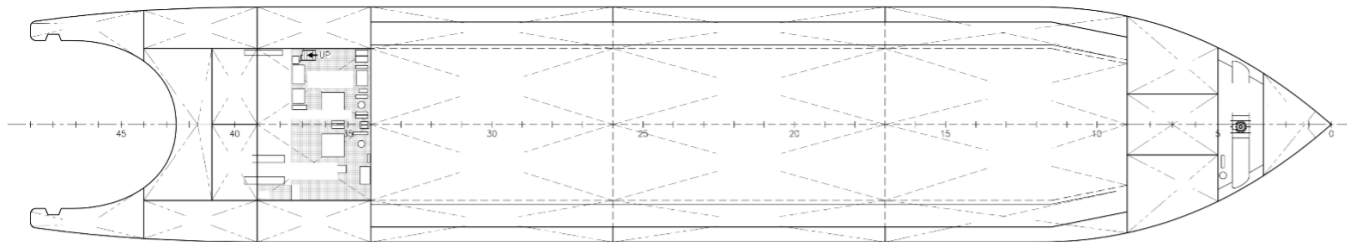
Overall Length.....	350'
Molded Breadth	62'
Draft (Max Loaded).....	25'

Specialized Equipment & Regulatory

LNG Storage Tanks.....	1 x 6100 m ³ Class C Type Bi-Lobe LNG Tanks
Transfer Pumps	2 x LNG cargo pumps
Gas Combustion Unit.....	SAAKE horizontal GCU
Sub-Cooler	Air Liquide TBF-350
Regulatory	✧A1 Liquefied Gas Tank Barge, ATB, Unrestricted Ocean Service, GCU, RELIQ, LNG Bunkering, CPS, UWILD, REMOTE-CON (AUX)



MAIN DECK



INNER BOTTOM