

AT-12842 B-35062

# 478' x 62' 6K LNG Bunker ATB

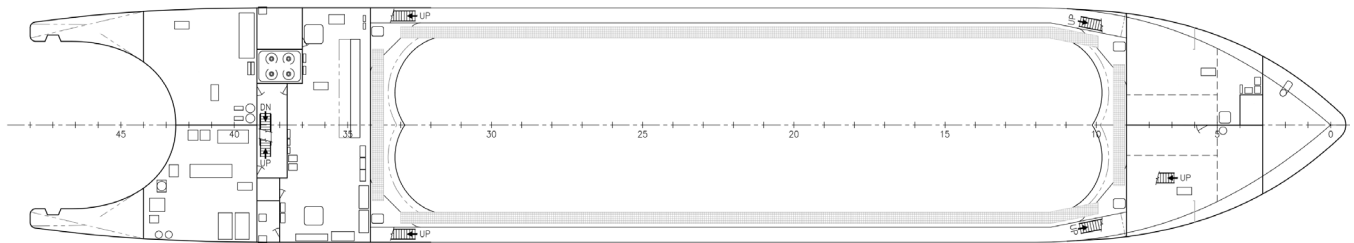
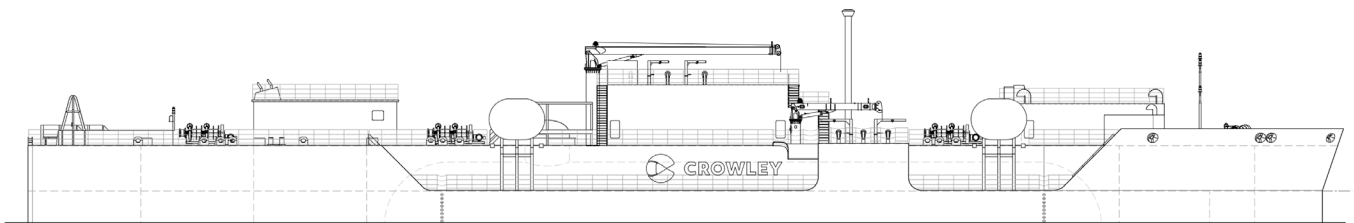
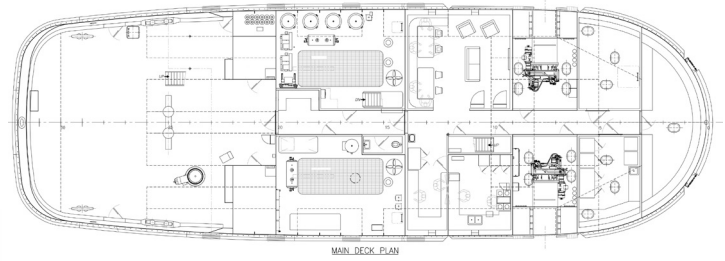
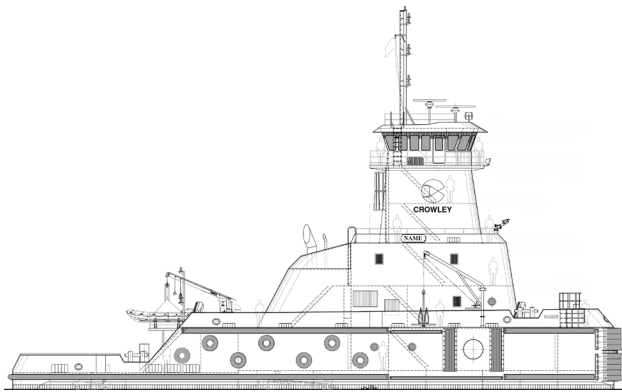
The 6000 m<sup>3</sup> LNG Bunker Articulated Tug/Barge Unit (ATB) has been designed with process-based LNG handling systems capable of loading and bunkering to and from ship or shore at full flow vapor return and manage boil off gas pressure through pressure accumulation, sub-cooling, and gas combustion unit. The system is specifically designed to condition cargo to deep cryogenic temperatures, provide N<sub>2</sub> inerting plus gas up (NG) and cool down specialty services to C-type and membrane atmospheric LNG tanks. The vessel utilizes the proven Crowley design "AVEOGAN" Class tug with a vessel speed of 12 knots at NCR with 15% sea margin.

## Tug Overall Dimensions

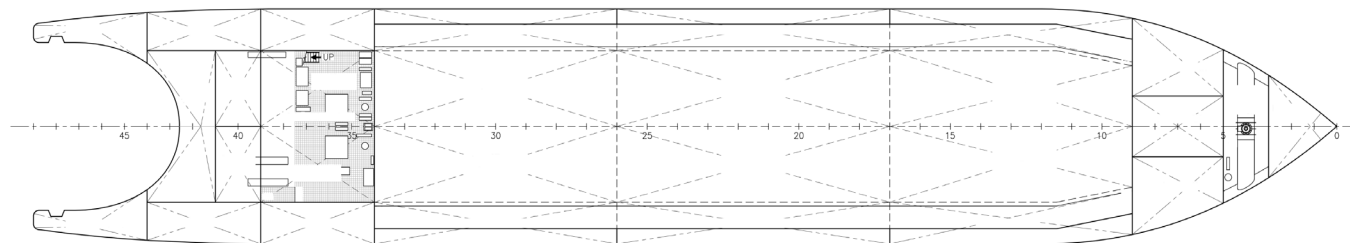
Overall Length.....	128'-0"
Molded Beam .....	42'-0"
Draft .....	18'-6"
Ballast .....	79,430 gal
Fresh Water .....	11,290 gal
Fuel .....	121,400 gal
Lube Oil .....	3,700 gal
Emission Standards .....	EPA Tier 4
Classification .....	ABS Class ✱A1 Towing Vessel, USCG Sub M, SOLAS, Loadline

## Barge Overall Dimensions

Overall Length.....	350'-0"
Molded Breadth .....	62'-0"
Draft .....	26'-1"
Ballast .....	1,358,927 gal
Cargo Fuel.....	1,585,000 gal
Emission Standards .....	EPA Tier 3, IMO Tier 3
Classification .....	✱A1 Liquefied Gas Tank Barge, Unrestricted Ocean Service, GCU, RELIQ, LNG Bunkering, CRC, CPS, UWILD, REMOT-CON



MAIN DECK



INNER BOTTOM