



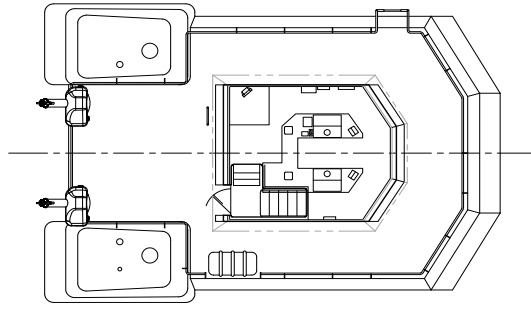
THS-09238C

92' x 38' Ship Assist Tug

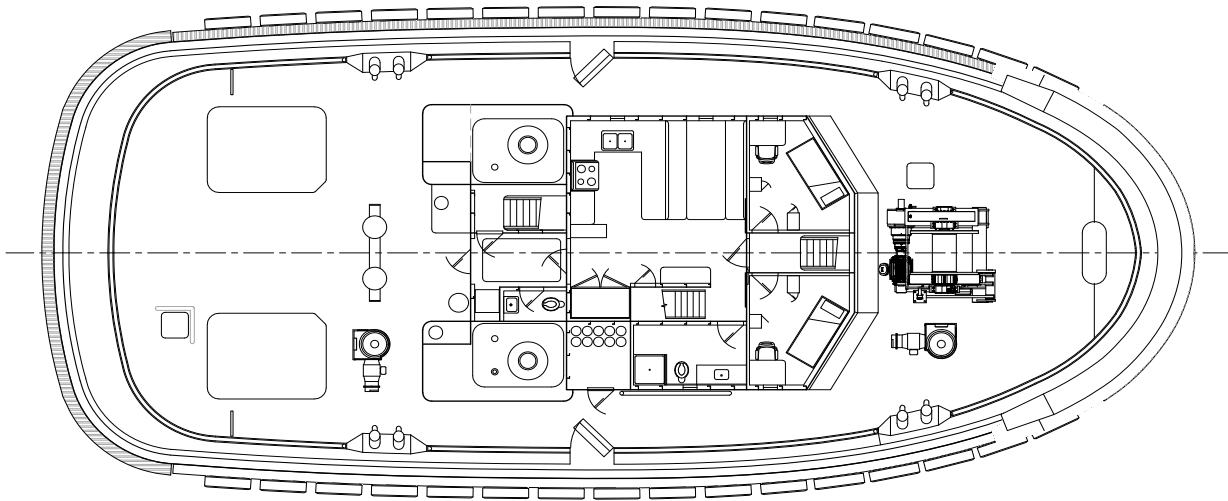
Crowley's 92-foot hull design has been continually refined to meet evolving customer needs and regulatory changes from the US EPA and Coast Guard Subchapter M. Originally built with a 50 short ton bollard pull, it now reaches 90 short tons with Azimuth Stern Drives, making it suitable for ship assist, tanker escort, and emergency firefighting. The latest model features two Caterpillar 3516E Tier IV diesel engines, each rated at 3,004 HP, and Kongsberg 255 fixed pitch Z-drives. Built to ABS standards, it is certified for full ocean service, FFV1, and escort class towing.

Overall Dimensions

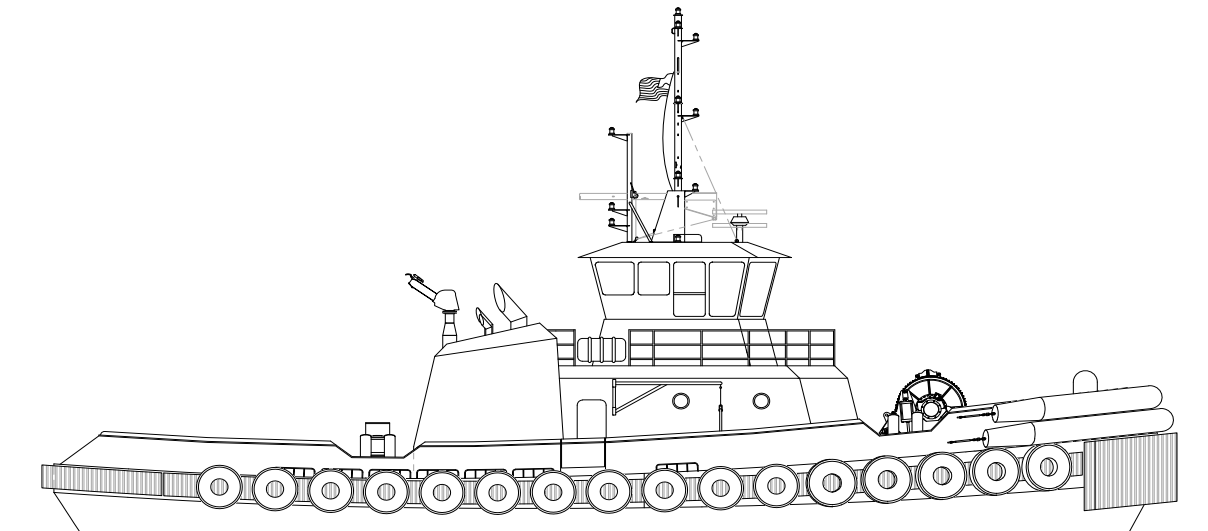
Overall Length	92'-0"	Lube Oil	514 gal
Breadth	38'-0"	Fresh Water	16,862 gal
Molded Depth	16'-9"	Bollard Pull	90 ST
Propulsion	2 x CAT 3516E @ 3,004 HP each 2 x Kongsberg 255 FP Z-Drives	Tonnage	US Regulatory <200 International <500
Fire Fighting	2 x 5,230 GPM Monitors ABS FFV1 Class	Total Berthing	8
Fuel Oil	44,193 gal		



BRIDGE DECK



MAIN DECK



OUTBOARD PROFILE