



AT-12842 B-40085

# 528' x 85' 100K Barrel Barge ATB

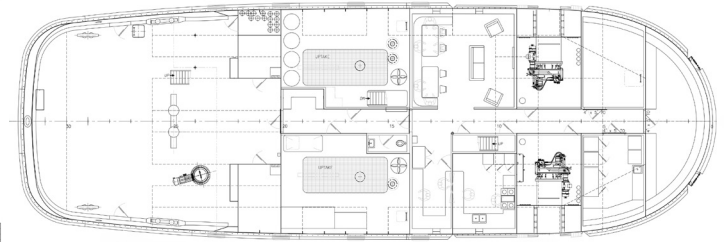
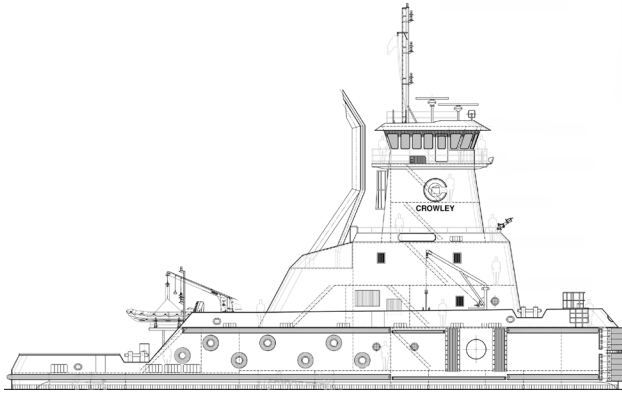
The 100K Barrel Barge consists of a hydrodynamically efficient tank barge coupled with a high-horsepower tug via a hinged connection, allowing independent pitching while maintaining a solid connection for maneuverability. The tug has Azimuthing drives and an Intercon C-series coupling system with a lightering helmet. It features a USCG approved closed-loop freshwater ballast system to handle fuel burn, eliminating the need to discharge ballast water into the sea. This ATB was designed to meet Ice Class and Polar Code requirements, with increased structural framing, shell plating, and extended zero discharge endurance. The double-hulled design features a barge form factor to achieve high-cargo capacity on minimal draft.

## Tug Specification Highlights

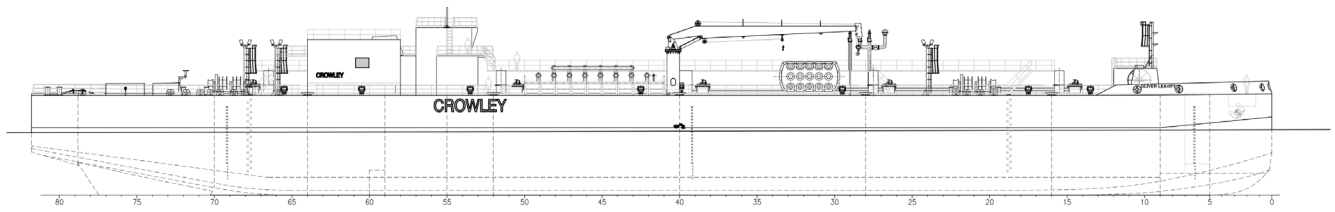
Overall Length.....	128'-0"
Molded Beam .....	42'-0"
Draft .....	18'-6"
Ballast .....	78,300 gal
Bollard Pull.....	97 ST
Fresh Water .....	11,200 gal
Fuel .....	122,200 gal
Lube Oil .....	5,190 gal
Emission Standards .....	EPA Tier 4, IMO Tier 3
Classification .....	✱ACCU, ABS, ✱A1 Towing Vessel, ✱AMS, UWILD, Ice Class D0, IHM, SOLAS, Designed to IMO Polar Code for Category C

## Barge Specification Highlights

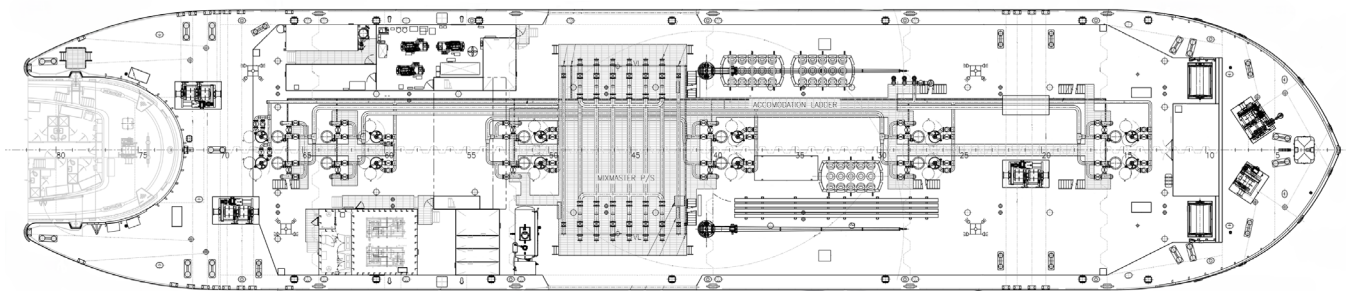
Molded Length .....	400'-0"
Molded Breadth .....	85'-0"
Draft .....	22'-0"
Ballast .....	1,674,366 gal
Fuel .....	17,600 gal
Cargo Fuel.....	101,000 BBL
Emission Standards .....	EPA Tier 3, IMO Tier 2
Classification .....	ABS, BWT, UWILD, IH ✱A1 Oil Tank Barge, CPS, Ice Class D0



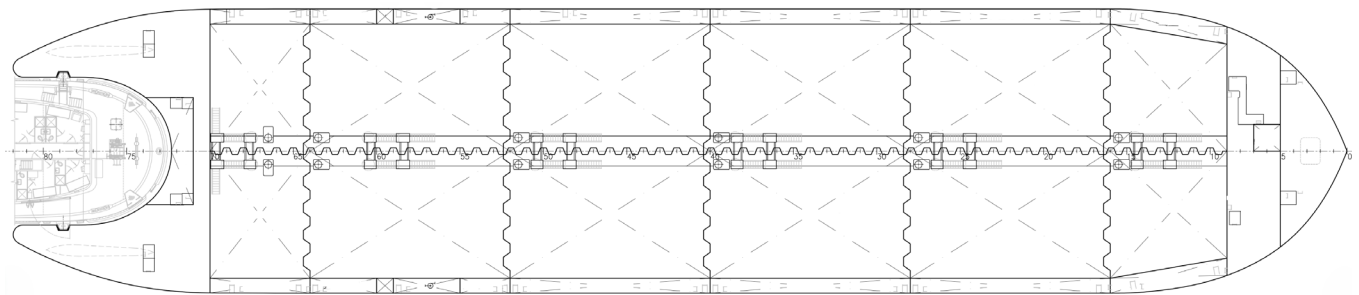
MAIN DECK PLAN



OUTBOARD PROFILE



MAIN DECK



TANK PLAN