



THS-06524

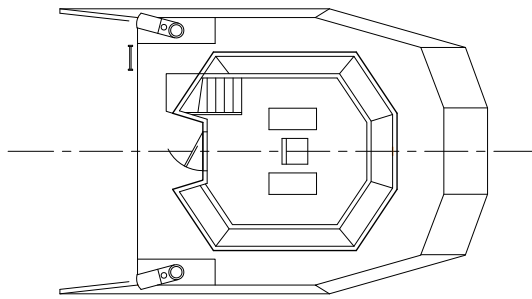
65' x 24' Ship Assist Tug

The 65-ft Ship Assist Tug is a multipurpose vessel that follows the general design and layout of a small ASD tug. Equipped with Caterpillar main engines driving Thrustmaster Z-drives, the vessel can operate as an assist tug for the docking and handling of barges and ships. The tug can tow inter-island and was developed to reduce adverse environmental impacts from the transportation of oil products. The large clear aft deck, measuring 31-ft long with 21-ft inside the bulwarks, is fitted with a hose reel for handling absorbent boom for oil spill response work. Storage lockers provide additional stowage for other response equipment. The vessel is fitted with the same fendering as one would find on a harbor tug and is equipped with a small fire monitor. There are berths for up to 4 crew below the main deck.

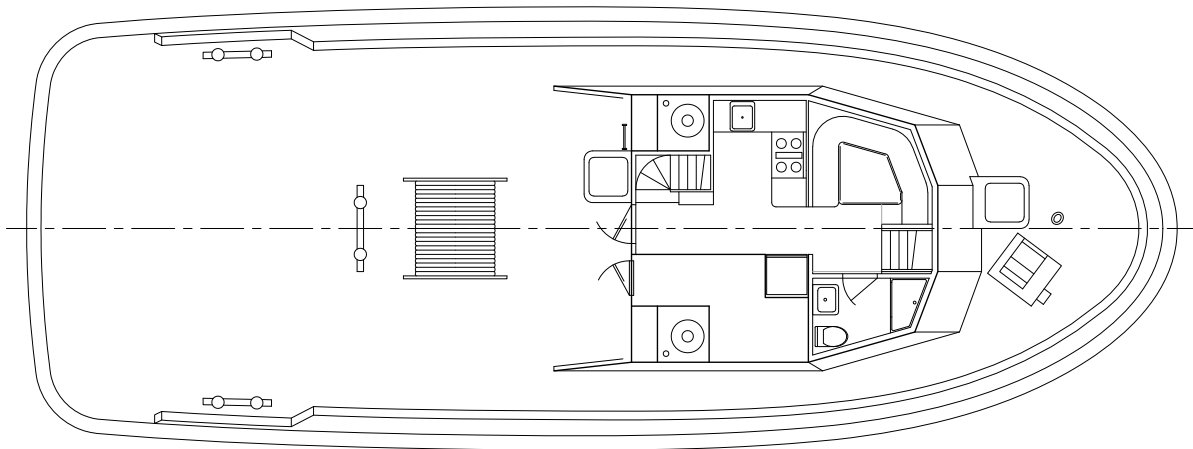
Overall Dimensions

Molded Length 65'
 Molded Breadth 24'
 Molded Depth 10'
 Bollard Pull 14 ST
 Horsepower 1,170 continuous BHP
 Fuel Oil 9,300 gal

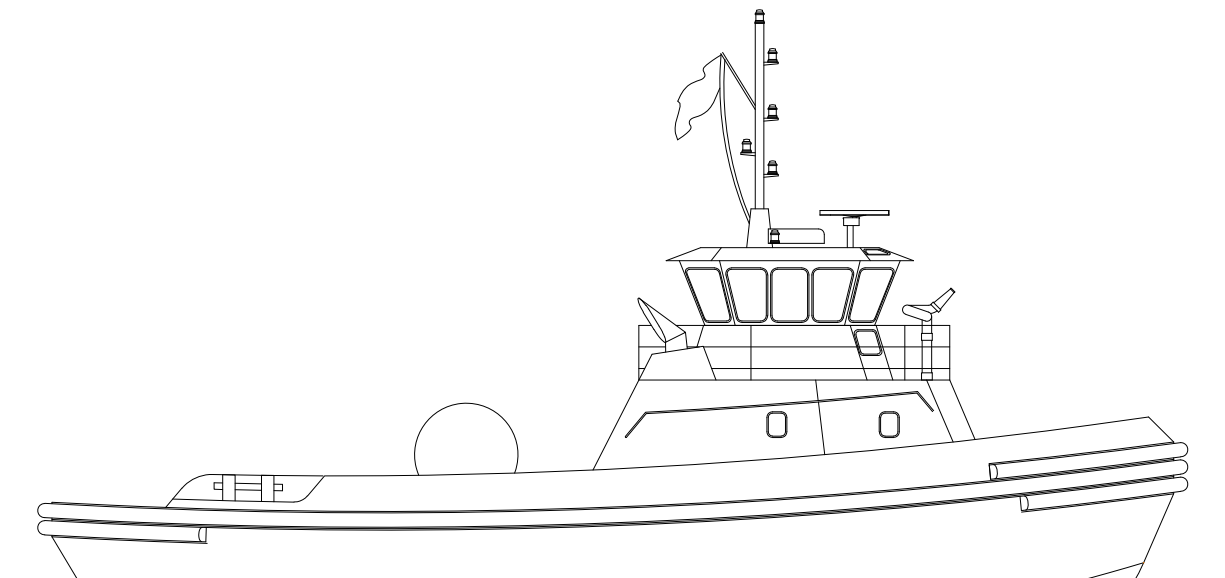
Main Power 2 x CAT 3406E
 Propulsion 2 x Thrustmaster Z-Drives
 Auxiliary Engines 2 x Northern Light
 MP445D, 45kW
 Hawser Winch None
 Berths 4



BRIDGE DECK



MAIN DECK



OUTBOARD PROFILE

65'x24' Z-DRIVE TUG