

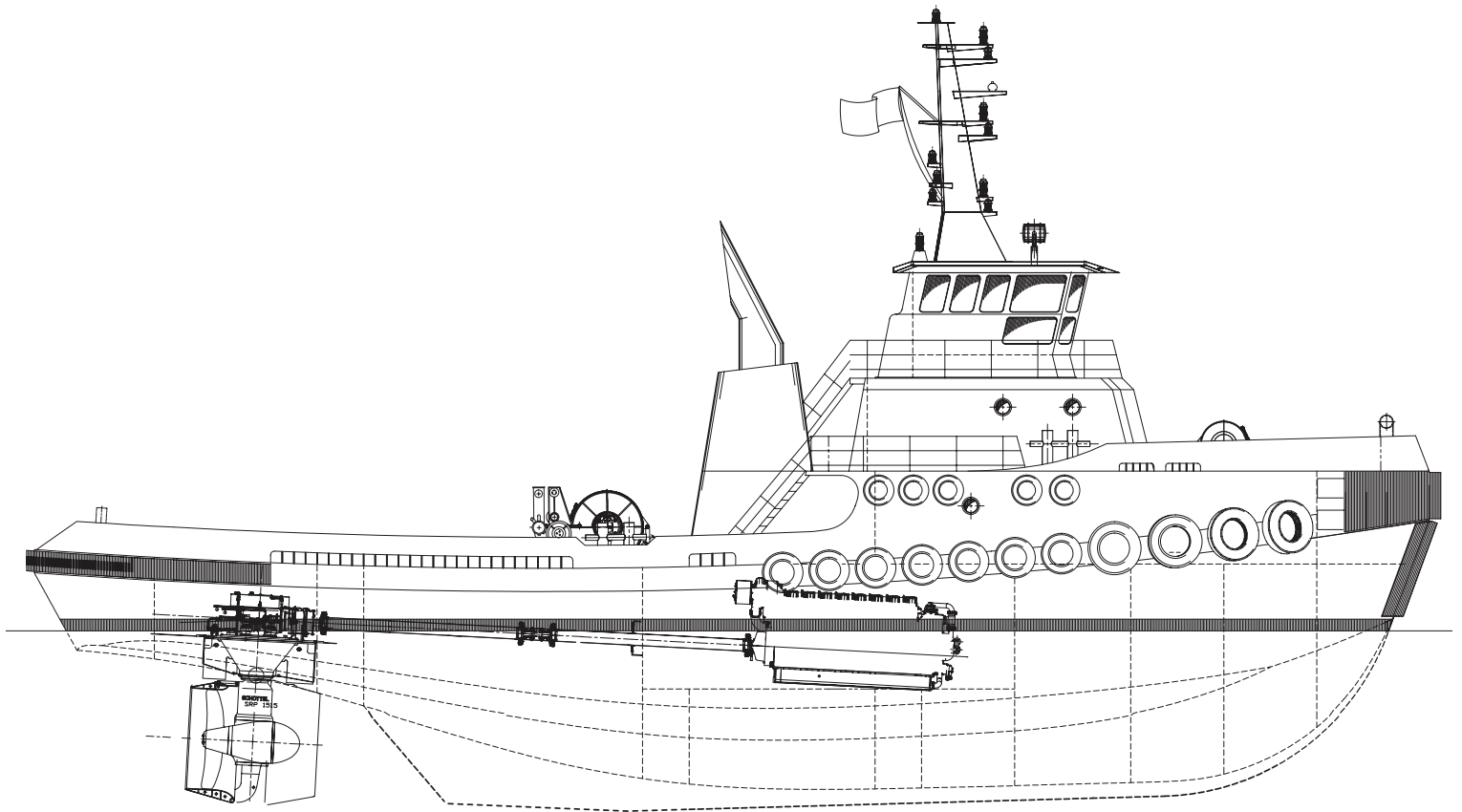


MONTANA & WASHINGTON

# TITAN CLASS TUGBOATS

Crowley is pleased to introduce the Titan Class tugboats, Montana, built in 2015, and Washington, delivered in March, 2014, as part of its continued commitment to meeting the ocean towing needs of its project management customers. Designed by Crowley's Seattle-based naval architecture and marine engineering firm, the two 120' x 35' x 20' ABS machinery class oceangoing tugboats, are powered by twin GE 8L250 EPA Tier II & III engines, each rated at 2679 HP/1999 KW at 900 RPM. The ABS Maltese Cross A1, towing service, machinery-classed Montana and Washington consume significantly less fuel and enjoy much lower maintenance costs than other equivalently powered oceangoing tugboats.

Measuring 497 international tons and 91 regulatory tons, the tugs meet all requirements for unrestricted world navigation and are equipped to allow for a scalable crew. They are fitted with a pair of Schottel FP1515 Z-drive units for superior maneuverability of tows in port and in close quarters. Living spaces are acoustically-dampened and fire proofed using the NORAC and Danacoustic systems, ensuring crew comfort and safety. To learn more, or to put these boats to work on your next project, please contact our Offshore Services team today.



# Vessel Specifications

## Flag Registry

United States (U.S.)

## Overall Dimensions

Length . . . . .120' • 36.576m  
 Beam . . . . .35' • 10.668m  
 Depth . . . . .21' • 6.4008m  
 Loaded Draft . 20' • 6.096m  
 Light Draft . . .17'6" • 5.334m

## Tonnage

U.S. Regulatory .91  
 International . . .497

## Capacities

Fuel . . . . .158,000 gal.  
 Potable Water . .11,000 gal.

## Main Propulsion

Montana  
 Main . . . (2) GE 8L250 Tier 3  
 Aux. . . . (2) 1185KW John Deere/  
 Kohler Gensets

## Washington

Main . . . (2) GE 8L250 Tier 2  
 Aux. . . . (2) 180KW John Deere  
 6081A/Kohler

## Horsepower

Montana 5400 HP  
 Washington 5400 HP

## Z-Drives Thrusters

(2) - Schottell FP1515; 2600mm  
 diameter stainless steel propeller,  
 outboard rotation

## Continuous Bollard Pull

ABS Certified  
 Montana 82.5 tons  
 Washington 82.5 tons

## Double Drum Tow Winch

2600' x 2-1/4"; 1800' x 2" Wire;  
 Independent Capstan

## Headline Winch

450'x7" Synthetic Line Reel Plus  
 Independent Capstan

## Emergency Tow Line

600' 7" Dyneema Towing Package

## Accommodations/Bunks

10

## Navigation Equipment

Dual Radars, VHF Radios, Satellite  
 Communications, GMDSS

## Builder

JT Marine Inc.

## Designers

Crowley  
 Crescere Maritime

## Certification

ABS + A1, AMS Machinery Class,  
 Towing Service, All Oceans

*All information contained herein (including but not limited to any specifications, particulars, capacities, or capabilities) is believed to be correct, but is not guaranteed and is subject to change without notice.*