



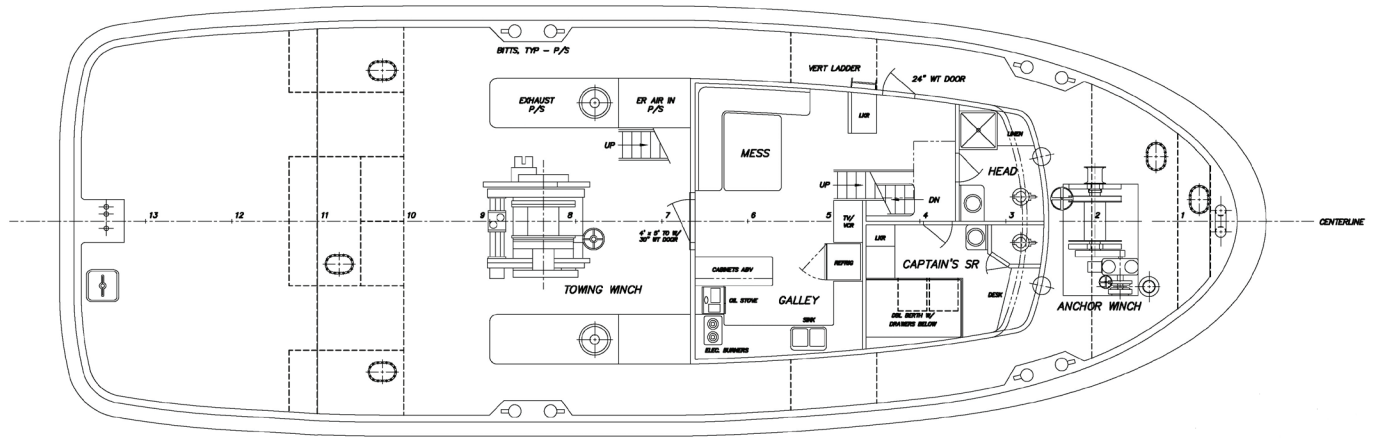
THS-08430

84' x 30' Z-Drive Tug

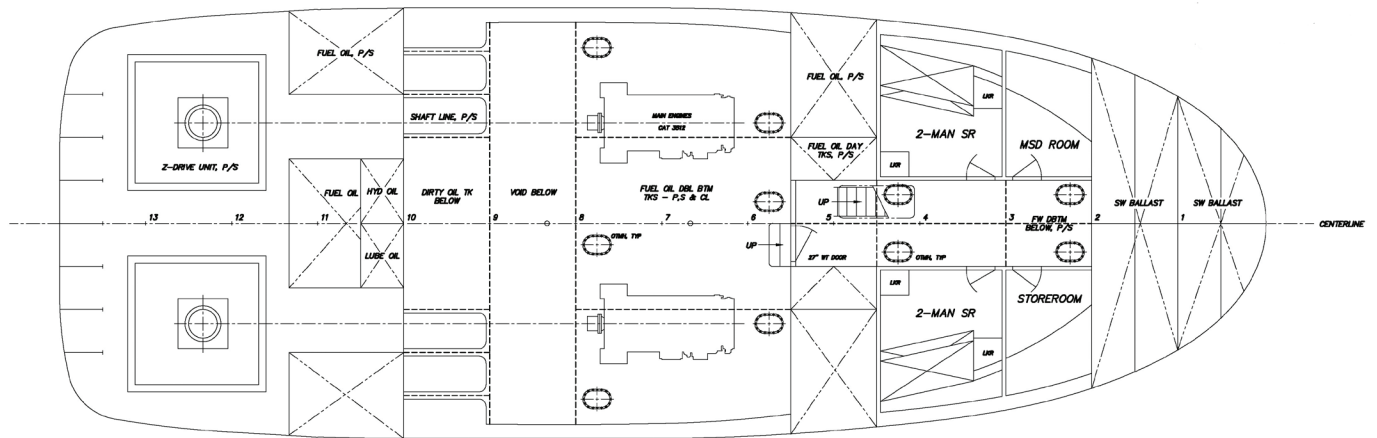
This design was developed to provide a maneuverable, powerful, yet smaller ship-assist tug to minimize some of the costs of building and operating a larger harbor tug. Equipped with Cummins main engines driving Ulstein Z-drives located stern, the vessel can operate as an assist tug for docking and handling barges and ships. The vessel is to be fitted with the same fendering as one would find on any other harbor tug.

Large machinery removal hatches are provided in the main deck and deck house top to allow removal of equipment from the engine room easily. Berths for 5 crew are installed in 3 comfortable staterooms, though the tug may be operated with a crew of two persons in certain operations.

An escort hawser winch is installed forward, and an H-bitt and hydraulic capstan are installed aft for towing. Other winch arrangements are possible. Full 360-degree visibility from the helm is assured with windows all around, and controls are located on consoles port and starboard of the centerline helm position.



MAIN DECK PLAN



BELOW DECK PLAN

Vessel Specifications

Overall Dimensions

Length, Overall	84'-0"	Main Engine	CAT 3512 x 2
Breadth	30'-0"		Rated 1280 BHP @ 1600 RPM Each
Depth	15'-3"	Z-Drive	2 x Ultstein
Draft (Full Load)	12'-0"		
Displacement (Full Load)	400	Fuel Oil	40,625 Gal
Design Speed	12 knots	Fresh Water	1,045 Gal
		SW Ballast	10,860 Gal

206.332.8090

crowley.com/vesseldesign
Seattle, WA • Jacksonville, FL

CROWLEY[®]
People Who Know[®]