

GENERAL ARRANGEMENT

NOT TO SCALE

SCHEDULE OF DRAWINGS	
DRAWING NO.	CONSTRUCTION DRAWINGS
ESC100	2023/24 WET SEASON ESCP - COVER SHEET
ESC101	2023/24 - NOTES
ESC102	2023/24 - WET SEASON WROKS (OCTOBER TO APRIL 2024)
ESC200	2023/24 - MARINE PIPELINE GENERAL ARRANGEMENT
ESC201	2023/34 - MARINE PIPELINE WET SEASON ESCP
ESC202	2023/34 - MARINE PIPELINE TRENCHING STANDARD CONTROLS
STANDARD DRAWINGS	
IECA STANDARD DRAWINGS - DRAINAGE CONTROLS	
ECM-01	EROSION CONTROL MATS
ES-1	EMERGENCY SPILLWAYS
TCC-01	TEMPORARY CULVERT CROSSING PART 1
TCC-02	TEMPORARY CULVERT CROSSING PART 2
RCD-01	CHECK DAMS
DB-01	FLOW DIVERSION BANKS
IECA STANDARD DRAWINGS - EROSION CONTROLS	
GRAVEL-01	GRAVELLING
R-01	REVEGETATION - GENERAL
IECA STANDARD DRAWINGS - SEDIMENT CONTROLS	
EXIT-01	CONSTRUCTION EXIT - ROCK PAD
MB-01	MULCH FILTER BERMS
SF-01	SEDIMENT FENCE
SF-02	SEDIMENT FENCE NOTES
RFD-03	ROCK FILTER DAM (INSTREAM)
IECA DEWATERING	
GFB-01	GRASS FILTER BEDS
FB-01	FILTER BAGS AND FILTER TUBES

WARNING

BEWARE OF UNDERGROUND SERVICES

The locations of underground services are approximate only and their exact position should be proven on site  
No guarantee is given that all existing services are shown

LEGEND

EXISTING FEATURES

- PROPERTY BOUNDARY
- SURFACE CONTOUR
- FENCE
- WATERMAIN/VALVE
- COMMS LINE/PIT
- OVERHEAD POWER LINES/POWER POLE
- EXISTING ROAD SIGN

PROPOSED WORKS

- DESIGN CENTRELINE
- FINISHED SURFACE CONTOUR
- BATTER

GENERIC INSTALLATION SEQUENCE

THE FOLLOWING TABLE INDICATES MINIMUM EROSION AND SEDIMENT CONTROL MEASURES FOR THE WORKS. SITE CONDITIONS, SUCH AS THE PRESENCE OF DISPERSIVE SOILS, MAY WARRANT HIGHER EROSION AND SEDIMENT CONTROL STANDARDS. MARK OUT INITIAL LIMITS OF DISTURBANCE AND IDENTIFY LOCATION OF DISPERSIVE SOIL (IF ANY). IF DISPERSIVE SOIL IS ENCOUNTERED, CONTACT THE ESCP DESIGNER PRIOR TO COMMENCING WORKS.

ITEM	INSTALLED	REMOVED
ENTRY/EXIT ROCK PAD	PRIOR OR IN CONJUNCTION WITH SITE CLEARING.	ONCE SITE IS STABILISED AND ALL TEMPORARY FACILITIES HAVE BEEN REMOVED.
DIVERSION CHANNELS/BERMS	PRIOR OR IN CONJUNCTION WITH SITE CLEARING.	ONCE SITE IS STABILISED AND ALL TEMPORARY FACILITIES HAVE BEEN REMOVED.
MULCH BERMS	IMMEDIATELY FOLLOWING CLEARING OF SITE AND MULCHING OF CLEARED VEGETATION	ONCE SITE IS STABILISED AND ALL TEMPORARY FACILITIES HAVE BEEN REMOVED.
SEDIMENT FENCE	PRIOR OR IN CONJUNCTION WITH SITE CLEARING.	ONCE SITE IS STABILISED AND ALL TEMPORARY FACILITIES HAVE BEEN REMOVED.
ROCK CHECK DAMS	INSTALLED WITHIN OPEN DRAINS IMMEDIATELY FOLLOWING EXCAVATION.	REMOVED ONCE DRAINS ARE DECOMMISSIONED OR ALTERNATIVE METHODS OF EROSION CONTROL ARE ESTABLISHED WITHIN THE DRAINS (E.G. GEOTEXTILE FABRIC OR GRASS ESTABLISHMENT)
ROCK FILTER DAMS	INSTALLED WITHIN OPEN DRAINS IMMEDIATELY FOLLOWING EXCAVATION.	ONCE SITE IS STABILISED AND ALL TEMPORARY FACILITIES HAVE BEEN REMOVED.
REVEGETATION	PROGRESSIVELY AS GROUND DISTURBANCE ACTIVITIES ARE COMPLETED.	N/A
STC HUMCEPTER	INSTALLED WITHIN OPEN DRAINS IMMEDIATELY FOLLOWING EXCAVATION.	N/A

STAGING OF WORKS

ITEM OF WORKS	TIMING SCHEDULE
SITE INFRASTRUCTURE INSTALLATION	OCT 2023 - TBC
REHABILITATION	PROGRESSIVE

EROSION RISK ASSESSMENT

CATCHMENT	AREA (ha)	R	K	LS	P	C	A (t/ha/month)	A (t/month)	CONTROL
(A) - LOT 1-7,12	0.38*	4496	0.027	0.19	1.3	0.4	12	5	TYPE 2
(B) -LOT 8-11, 13	0.38*	4496	0.027	0.19	1.3	0.4	12	5	TYPE 2
CARPARK	0.56	4496	0.027	0.19	1.3	0.4	12	7	TYPE 2
LAYDOWN	1.0	4496	0.027	0.24	1.3	0.3	11	11	TYPE 2
(C) -SITE ROAD - NORTH (W)	0.25	4496	0.027	0.31	1.3	0.80	39	10	TYPE 2
(D) - SITE ROAD - WEST	1.86	4496	0.027	0.31	1.3	0.10	5	9	TYPE 3
(E) -SITE ROAD - EAST	0.72	4496	0.027	0.41	1.3	0.10	6	5	TYPE 2
(F) -SITE ROAD - NORTH (E)	0.46	4496	0.027	0.41	1.3	0.32	12	5	TYPE 2

\* AREA OF INDIVIDUAL LOTS

ISSUED FOR CONSTRUCTION

GENERAL NOTES

- THIS IS A 'WET SEASON' ESCP. NOTE THAT IN THE TOP END OF THE NORTHERN TERRITORY, EARTHWORKS ARE CONSIDERED HIGHER RISK DURING THE WET SEASON MONTHS (OCTOBER TO APRIL OF EACH YEAR) AND GREATER CONTROLS ARE REQUIRED DURING THIS TIME.
- FOLLOWING THE 2023/24 WET SEASON (APRIL 2024), A REVISED EROSION AND SEDIMENT CONTROL PLAN (ESCP) SHALL BE SUBMITTED FOR APPROVAL TO DEPWS AND ADDITIONAL EROSION AND SEDIMENT CONTROL MEASURES SHALL BE IMPLEMENTED.
- ALL WORKS SHALL BE UNDERTAKEN IN ACCORDANCE WITH THE APPROVED ESCP AND ASSOCIATED DEVELOPMENT CONDITIONS.
- EROSION AND SEDIMENT CONTROL MEASURES SHALL CONFORM TO THE STANDARDS AND SPECIFICATIONS CONTAINED IN:
  - A.THE APPROVED ESCP AND SUPPORTING DOCUMENTATION; AND
  - B.THE LATEST VERSION OF INTERNATIONAL EROSION CONTROL ASSOCIATION (IECA) GUIDELINES, IF THE STANDARDS AND SPECIFICATIONS ARE NOT CONTAINED IN THE APPROVED ESCP.
- THE CONTRACTOR SHALL BE RESPONSIBLE FOR IMPLEMENTATION, MONITORING AND MANAGEMENT OF ALL EROSION AND SEDIMENT CONTROL MEASURES TO THE SATISFACTION OF DEPWS.
- THE CONTRACTOR SHALL TAKE ALL REASONABLE AND PRACTICABLE MEASURES TO CONTROL STORM WATER FLOW VELOCITIES, MINIMISE SOIL EROSION AND SEDIMENT RUNOFF, AND MITIGATE ENVIRONMENTAL HARM.
- UNEXPECTED CIRCUMSTANCES OR LARGE STORM EVENTS MAY NECESSITATE AMENDMENT OF THE ESCP. IN THE EVENT THAT SITE CONDITIONS CHANGE SIGNIFICANTLY FROM THOSE CONSIDERED WITHIN THE APPROVED ESCP, A REVISED EROSION AND SEDIMENT CONTROL PLAN (ESCP) SHALL BE SUBMITTED FOR APPROVAL TO DEPWS AND ADDITIONAL EROSION AND SEDIMENT CONTROL MEASURES SHALL BE IMPLEMENTED.
- WHERE THERE IS HIGH PROBABILITY OF ENVIRONMENTAL HARM OCCURRING DUE TO SEDIMENT LEAVING THE SITE, CONTRACTOR SHALL IMPLEMENT ALL REASONABLE AND PRACTICABLE MEASURES REQUIRED TO MITIGATE SUCH HARM, INCLUDING IMPLEMENTATION OF APPROPRIATE ADDITIONAL CONTROL MEASURES, WITH THE ESCP AMENDED AS SOON AS POSSIBLE AND RE-SUBMITTED FOR APPROVAL TO DEPWS.
- THE CONTRACTOR SHALL MAINTAIN SUFFICIENT EROSION AND SEDIMENT CONTROL MATERIALS ON SITE FOR SHORT NOTICE REPAIRS.
- THE CONTRACTOR SHALL MONITOR THE WORKS AREA WEEKLY, OR DAILY DURING RAINFALL, AND ADAPT ESC PRACTICES AS REQUIRED TO MAINTAIN THE REQUIRED PERFORMANCE STANDARD.

SITE	SEC 5720 HUNDRED OF BAGOT
ADDRESS	740 BERRIMAH ROAD EAST ARM, NT
DEVELOPMENT PERMIT	PA2021/0364
AREA OF WORKS	Approx. 9ha
CONSTRUCTION PERIOD	OCT 2023 - APR 2024 (SEE NOTE 2)
CONTRACTOR CONTACTS	
• SITE MANAGER	TODD DOW 0488 399 297
• SITE MANAGER	KIM BEARDSSELL 0427 542 434
• PROJECT MANAGER	LEIGH FITZPATRICK 0498 784 573
• ENVIRONMENTAL OFFICER	CHRISTIAN CLEARY 0419 549 676
• ESCP DESIGNER	ETHAN DILETTOSO 0474 296 911
	CPESC No. 00009816

--	--	--	--	--	--	--	--	--	--	--	--	--	--	--	--	--	--	--	--	--	--	--	--	--	--	--	--	--	--	--	--	--	--	--	--	--	--	--	--	--	--	--	--	--	--	--	--	--	--	--	--	--	--	--	--	--	--	--	--	--	--	--	--	--	--	--	--	--	--	--	--	--	--	--	--	--	--	--	--	--	--	--	--	--	--	--	--	--	--	--	--	--	--	--	--	--	--	--	--	--	--	--	--	--	--	--	--	--	--	--	--	--	--	--	--	--	--	--	--	--	--	--	--	--	--	--	--	--	--	--	--	--	--	--	--	--	--	--	--	--	--	--	--	--	--	--	--	--	--	--	--	--	--	--	--	--	--	--	--	--	--	--	--	--	--	--	--	--	--	--	--	--	--	--	--	--	--	--	--	--	--	--	--	--	--	--	--	--	--	--	--	--	--	--	--	--	--	--	--	--	--	--	--	--	--	--	--	--	--	--	--	--	--	--	--	--	--	--	--	--	--	--	--	--	--	--	--	--	--	--	--	--	--	--	--	--	--	--	--	--	--	--	--	--	--	--	--	--	--	--	--	--	--	--	--	--	--	--	--	--	--	--	--	--	--	--	--	--	--	--	--	--	--	--	--	--	--	--	--	--	--	--	--	--	--	--	--	--	--	--	--	--	--	--	--	--	--	--	--	--	--	--	--	--	--	--	--	--	--	--	--	--	--	--	--	--	--	--	--	--	--	--	--	--	--	--	--	--	--	--	--	--	--	--	--	--	--	--	--	--	--	--	--	--	--	--	--	--	--	--	--	--	--	--	--	--	--	--	--	--	--	--	--	--	--	--	--	--	--	--	--	--	--	--	--	--	--	--	--	--	--	--	--	--	--	--	--	--	--	--	--	--	--	--	--	--	--	--	--	--	--	--	--	--	--	--	--	--	--	--	--	--	--	--	--	--	--	--	--	--	--	--	--	--	--	--	--	--	--	--	--	--	--	--	--	--	--	--	--	--	--	--	--	--	--	--	--	--	--	--	--	--	--	--	--	--	--	--	--	--	--	--	--	--	--	--	--	--	--	--	--	--	--	--	--	--	--	--	--	--	--	--	--	--	--	--	--	--	--	--	--	--	--	--	--	--	--	--	--	--	--	--	--	--	--	--	--	--	--	--	--	--	--	--	--	--	--	--	--	--	--	--	--	--	--	--	--	--	--	--	--	--	--	--	--	--	--	--	--	--	--	--	--	--	--	--	--	--	--	--	--	--	--	--	--	--	--	--	--	--	--	--	--	--	--	--	--	--	--	--	--	--	--	--	--	--	--	--	--	--	--	--	--	--	--	--	--	--	--	--	--	--	--	--	--	--	--	--	--	--	--	--	--	--	--	--	--	--	--	--	--	--	--	--	--	--	--	--	--	--	--	--	--	--	--	--	--	--	--	--	--	--	--	--	--	--	--	--	--	--	--	--	--	--	--	--	--	--	--	--	--	--	--	--	--	--	--	--	--	--	--	--	--	--	--	--	--	--	--	--	--	--	--	--	--	--	--	--	--	--	--	--	--	--	--	--	--	--	--	--	--	--	--	--	--	--	--	--	--	--	--	--	--	--	--	--	--	--	--	--	--	--	--	--	--	--	--	--	--	--	--	--	--	--	--	--	--	--	--	--	--	--	--	--	--	--	--	--	--	--	--	--	--	--	--	--	--	--	--	--	--	--	--	--	--	--	--	--	--	--	--	--	--	--	--	--	--	--	--	--	--	--	--	--	--	--	--	--	--	--	--	--	--	--	--	--	--	--	--	--	--	--	--	--	--	--	--	--	--	--	--	--	--	--	--	--	--	--	--	--	--	--	--	--	--	--	--	--	--	--	--	--	--	--	--	--	--	--	--	--	--	--	--	--	--	--	--	--	--	--	--	--	--	--	--	--	--	--	--	--	--	--	--	--	--	--	--	--	--	--	--	--	--	--	--	--	--	--	--	--	--	--	--	--	--	--	--	--	--	--	--	--	--	--	--	--	--	--	--	--	--	--	--	--	--	--	--	--	--	--	--	--	--	--	--	--	--	--	--	--	--	--	--	--	--	--	--	--	--	--	--	--	--	--	--	--	--	--	--	--	--	--	--	--	--	--	--	--	--	--	--	--	--	--	--	--	--	--	--	--	--	--	--	--	--	--	--	--	--	--	--	--	--	--	--	--	--	--	--	--	--	--	--	--	--	--	--	--	--	--	--	--	--	--	--	--	--	--	--	--	--	--	--	--	--	--	--	--	--	--	--	--	--	--	--	--	--	--	--	--	--	--	--	--	--	--	--	--	--	--	--	--	--	--	--	--	--	--	--	--	--	--	--	--	--	--	--	--	--	--	--	--	--	--	--	--	--	--	--	--	--	--	--	--	--	--	--	--	--	--	--	--	--	--	--	--	--	--	--	--	--	--	--	--	--	--	--	--	--	--	--	--	--	--	--	--	--	--	--	--	--	--	--	--	--	--	--	--	--	--	--	--	--	--	--	--	--	--	--	--	--	--	--	--	--	--	--	--	--	--	--	--	--	--	--	--	--	--	--	--	--	--	--	--	--	--	--	--	--	--	--	--	--	--	--	--	--	--	--	--	--	--	--	--	--	--	--	--	--	--	--	--	--	--	--	--	--	--	--	--	--	--	--	--	--	--	--	--	--	--	--	--	--	--	--	--	--	--	--	--	--	--	--	--	--	--	--	--	--	--	--	--	--	--	--	--	--	--	--	--	--	--	--	--	--	--	--	--	--	--	--	--	--	--	--	--	--	--	--	--	--	--	--	--	--	--	--	--	--	--	--	--	--	--	--	--	--	--	--	--	--	--	--	--	--	--	--	--	--	--	--	--	--	--	--	--	--	--	--	--	--	--	--	--	--	--	--	--	--	--	--	--	--	--	--	--	--	--	--	--	--	--	--	--	--	--	--	--	--	--	--	--	--	--	--	--	--	--	--	--	--	--	--	--	--	--	--	--	--	--	--	--	--	--	--	--	--	--	--	--	--	--	--	--	--	--	--	--	--	--	--	--	--	--	--	--	--	--	--	--	--	--	--	--	--	--	--	--	--	--	--	--	--	--	--	--	--	--	--	--	--	--	--	--	--	--	--	--	--	--	--	--	--	--	--	--	--	--	--	--	--	--	--	--	--	--	--	--	--	--	--	--	--	--	--	--	--	--	--	--	--	--	--	--	--	--	--	--	--	--	--	--	--	--	--	--	--	--	--	--	--	--	--	--	--	--	--	--	--	--	--	--	--	--	--	--	--	--	--	--	--	--	--	--	--	--	--	--	--	--	--	--	--	--	--	--	--	--



1. CONSTRUCTION ACTIVITIES SHALL BE STAGED SO THAT LAND DISTURBANCE IS CONFINED TO AREAS OF MANAGEABLE SIZE AND THE EXTENT AND DURATION OF SOIL EXPOSURE IS LIMITED. EROSION AND SEDIMENT CONTROL MEASURES SHALL BE PROGRESSIVELY IMPLEMENTED TO SUIT.
2. ALL OFFICE AND OPERATIONAL ACTIVITIES SHALL BE LOCATED SUCH THAT ALL LIQUID EFFLUENT (E.G. WASH-DOWN WATER) IS TOTALLY CONTAINED AND TREATED WITHIN THE SITE.
3. ALL LIQUIDS AND CHEMICALS SHALL BE STORED AND HANDLED ON-SITE IN ACCORDANCE WITH RELEVANT STANDARDS, INCLUDING AS1940 – THE STORAGE AND HANDLING OF FLAMMABLE AND COMBUSTIBLE LIQUIDS.
4. SITE SPOILS SHALL BE LAWFULLY DISPOSED OF IN A MANNER THAT DOES NOT RESULT IN ONGOING SOIL EROSION OR ENVIRONMENTAL HARM.
5. EXCAVATION WORKS SHALL BE STAGED SO THAT THE DURATION OF EXPOSED OPEN TRENCHES IS LIMITED. TRENCHING SHALL ONLY BE OPENED UP WHERE IT IS INTENDED TO BE BACKFILLED IN THE SAME WORKING DAY.
6. NO LIQUID EFFLUENT IS PERMITTED TO BE DISPOSED OF ON SITE.
7. ACCESS TRACKS SHALL BE GRADED TO A CROWN OR WITH CROSSFALL DRAINAGE.
8. ACCESS TRACKS SHALL INCORPORATE STABILISED ENTRY/EXIT POINTS.
9. ACCESS TRACKS SHALL BE MONITORED FOR EXCESSIVE SEDIMENT TRACKING INTO ADJACENT PUBLIC ROADS. A REVIEW OF THE CONTROLS SHALL BE UNDERTAKEN BY THE CONTRACTOR AND ADDITIONAL MEASURES MAY BE EMPLOYED WHERE SEDIMENT BUILD-UP OCCURS ON PUBLIC ROADS AT VEHICLE EXIT POINTS.

1. MINIMISE DISTURBANCE TO ONLY THOSE AREAS REQUIRED FOR CONSTRUCTION. ALL OTHER AREAS SHALL BE FLAGGED AS "NO-GO ZONE"
2. ALL CLEARING SHALL BE CONDUCTED IN ACCORDANCE WITH FEDERAL, TERRITORY AND LOCAL GOVERNMENT ENVIRONMENTAL POLICIES.
3. BEFORE CLEARING COMMENCES, AREAS OF VEGETATION NOMINATED FOR PROTECTION SHALL BE CLEARLY IDENTIFIED AND MARKED ON SITE (BY FLAGGING OR FENCING) BY THE CONTRACTOR AND INSPECTED BY THE SUPERINTENDENT. CLEARING OF VEGETATION SHALL BE RESTRICTED TO THE NOMINATED AREAS. CONTRACTOR SHALL TAKE ALL REASONABLE AND PRACTICABLE MEASURES TO MITIGATE RISK OF UNNECESSARY LAND CLEARING AND PREVENT REMOVAL OR DISTURBANCE OF ALL VEGETATION AND GROUND COVERS (ORGANIC OR INORGANIC) INTENDED TO BE RETAINED.
4. WHERE CLEARING IS REQUIRED FOR THE PURPOSE OF INSTALLING EROSION AND SEDIMENT CONTROL MEASURES, EXTENTS OF CLEARING SHALL BE KEPT TO A MINIMUM.
5. DISTURBANCE OF THE NATURAL ENVIRONMENT SHALL BE LIMITED TO THE MINIMUM IN KEEPING WITH THE SITE CLEARING PLANS.
6. THE CONTRACTOR SHALL TAKE ALL PRACTICABLE AND REASONABLE MEASURES DURING CLEARING OPERATIONS TO PREVENT THE FORMATION OF FLOW PATHS THAT CAN CONCENTRATE SURFACE RUNOFF AND CREATE POTENTIAL FOR EROSION.

1. THE CONTRACTOR SHALL AVOID PLACEMENT OF STOCKPILES (WHERE PRACTICABLE) WITHIN 50m OF ANY DRAINS, DRAINAGE LINE OR OTHER WATERWAYS. SUITABLE TYPE 2/3 EROSION AND SEDIMENTATION CONTROLS TO BE IMPLEMENTED WHERE NOT PRACTICABLE.
2. THE FOLLOWING CONTROLS SHALL BE IMPLEMENTED FOR STOCKPILES OF ERODIBLE MATERIAL:
  - A. STOCKPILES SHALL BE LOCATED AT LEAST 2m FROM ANY RETAINED VEGETATION AND CONCENTRATED DRAINAGE LINES.
  - B. EARTH DIVERSION BUNDS SHALL BE INSTALLED IMMEDIATELY UP-SLOPE OF THE STOCKPILE, WHERE THE CONTRIBUTING CATCHMENT EXCEEDS 1500m<sup>2</sup> AND SHALL BE MANAGED TO AVOID CONCENTRATING FLOW CAUSING EROSION.
  - C. SEDIMENT CONTROL MEASURES SHALL BE INSTALLED DOWNSTREAM OF THE STOCKPILE (E.G. MULCH BERMS OR SEDIMENT FENCES).
  - D. TRENCH SPOIL AND BACKFILL MATERIAL SHALL GENERALLY BE STOCKPILED A MINIMUM OF 1.0m FROM OPEN TRENCHES.
3. STOCKPILE OF MATERIALS VULNERABLE TO SEDIMENTATION SHALL COVERED IF REQUIRED.
4. STRIPPED TOPSOIL SHALL BE STOCKPILED FOR REUSE. TOPSOIL STOCKPILE HEIGHTS SHALL BE 1.5m MAX. ALL OTHER STOCKPILE HEIGHTS SHALL BE 3.0m MAX WITH 1 IN 4 BATTERS MAX.
5. TOPSOIL STOCKPILES SHALL NOT BE COMPACTED OR WHEEL ROLLED.
6. LONG-TERM STOCKPILES (10 DAYS OR MORE) SHALL BE ADEQUATELY STABILISED (E.G. COVER, VEGETATION, SOIL BINDER, OR OTHER) AS DEEMED APPROPRIATE BY THE ESCP DESIGNER.
7. ALL DISTURBED AREAS OF STOCKPILES SHALL BE SUITABLY STABILISED AND REHABILITATED WITH GRASS OR OTHER COVER.

1. ALL DUST CONTROL MEASURES SHALL BE APPLIED AND MAINTAINED IN ACCORDANCE WITH APPROVED ESCP DRAWINGS.
2. THE CONTRACTOR SHALL BE RESPONSIBLE FOR THE EFFECTIVE CONTROL OF ALL DUST AND WINDBORNE MATERIAL EMANATING FROM THE SITE THROUGHOUT THE CONSTRUCTION PERIOD.
3. THE CONTRACTOR SHALL IMPLEMENT ALL MEASURES NECESSARY TO MINIMISE WIND EROSION AND PREVENT MATERIAL FROM THE SITE BEING BLOWN OVER OR ONTO PROPERTY OUTSIDE OF THE SITE. MEASURES SHALL INCLUDE BUT NOT BE LIMITED TO:
  - A. MINIMISING TRAFFIC MOVEMENTS ON DISTURBED SURFACES AND LIMITING VEHICLE SPEEDS TO 25KPH;
  - B. MAINTAINING EXPOSED SURFACES IN A MOIST CONDITION THROUGH FREQUENT WATERING;
  - C. PROGRAMMING WORKS TO MINIMISE THE LIFE OF SOIL STOCKPILES, OR TEMPORARILY STABILISING LONG TERM STOCKPILES.
4. DURING DRY PERIODS, UTILISE WATER TRUCK TO WATER DOWN WORKS SURFACES TO MINIMISE DUST GENERATION. DUST SUPPRESSION SHALL BE IMPLEMENTED BY SITE SUPERVISOR AS REQUIRED BY VISUAL INSPECTION.

1. ALL DRAINAGE CONTROL MEASURES SHALL BE APPLIED AND MAINTAINED IN ACCORDANCE WITH APPROVED ESCP DRAWINGS.
2. DURING THE CONSTRUCTION PHASE, ALL REASONABLE AND PRACTICABLE MEASURES SHALL BE IMPLEMENTED TO:
  - A. DIVERT CLEAN SURFACE WATERS AWAY FROM THE SITE IN A MANNER THAT MINIMISES EROSION OR CONTAMINATION OF WATER.
  - B. CONTROL FLOW VELOCITIES AND PREVENT SOIL EROSION ALONG DRAINAGE PATHS, INCLUDING ENTRY/EXIT POINTS; AND ENSURE ALL WATERS ARE DISCHARGED ONTO STABLE LAND, IN A NON-EROSIVE MANNER, AND AT A LEGAL POINT OF DISCHARGE.
  - C. MANAGEMENT OF DRAINAGE IS TO AVOID CONCENTRATION OF FLOW.
  - D. OPEN PROFILE TRAPEZOIDAL DRAINS INSTEAD OF "V" DRAINS ARE TO BE USED.

1. ALL EROSION CONTROL MEASURES SHALL BE APPLIED AND MAINTAINED IN ACCORDANCE WITH APPROVED ESCP DRAWINGS.
2. SYNTHETIC EROSION CONTROL TREATMENTS SHALL NOT BE USED IF SUCH MATERIALS ARE LIKELY TO CAUSE ENVIRONMENTAL HARM.

1. THE CONTRACTOR SHALL MITIGATE SEDIMENT RELATED ENVIRONMENTAL HARM AND/OR IMPACT TO STORMWATER INFRASTRUCTURE RESULTING FROM DEWATERING ACTIVITIES.
2. FLOW DIVERSION BARRIERS, OR OTHER APPROPRIATE SYSTEMS, SHALL BE USED TO MINIMISE THE QUANTITY OF WATER ENTERING EXCAVATIONS.
3. DEWATERING CONTROL MAY INCLUDE GEOFABRIC FILTERS AND NON-WOVEN FILTER FENCING.

1. ALL DISTURBED AREAS AND EARTHWORKS SHALL BE PROGRESSIVELY REHABILITATED WITH GRASS, OR OTHER COVER. REFER PROJECT DRAWINGS FOR LANDSCAPING DETAILS.
2. DUE TO WORKS BEING UNDERTAKEN DURING THE WET SEASON, GRASSING SHALL BE APPLIED VIA HYDROMULCHING.

1. TRENCHES SHALL BE EXCAVATED, LAID AND BACKFILLED WITHIN THE SAME DAY TO REDUCE EXPOSURE.
2. EXCAVATED TRENCH MATERIAL SHALL BE USED TO CREATE FLOW CONTROL BERMS ON THE UPSTREAM SIDE OF THE TRENCH.

1. HEIGHT OF ROCK FILTER DAM (H) TO BE 500mm IN ALL CASES.
2. WHERE RFD IS LOCATED IN DRAINAGE CHANNELS, THE CONTRACTOR SHALL EXTEND ROCK UP BATTERS TO FORM A 200mm SPILLWAY CHUTE (FREEBOARD FROM SHOULDER/TOP OF BATTER).
3. WHERE RFD IS LOCATED IN DRAINAGE CHANNELS, IT MAY BE REQUIRED TO SHIFT THEM UPSTREAM FROM THE END OF DRAIN TO ENSURE THE DRAIN HAS SUFFICIENT DEPTH FOR INSTALLATION OF CONTROLS WITH CONTROLLED OVERFLOW SPILLWAYS. WHERE IT IS NOT PRACTICABLE TO ACHIEVE A DRAIN HEIGHT OF 700mm, RFD HEIGHT (H) SHOULD BE REDUCED AND THE 200mm SPILLWAY DEPTH SHOULD BE MAINTAINED.

1. ALL SEDIMENT CONTROL MEASURES SHALL BE APPLIED AND MAINTAINED IN ACCORDANCE WITH APPROVED ESCP DRAWINGS.
2. ALL REASONABLE AND PRACTICABLE MEASURES SHALL BE TAKEN TO PREVENT, OR AT LEAST MINIMISE, THE RELEASE OF SEDIMENT FROM THE SITE. SEDIMENT CONTROL DEVICES SHALL BE INSTALLED TO TRAP SEDIMENT AS CLOSE TO THE SOURCE AS PRACTICABLE.
3. SEDIMENT CONTROL DEVICES SHALL NOT PRESENT A SAFETY HAZARD FOR SITE WORKERS AND/OR THE PUBLIC.
4. SEDIMENT FENCES SHALL BE INSTALLED ALONG THE DOWN SLOPE SIDE OF THE EARTHWORK ACTIVITIES AS PER IECA STANDARD DRAWINGS SF-01 AND SF-02. ENSURE RETURNS ARE PROVIDED.
5. SEDIMENT CONTROLS SHALL REMAIN IN PLACE UNTIL THE ACTIVITIES ARE FINISHED AND AREAS ARE STABILISED.
6. TRACKING OF SEDIMENTS ONTO ROADS EXTERNAL OF THE SITE IS NOT PERMITTED. ENTRY/EXIT TO SITE SHALL BE RESTRICTED TO DEFINED POINTS, WITH SUPPLEMENTARY ENTRY/EXIT SEDIMENT CONTROLS INSTALLED.
7. SEDIMENT CONTROL DEVICES SHALL BE DE-SILTED WHEN CAPACITY IS REDUCED BELOW 75%.
8. SEDIMENT CONTROLS SHALL BE INSPECTED WEEKLY DURING CONSTRUCTION AND IMMEDIATELY AFTER EACH RAINFALL EVENT.

1. THE INSTALLATION AND MAINTENANCE OF ALL EROSION AND SEDIMENT CONTROLS SHALL BE OVERSEEN BY A SUITABLY QUALIFIED PERSON (E.G. CERTIFIED PROFESSIONAL IN EROSION AND SEDIMENT CONTROL) TO ENSURE WORK PRACTICES ARE CONSISTENT WITH THE APPROVED ESCP.
2. THE CONTRACTOR SHALL ENSURE SUITABLE CONSTRUCTION ACCESS IS AVAILABLE FOR THE INSTALLATION AND ONGOING MONITORING AND MAINTENANCE OF SEDIMENT CONTROL DEVICES.
3. DRAINAGE CONTROLS SHALL BE MAINTAINED TO PREVENT BLOCKAGES AND UNCONTROLLED WATER DIVERSION/ FLOODING.
4. SEDIMENT CONTROLS, SHALL BE MAINTAINED TO ENSURE SEDIMENT RETENTION CAPACITY DOES NOT FALL BELOW 75%. ALL MATERIALS, WHETHER LIQUID OR SOLID, REMOVED FROM SEDIMENT CONTROL DEVICES AND PLACES OF SEDIMENT DEPOSITION, SHALL BE DISPOSED OF IN AN APPROVED MANNER THAT DOES NOT CAUSE FURTHER SOIL EROSION OR ENVIRONMENTAL HARM. MATERIALS SHALL BE DISPOSED OF IN A LOCATION THAT PREVENTS MATERIALS RE-ENTERING THE SYSTEM. WHERE PRACTICABLE, CAPTURED SEDIMENT SHALL BE MIXED INTO EARTHWORKS OPERATIONS.
5. IF ANY EROSION AND SEDIMENT CONTROLS ARE FOUND TO BE DAMAGED OR INEFFECTIVE, RESULTING IN EROSION OR SEDIMENT LOSS, THE CONTRACTOR SHALL MAKE GOOD AND CONSULT THE ESCP DESIGNER TO IDENTIFY NEEDS FOR ADDITIONAL REPAIRS, IMPROVEMENTS, SUBSTITUTES, OR ADDITIONAL CONTROL MEASURES.
6. ALL TEMPORARY EROSION AND SEDIMENT CONTROLS SHALL BE MAINTAINED FULLY OPERATIONAL UNTIL PERMANENT STABILISATION OF WORKS AREAS IS COMPLETED (MIN, 80% GRASS COVERAGE).
7. THE CONTRACTOR SHALL MAINTAIN SUFFICIENT SPARE MATERIALS (E.G. GEOFABRIC, SEDIMENT FENCE, MULCH, ROCK) TO ENABLE ANY REQUIRED REPAIRS IN TIMELY MANNER.

1. ALL EROSION AND SEDIMENT CONTROL MEASURES SHALL BE INSPECTED:
  - A. ROUTINE WEEKLY INSPECTIONS, WHEN WORKS ARE BEING UNDERTAKEN ONSITE;
  - B. MONTHLY DETAILED ADULTS;
  - C. DAILY, WHEN RAIN IS OCCURRING, AND WITHIN 18 HOURS FOLLOWING A RAINFALL EVENT OF SUFFICIENT INTENSITY AND DURATION TO CAUSE ON-SITE RUNOFF; AND
  - D. WITHIN 24 HOURS PRIOR TO EXPECTED RAINFALL.
2. ALL SEDIMENT DEPOSITED OFFSITE AS A DIRECT RESULT OF CONSTRUCTION ACTIVITIES SHALL BE REMOVED AND THE AREA APPROPRIATELY CLEANED / REHABILITATED AS SOON AS PRACTICABLE.
3. ANY FAILURE IN APPLIED DRAINAGE, EROSION AND SEDIMENT CONTROLS SHALL BE REPORTED TO THE CONSTRUCTION MANAGER AND SENIOR ENVIRONMENTAL ADVISOR WITHIN 24 HOURS OF THE INCIDENT OCCURRING.
4. ANY INCIDENT WHICH RESULTS IN UNAUTHORISED DISCHARGE OF SEDIMENT OR SEDIMENT LADEN WATER TO A WATERWAY, OR HAS POTENTIAL TO RESULT IN SERIOUS ENVIRONMENTAL HARM, SHALL BE REPORTED TO THE NT ENVIRONMENT PROTECTION AUTHORITY (NTEPA) WITHIN 24 HOURS VIA THE POLLUTION HOTLINE ON 1800 064 567.

**WARNING**  
**BEWARE OF UNDERGROUND SERVICES**  
 The locations of underground services are approximate only  
 and their exact position should be proven on site  
 No guarantee is given that all existing services are shown

[illegible]







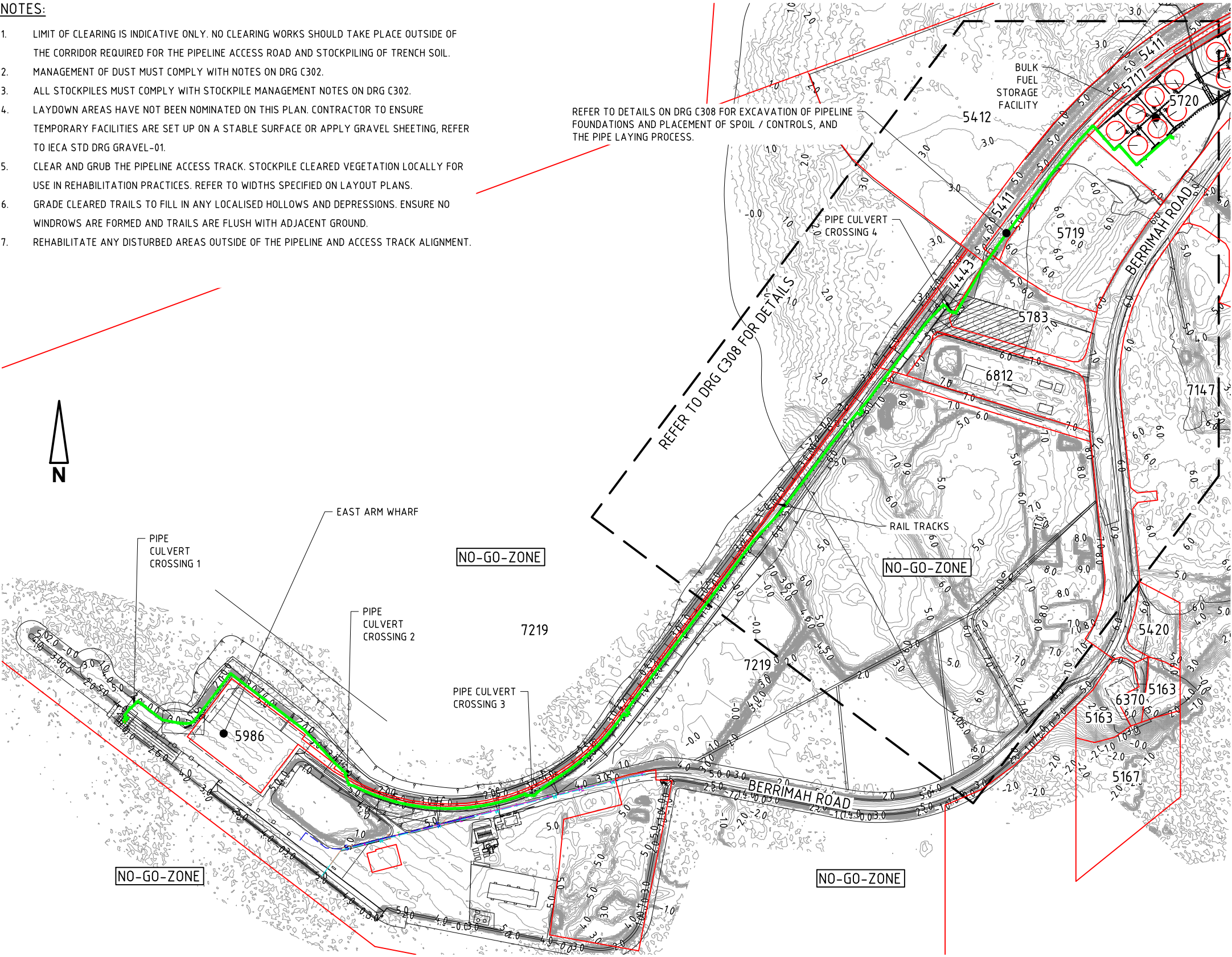
ISSUED FOR CONSTRUCTION

NOTES:

1. LIMIT OF CLEARING IS INDICATIVE ONLY. NO CLEARING WORKS SHOULD TAKE PLACE OUTSIDE OF THE CORRIDOR REQUIRED FOR THE PIPELINE ACCESS ROAD AND STOCKPILING OF TRENCH SOIL.
2. MANAGEMENT OF DUST MUST COMPLY WITH NOTES ON DRG C302.
3. ALL STOCKPILES MUST COMPLY WITH STOCKPILE MANAGEMENT NOTES ON DRG C302.
4. LAYDOWN AREAS HAVE NOT BEEN NOMINATED ON THIS PLAN. CONTRACTOR TO ENSURE TEMPORARY FACILITIES ARE SET UP ON A STABLE SURFACE OR APPLY GRAVEL SHEETING, REFER TO IECA STD DRG GRAVEL-01.
5. CLEAR AND GRUB THE PIPELINE ACCESS TRACK. STOCKPILE CLEARED VEGETATION LOCALLY FOR USE IN REHABILITATION PRACTICES. REFER TO WIDTHS SPECIFIED ON LAYOUT PLANS.
6. GRADE CLEARED TRAILS TO FILL IN ANY LOCALISED HOLLOWES AND DEPRESSIONS. ENSURE NO WINDROWS ARE FORMED AND TRAILS ARE FLUSH WITH ADJACENT GROUND.
7. REHABILITATE ANY DISTURBED AREAS OUTSIDE OF THE PIPELINE AND ACCESS TRACK ALIGNMENT.

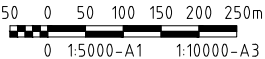
LEGEND

- PROPERTY BOUNDARY
- EXISTING CONTOURS (0.2m INTERVAL)
- FUEL PIPELINE ALIGNMENT



LAYOUT PLAN  
SCALE 1:5000 (m)

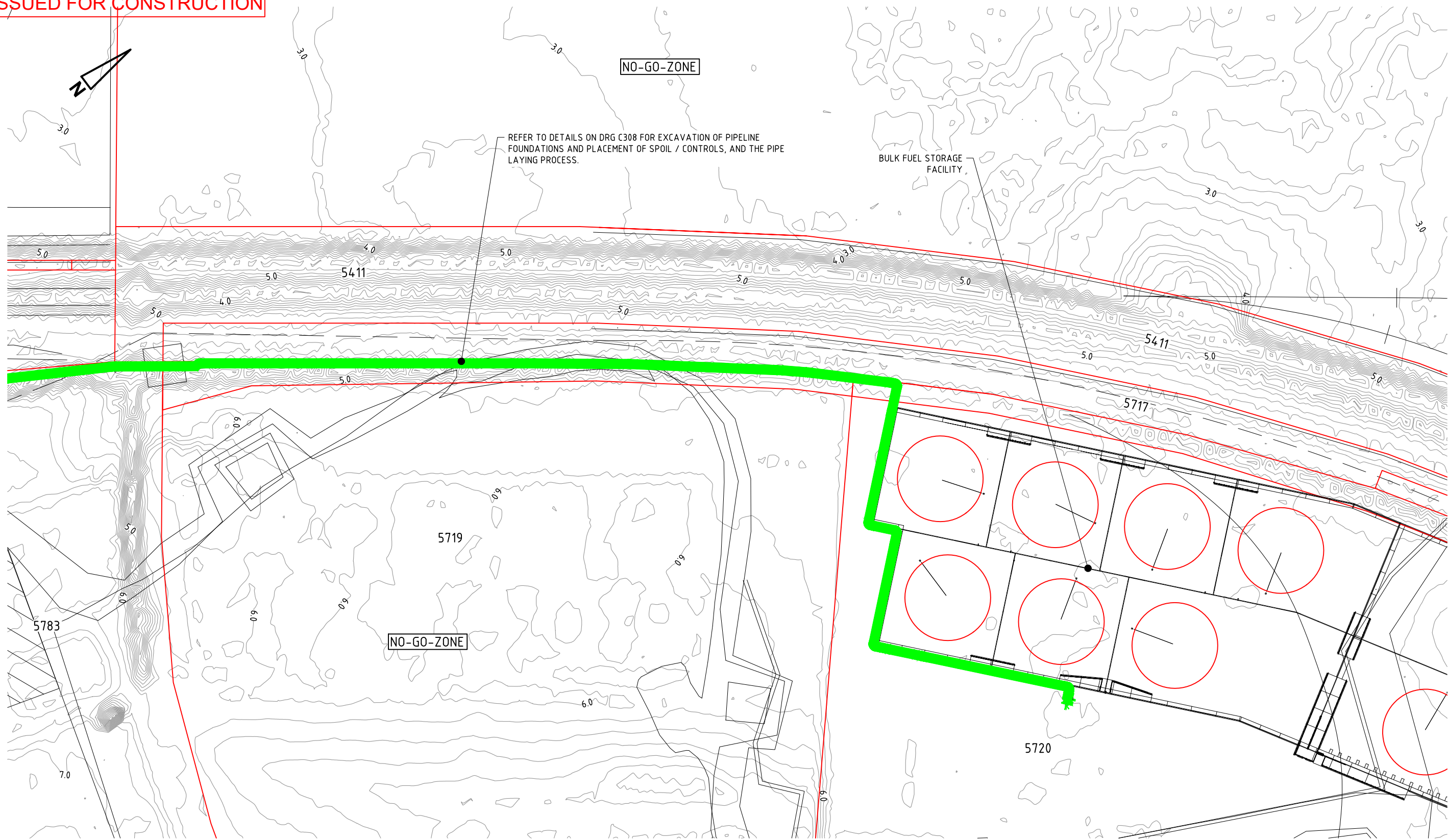
**WARNING**  
BEWARE OF UNDERGROUND SERVICES  
The locations of underground services are approximate only  
and their exact position should be proven on site  
No guarantee is given that all existing services are shown



				COPYRIGHT The concepts and information contained in this document are the copyright of BYRNE CONSULTANTS. Use or copying of the document in whole or in part without the written permission of BYRNE CONSULTANTS constitutes an infringement of copyright.		CLIENT  LATITUDE 63		byrne CONSULTANTS ABN 78 124 388 192 P.O.Box 43420 Casuarina NT 0811 Ph. 08 89472476 Fax: 08 89475098		APPROVED ED DRAWN JT DESIGNED PC		CHECKED JCM CHECKED ED		TITLE CAYMUS BULK FUEL STORAGE FACILITY 2023/24 WET SEASON ESCP MARINE PIPELINE GENERAL ARRANGEMENT			
0	14/09/23	JT	ISSUED FOR CONSTRUCTION											SCALE AS SHOWN	PROJECT No NT23046	DRAWING No ESC200	AMDT 0
No	DATE	INITIAL	AMENDMENT														

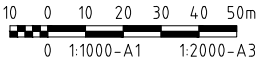


ISSUED FOR CONSTRUCTION



LAYOUT PLAN  
SCALE 1:1000 (m)

**WARNING**  
**BEWARE OF UNDERGROUND SERVICES**  
The locations of underground services are approximate only  
and their exact position should be proven on site  
No guarantee is given that all existing services are shown



0	14/09/23	JT	ISSUED FOR CONSTRUCTION
No	DATE	INITIAL	AMENDMENT

**COPYRIGHT**  
The concepts and information contained in this document are the copyright of  
BYRNE CONSULTANTS.  
Use or copying of the document in whole or in part  
without the written permission of  
BYRNE CONSULTANTS constitutes an infringement  
of copyright.

CLIENT

**LATITUDE 63**



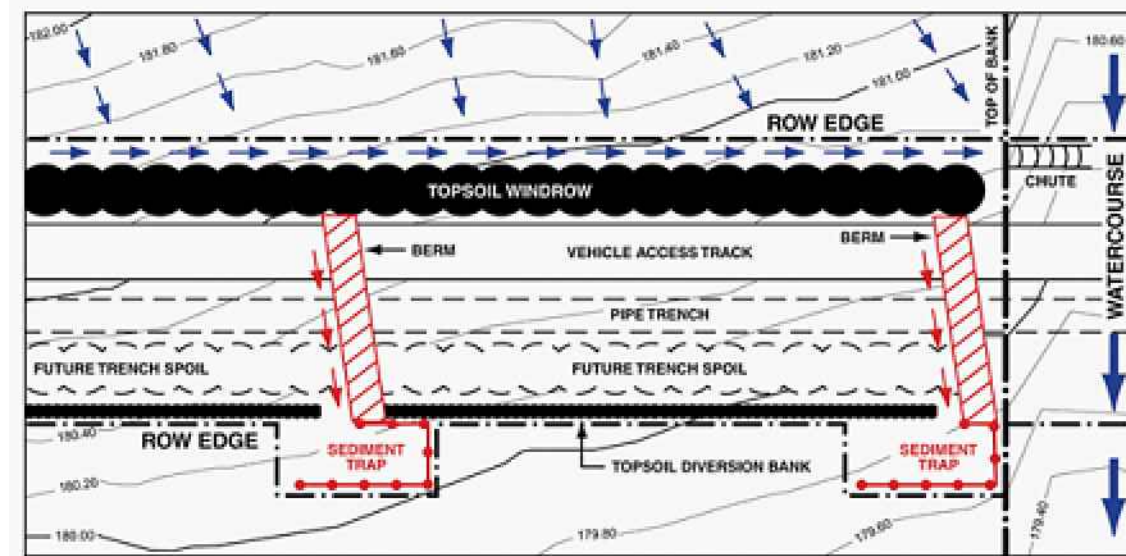
ABN 78 124 388 192  
P.O.Box 43420 Casuarina NT 0811  
Ph. 08 89472476 Fax: 08 89475098

APPROVED	
ED	
DRAWN	CHECKED
JT	JCM
DESIGNED	CHECKED
PC	ED

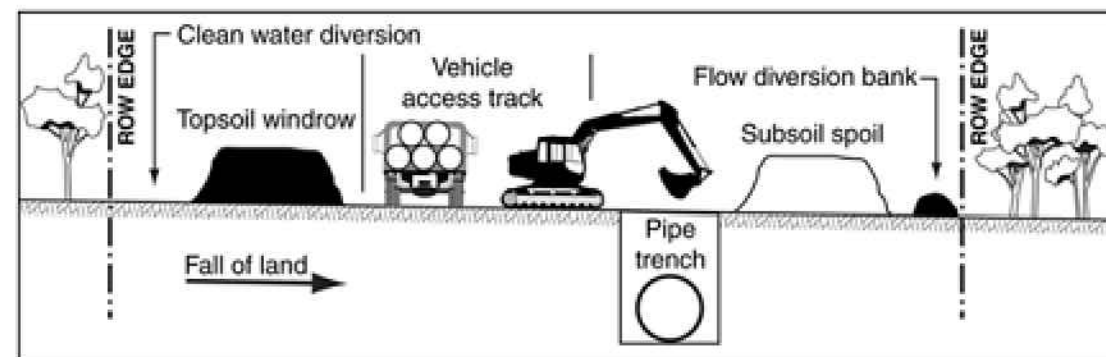
TITLE <b>CAYMUS BULK FUEL STORAGE FACILITY</b> <b>2023/24 WET SEASON ESCP</b> <b>MARINE PIPELINE WET SEASON ESCP</b>			
SCALE	PROJECT No	DRAWING No	AMDT
AS SHOWN	<b>NT23046</b>	<b>ESC201</b>	<b>0</b>



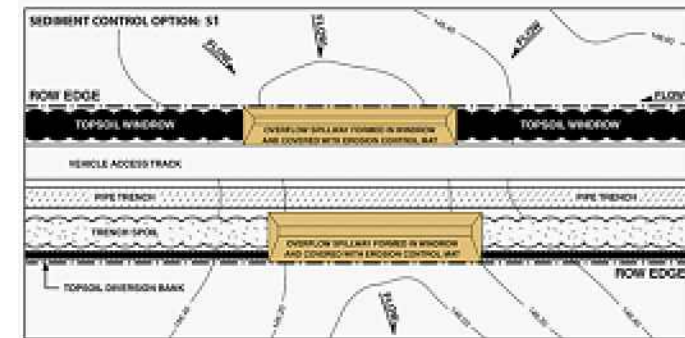
ISSUED FOR CONSTRUCTION



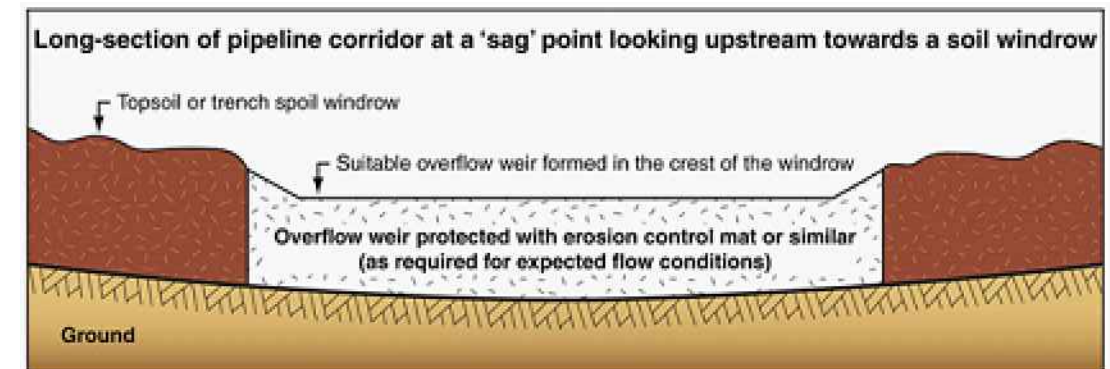
TYPICAL ROAD/SERVICE CORRIDOR ARRANGEMENT - PLAN VIEW  
REFER TO DIVERSION BANK DETAILS



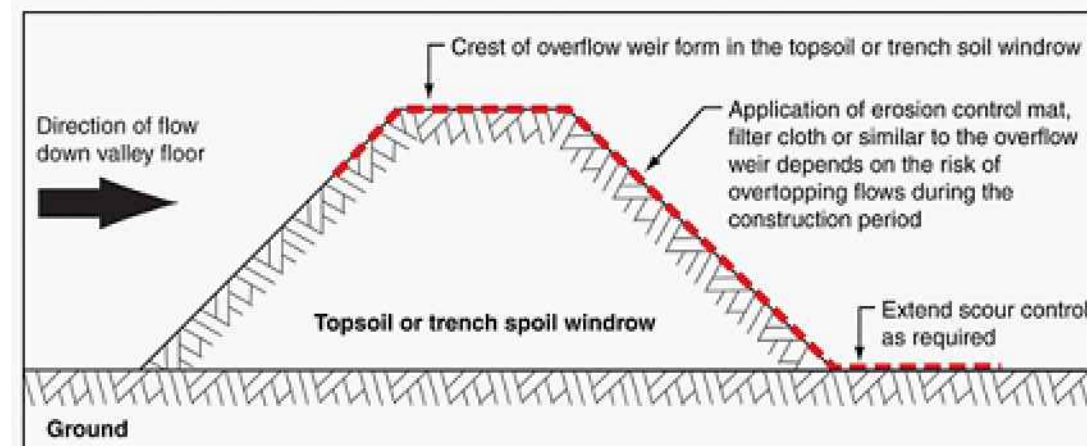
TYPICAL ROAD/SERVICE CORRIDOR ARRANGEMENT - SECTION VIEW  
PIPE IS ABOVEGROUND - EXCAVATION ONLY REQUIRED FOR PIPE RACK FOOTINGS / FOUNDATIONS



TYPICAL ROAD/SERVICE WATERWAY CROSSING - PLAN VIEW



LONG-SECTION OF TYPICAL OVERFLOW WEIR FORMED INTO SOIL WINDROW



CROSS-SECTION OF TYPICAL OVERFLOW WEIR FORMED INTO SOIL WINDROW

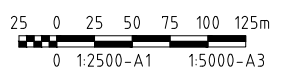
NOTE:

- NOTE:**
1. THE DETAILS PRESENTED IN THIS SHEET ARE EXTRACTS FROM IECA APPENDIX P – PIPELINES (2015). THEY PRESENT STANDARD ARRANGEMENTS FOR WATER MAIN AND/OR SERVICES INSTALLATION WORKS CONSIDERED LOW RISK AND TO BE COMPLETED DURING THE DRY SEASON
  2. VARIATION TO THE STANDARD ARRANGEMENT FOR DRAINAGE LINES AND WATERWAY CROSSINGS MAY BE ACCEPTED IF IN ACCORDANCE WITH ALTERNATIVE ARRANGEMENTS PRESENTED WITHIN APPENDIX P AND COMPLETION OF RISK ASSESSMENT BY CONTRACTOR.
  3. CROSSING OF DRAINAGE LINES AND WATERWAYS SHOULD OCCUR DURING PERIODS OF NO FLOW OR FORECAST RAINFALL. BASED ON RISK ASSESSMENT IN SUCH INSTANCES, INSTALLATION OF OVERFLOW SPILLWAY WITHIN DRAINAGE LINE MAY BE AVOIDED IF WORKS CAN BE COMPLETED, INCLUDING REINSTATEMENT OF DRAINAGE LINE CROSSING TO A NON-EROSIVE PROFILE PRIOR TO FLOW OCCURING.
  4. DISTURBANCE TO CROSSINGS SHOULD NOT OCCUR UNTIL IMMEDIATELY PRIOR TO TRENCHING. BACKFILL AND REINSTATEMENT OF DRAINAGE LINE CROSSINGS TO A NON-EROSIVE PROFILE SHOULD BE COMPLETED RAPIDLY FOLLOWING SERVICE INSTALLATION.
  5. PIPE TO BE ABOVEGROUND. EXCAVATION ONLY REQUIREMENT FOR PIPE RACK FOOTINGS/FOUNDATIONS.

**WARNING**

BEWARE OF UNDERGROUND SERVICES

**BEWARE OF UNDERGROUND SERVICES**  
The locations of underground services are approximate only  
and their exact position should be proven on site  
No guarantee is given that all existing services are shown



--	--	--	--	--	--	--	--	--	--	--	--	--	--	--	--	--	--	--	--	--	--	--	--	--	--	--	--	--	--	--	--	--	--	--	--	--	--	--	--	--	--	--	--	--	--	--	--	--	--	--	--	--	--	--	--	--	--	--	--	--	--	--	--	--	--	--	--	--	--	--	--	--	--	--	--	--	--	--	--	--	--	--	--	--	--	--	--	--	--	--	--	--	--	--	--	--	--	--	--	--	--	--	--	--	--	--	--	--	--	--	--	--	--	--	--	--	--	--	--	--	--	--	--	--	--	--	--	--	--	--	--	--	--	--	--	--	--	--	--	--	--	--	--	--	--	--	--	--	--	--	--	--	--	--	--	--	--	--	--	--	--	--	--	--	--	--	--	--	--	--	--	--	--	--	--	--	--	--	--	--	--	--	--	--	--	--	--	--	--	--	--	--	--	--	--	--	--	--	--	--	--	--	--	--	--	--	--	--	--	--	--	--	--	--	--	--	--	--	--	--	--	--	--	--	--	--	--	--	--	--	--	--	--	--	--	--	--	--	--	--	--	--	--	--	--	--	--	--	--	--	--	--	--	--	--	--	--	--	--	--	--	--	--	--	--	--	--	--	--	--	--	--	--	--	--	--	--	--	--	--	--	--	--	--	--	--	--	--	--	--	--	--	--	--	--	--	--	--	--	--	--	--	--	--	--	--	--	--	--	--	--	--	--	--	--	--	--	--	--	--	--	--	--	--	--	--	--	--	--	--	--	--	--	--	--	--	--	--	--	--	--	--	--	--	--	--	--	--	--	--	--	--	--	--	--	--	--	--	--	--	--	--	--	--	--	--	--	--	--	--	--	--	--	--	--	--	--	--	--	--	--	--	--	--	--	--	--	--	--	--	--	--	--	--	--	--	--	--	--	--	--	--	--	--	--	--	--	--	--	--	--	--	--	--	--	--	--	--	--	--	--	--	--	--	--	--	--	--	--	--	--	--	--	--	--	--	--	--	--	--	--	--	--	--	--	--	--	--	--	--	--	--	--	--	--	--	--	--	--	--	--	--	--	--	--	--	--	--	--	--	--	--	--	--	--	--	--	--	--	--	--	--	--	--	--	--	--	--	--	--	--	--	--	--	--	--	--	--	--	--	--	--	--	--	--	--	--	--	--	--	--	--	--	--	--	--	--	--	--	--	--	--	--	--	--	--	--	--	--	--	--	--	--	--	--	--	--	--	--	--	--	--	--	--	--	--	--	--	--	--	--	--	--	--	--	--	--	--	--	--	--	--	--	--	--	--	--	--	--	--	--	--	--	--	--	--	--	--	--	--	--	--	--	--	--	--	--	--	--	--	--	--	--	--	--	--	--	--	--	--	--	--	--	--	--	--	--	--	--	--	--	--	--	--	--	--	--	--	--	--	--	--	--	--	--	--	--	--	--	--	--	--	--	--	--	--	--	--	--	--	--	--	--	--	--	--	--	--	--	--	--	--	--	--	--	--	--	--	--	--	--	--	--	--	--	--	--	--	--	--	--	--	--	--	--	--	--	--	--	--	--	--	--	--	--	--	--	--	--	--	--	--	--	--	--	--	--	--	--	--	--	--	--	--	--	--	--	--	--	--	--	--	--	--	--	--	--	--	--	--	--	--	--	--	--	--	--	--	--	--	--	--	--	--	--	--	--	--	--	--	--	--	--	--	--	--	--	--	--	--	--	--	--	--	--	--	--	--	--	--	--	--	--	--	--	--	--	--	--	--	--	--	--	--	--	--	--	--	--	--	--	--	--	--	--	--	--	--	--	--	--	--	--	--	--	--	--	--	--	--	--	--	--	--	--	--	--	--	--	--	--	--	--	--	--	--	--	--	--	--	--	--	--	--	--	--	--	--	--	--	--	--	--	--	--	--	--	--	--	--	--	--	--	--	--	--	--	--	--	--	--	--	--	--	--	--	--	--	--	--	--	--	--	--	--	--	--	--	--	--	--	--	--	--	--	--	--	--	--	--	--	--	--	--	--	--	--	--	--	--	--	--	--	--	--	--	--	--	--	--	--	--	--	--	--	--	--	--	--	--	--	--	--	--	--	--	--	--	--	--	--	--	--	--	--	--	--	--	--	--	--	--	--	--	--	--	--	--	--	--	--	--	--	--	--	--	--	--	--	--	--	--	--	--	--	--	--	--	--	--	--	--	--	--	--	--	--	--	--	--	--	--	--	--	--	--	--	--	--	--	--	--	--	--	--	--	--	--	--	--	--	--	--	--	--	--	--	--	--	--	--	--	--	--	--	--	--	--	--	--	--	--	--	--	--	--	--	--	--	--	--	--	--	--	--	--	--	--	--	--	--	--	--	--	--	--	--	--	--	--	--	--	--	--	--	--	--	--	--	--	--	--	--	--	--	--	--	--	--	--	--	--	--	--	--	--	--	--	--	--	--	--	--	--	--	--	--	--	--	--	--	--	--	--	--	--	--	--	--	--	--	--	--	--	--	--	--	--	--	--	--	--	--	--	--	--	--	--	--	--	--	--	--	--	--	--	--	--	--	--	--	--	--	--	--	--	--	--	--	--	--	--	--	--	--	--	--	--	--	--	--	--	--	--	--	--	--	--	--	--	--	--	--	--	--	--	--	--	--	--	--	--	--	--	--	--	--	--	--	--	--	--	--	--	--	--	--	--	--	--	--	--	--	--	--	--	--	--	--	--	--	--	--	--	--	--	--	--	--	--	--	--	--	--	--	--	--	--	--	--	--	--	--	--	--	--	--	--	--	--	--	--	--	--	--	--	--	--	--	--	--	--	--	--	--	--	--	--	--	--	--	--	--	--	--	--	--	--	--	--	--	--	--	--	--	--	--	--	--	--	--	--	--	--	--	--	--	--	--	--	--	--	--	--	--	--	--	--	--	--	--	--	--	--	--	--	--	--	--	--	--	--	--	--	--	--	--	--	--	--	--	--	--	--	--	--	--	--	--	--	--	--	--	--	--	--	--	--	--	--	--	--	--	--	--	--	--	--	--	--	--	--	--	--	--	--	--	--	--	--	--	--	--	--	--	--	--	--	--	--	--	--	--	--	--	--	--	--	--	--	--	--	--	--	--	--	--	--	--	--	--	--	--	--	--	--	--	--	--	--	--	--	--	--	--	--	--	--	--	--	--	--	--	--	--	--	--	--	--	--	--	--	--	--	--	--	--	--	--	--	--	--	--	--	--	--	--	--	--	--	--	--	--	--	--	--	--	--	--	--	--	--	--	--	--	--	--	--	--	--	--	--	--	--	--	--	--	--	--	--	--	--	--	--	--	--	--	--	--	--	--	--	--	--	--	--	--	--	--	--	--	--	--	--	--	--	--	--	--	--	--	--	--	--	--	--	--	--	--	--	--	--	--	--	--	--	--	--	--	--	--	--	--	--	--	--	--	--	--	--	--	--	--	--	--	--	--	--	--	--	--	--	--	--	--	--	--	--	--	--	--	--	--	--	--	--	--	--	--	--	--	--	--	--	--	--	--	--	--	--	--	--	--	--	--	--	--	--	--	--	--	--	--	--	--	--	--	--	--	--	--	--	--	--	--	--	--	--	--	--	--	--	--	--	--	--	--	--	--	--	--	--	--	--	--	--	--	--	--	--	--	--	--	--	--	--	--	--	--	--	--	--	--	--	--	--	--	--	--	--	--	--	--	--	--	--	--	--	--	--	--	--	--