



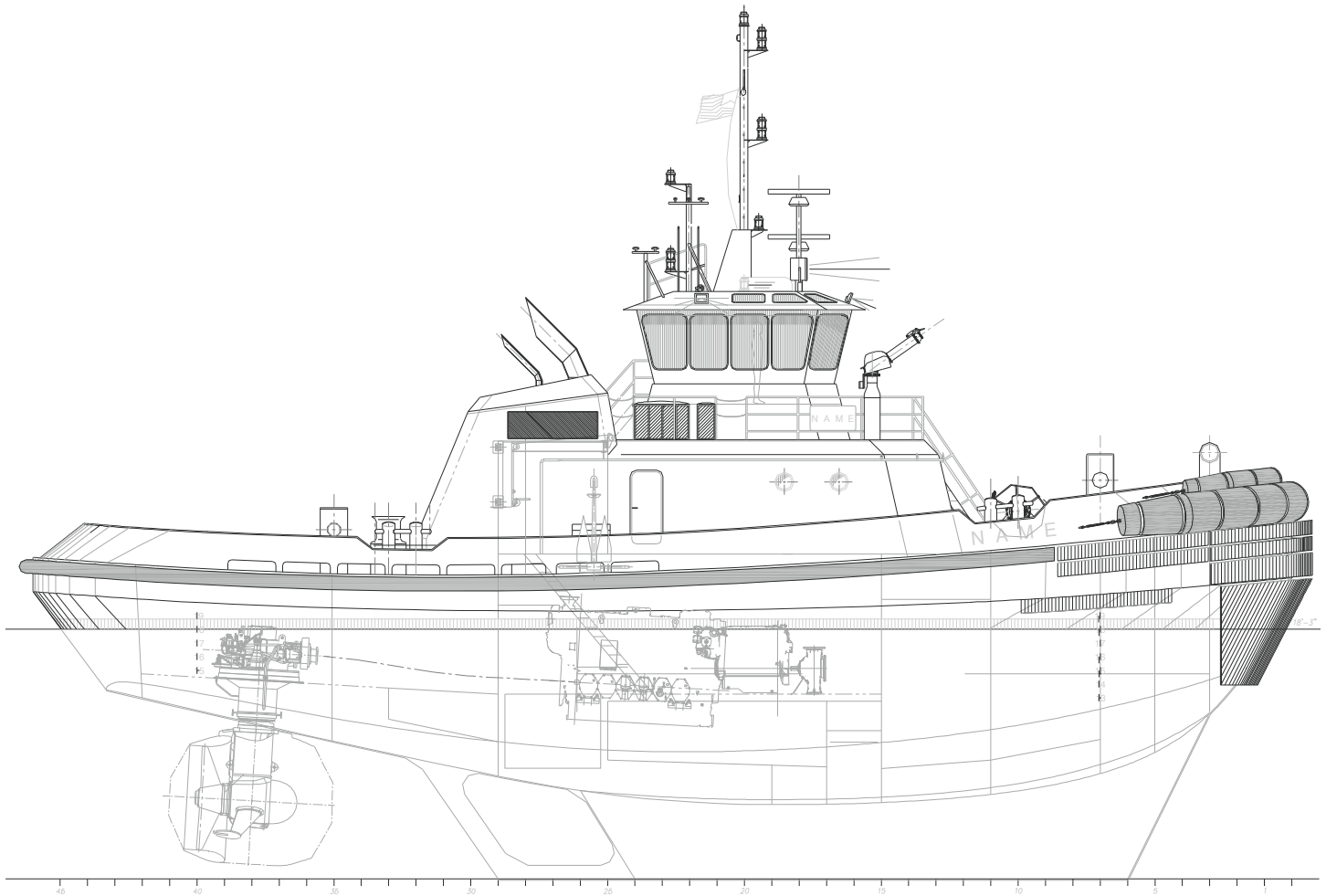
THS-09432

94' x 32' Z-Drive Tug

Jensen designed three “Z” class multi-purpose reverse tractor tugs for Tugz International LLC, an affiliate of The Great Lakes Group, and was built by Marco Shipyard.

Z-THREE, Z-FOUR and Z-FIVE have 4,000HP with a bollard pull in excess of 110,000 lbs. and operate at a design speed of 14 knots with a 3-man crew and are powered with twin CAT 3516TA's and Ulstein 1650H z-drives aft. The “Z-class” design was developed to accommodate an entire range of towing services, including ship handling, salvage, firefighting, oil recovery, tanker escort; and ocean and coastal towing of vessels and barges.

Tugs are classed ABS +A1 Towing Service (FiFi), AMS, Ice Class.



Vessel Specifications

Overall Dimensions

Length	94'-0" (28.7 m)	Fire Pump	1 x ITT/A-C Model 8100 3000 GPM
Breadth	32'-0" (9.8 m)	Fuel Capacity	33,632 gal (127,297 L)
Depth	14'-9" (4.5 m)	AFFF (Foam Capacity)	1,572 gal (5,590 L)
Draft Loadline	12'-11"	Fire Monitor	2 x Akron Brass Omega 1500 GPM each
Displacement Loadline	480 Long Tons	Maximum Speed	14 knots
Main Engines	2 x CAT 3516 2000 BHP @ 1600 RPM each	Cruising Speed	12 knots
Propulsion	2 x Ulstein 1650H Z-Drives		
Fire pump engine	1 x CAT 3406		

206.332.8090

crowley.com/vesseldesign

Seattle, WA • Jacksonville, FL

CROWLEY®
People Who Know®