



Name	Number	Year Built
Julie B	1201653	2007

400' x 130' x 25' • 121.91m x 39.62m x 7.62m

JULIE B

Specifications

Summer Load Line

Keel Draft 19' 0.8125" • 5.81m
 Displacement 28,551.7ST • 25,901.67MT
 Deadweight 23,636.9ST • 21,443.03MT

Lightship

Draft (mean) 3' 10" • 1.17m
 Displacement 4,914.79 ST • 4,458.62m
 LCG Forward of Transom 201.11' • 61.30m
 VCG Above Baseline 13.32' • 4.06m

Draft Mark Locations Forward of Transom

Fwd Marks 337.33' • 102.82m
 Aft Marks 60.83' • 18.54m

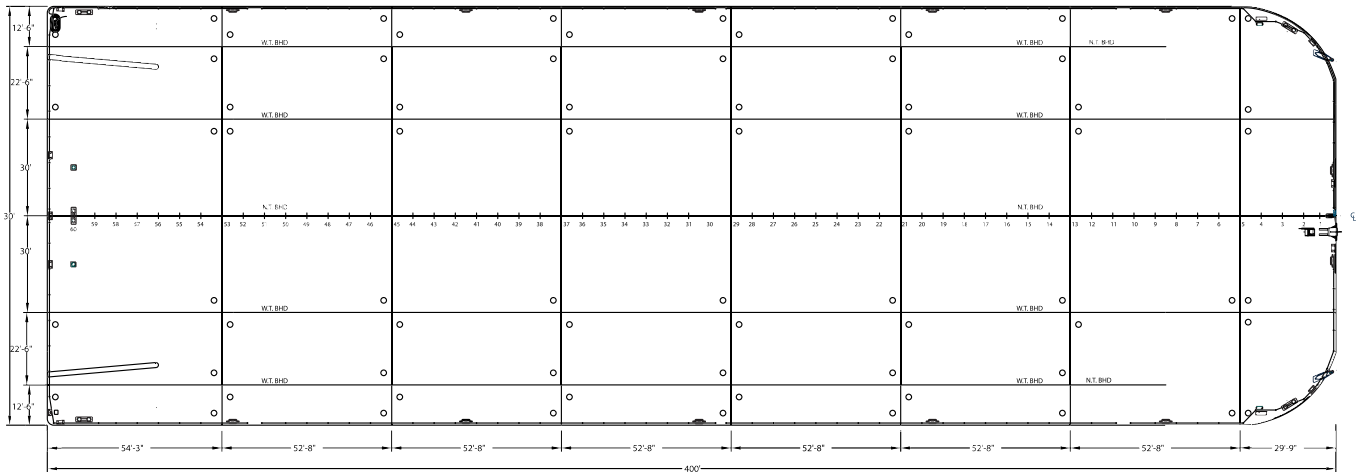
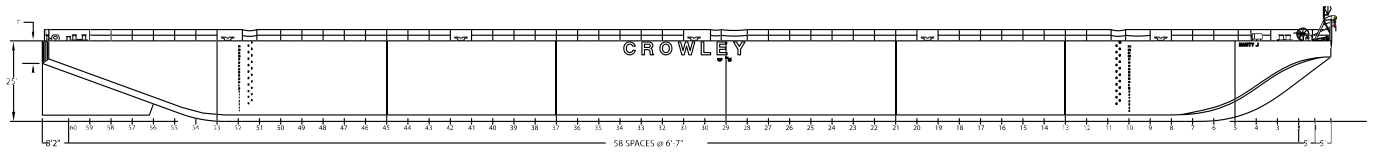
Longitudinal Strength Data

Maximum Allowable Still Water Bending Moments
 In Port 441,990LT-ft • 136,880MT-m
 At Sea 209,967LT-ft • 65,025MT-m

Maximum Allowable Still Water Shear Force

In Port 4,219LT • 4,286.70MT
 At Sea 2,368LT • 2,406MT

DWT (M/T)	DRAFT (M _{approx.})	DWT (S/T)	DRAFT (FEET)	DISPL (S/T,S.W.)	TPI
20865	5.0	23000	19	28000	122
19958		22000	18	27000	
19051	4.0	21000	17	26000	120
18144		20000	16	25000	
17237	3.0	19000	15	24000	118
16329		18000	14	23000	
15422	2.0	17000	13	22000	116
14515		16000	12	21000	
13608	1.0	15000	11	20000	114
12701		14000	10	19000	
11793	0	13000	9	18000	112
10886		12000	8	17000	
9979	0	11000	7	16000	110
9072		10000	6	15000	
8165	0	9000	5	14000	108
7257		8000	4	13000	
6350	0	7000	3	12000	106
5443		6000	2	11000	
4536	0	5000	1	10000	104
3629		4000	0	9000	
2722	0	3000	0	8000	102
1814		2000	-1	7000	
907	0	1000	-2	6000	100
0		0	-3	5000	
	1.0		3	4000	104



Julie B Allowable Loads

Transverse Frames

Uniform Linear Load - 42,308lbf/ft • 62.96MT/m
 Point Load - 198,998lbs • 90.26MT

Nominal Overall Deck Load Rating

4,200lbf/ft² • 20.51MT/m²

Transverse Bulkheads

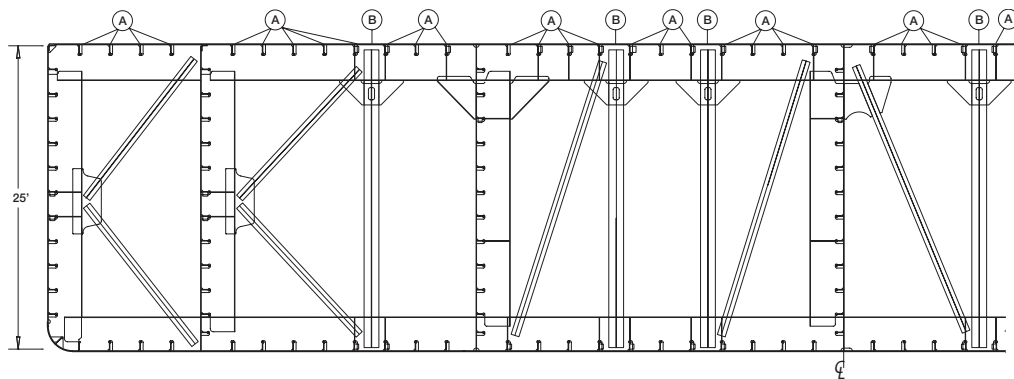
Uniform Linear Load - 82,094lbf/ft • 122.17MT/m
 Point Load - 547,293lbf • 248.25MT
 (only over web frames)

Intersection of Structures

Transverse Bulkhead and Longitudinal Bulkhead
 814.89Kips • 369.63MT
 Transverse Bulkhead and Side Shell
 772.97Kips • 350.61MT
 Transverse Frame and Side Shell
 599.60Kips • 271.97MT

Longitudinal Bulkheads

Uniform Linear Load - 74,722lbf/ft • 111.20MT/m
 Point Load - 515,205lbf • 233.69MT
 (only over web frames)



A - Longitudinal Stiffeners
 B - Frame Stanchions

**All information contained herein (including but not limited to any specifications, particulars, capacities, or capabilities) is believed to be correct, but is not guaranteed and is subject to change without notice.*