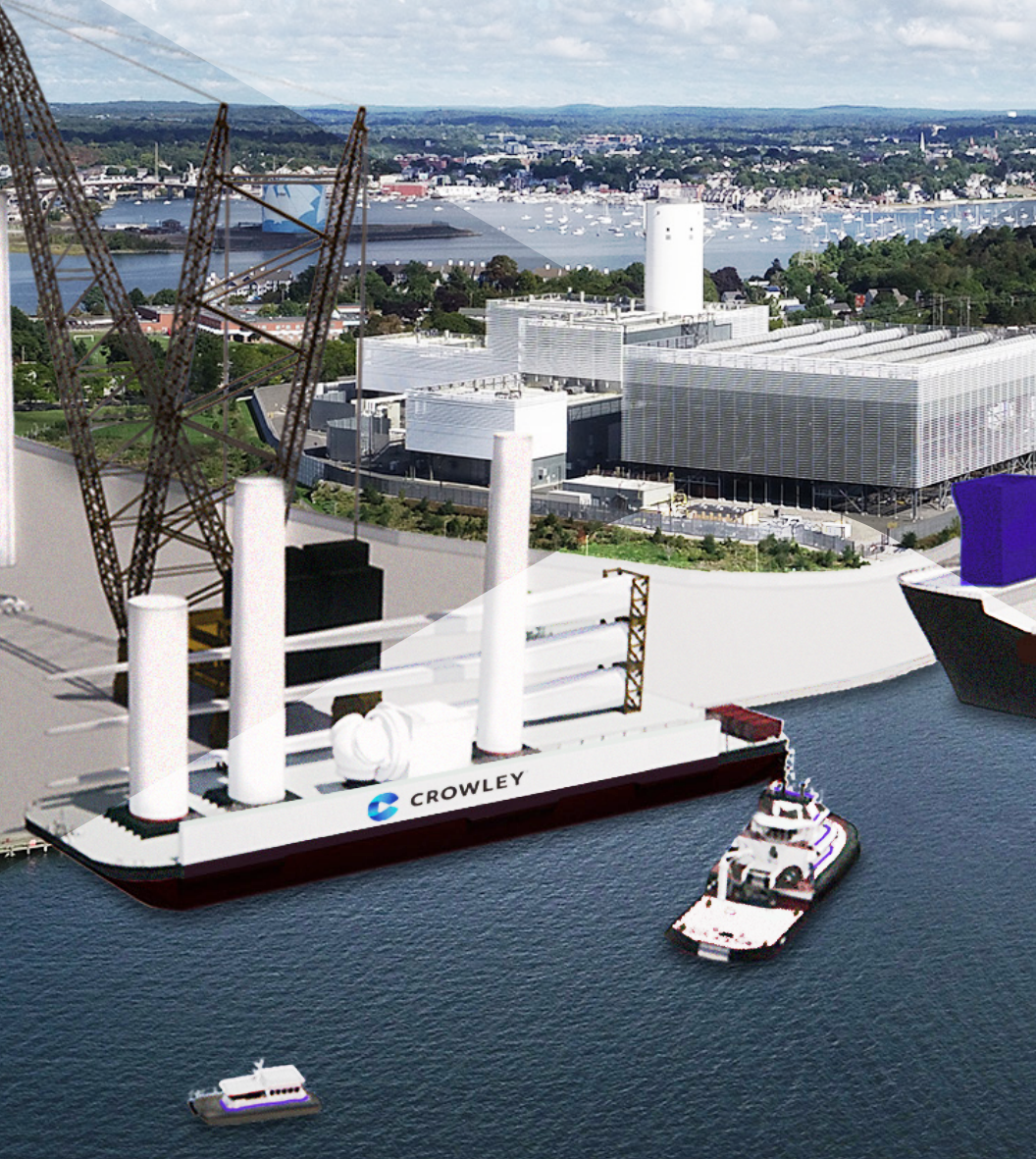




Salem Offshore Wind Terminal





LEGEND

- | | |
|-------------------|------------------------|
| 1 Laydown Yard | 5 Loading Area |
| 2 Transition Yard | 6 Existing Power Plant |
| 3 Inbound Berth | 7 Tower |
| 4 Outbound Berth | 8 Nacell |
| | 9 Blades |

Salem Wind Terminal: Harnessing Clean Energy

Crowley Wind Services and the City of Salem are partnering to develop and service marine and supply chain infrastructure for future port activities. We aim to create a cutting-edge wind services terminal, contributing to U.S. offshore wind development. Salem's strategic location supports offshore wind lease areas and the Gulf of Maine, making the modernized facility a vital asset within Crowley's multinational port facilities.

Through our Wind Services business unit, we will transform a 42-acre former coal power plant site in Salem's Designated Port Area. This site, located along Derby Street and Fort Avenue, will serve as a logistics hub for deploying offshore wind turbine components. Salem's Designated Port Area, recognized by the Commonwealth of Massachusetts, is a valuable resource for supporting maritime activities related to clean energy projects, including offshore lease areas where developers have exclusive rights to explore and construct offshore wind projects.

The renewal of this former coal plant aligns with Crowley's Sustainability commitment to decarbonization and achieving net-zero emissions across all scopes. By significantly diminishing reliance on traditional fossil fuel-based energy sources, the shift towards renewable offshore wind energy will contribute to a cleaner and more sustainable energy mix. This transition will effectively reduce greenhouse gas emissions, accelerating the progress towards a low-carbon future.

Who is Crowley

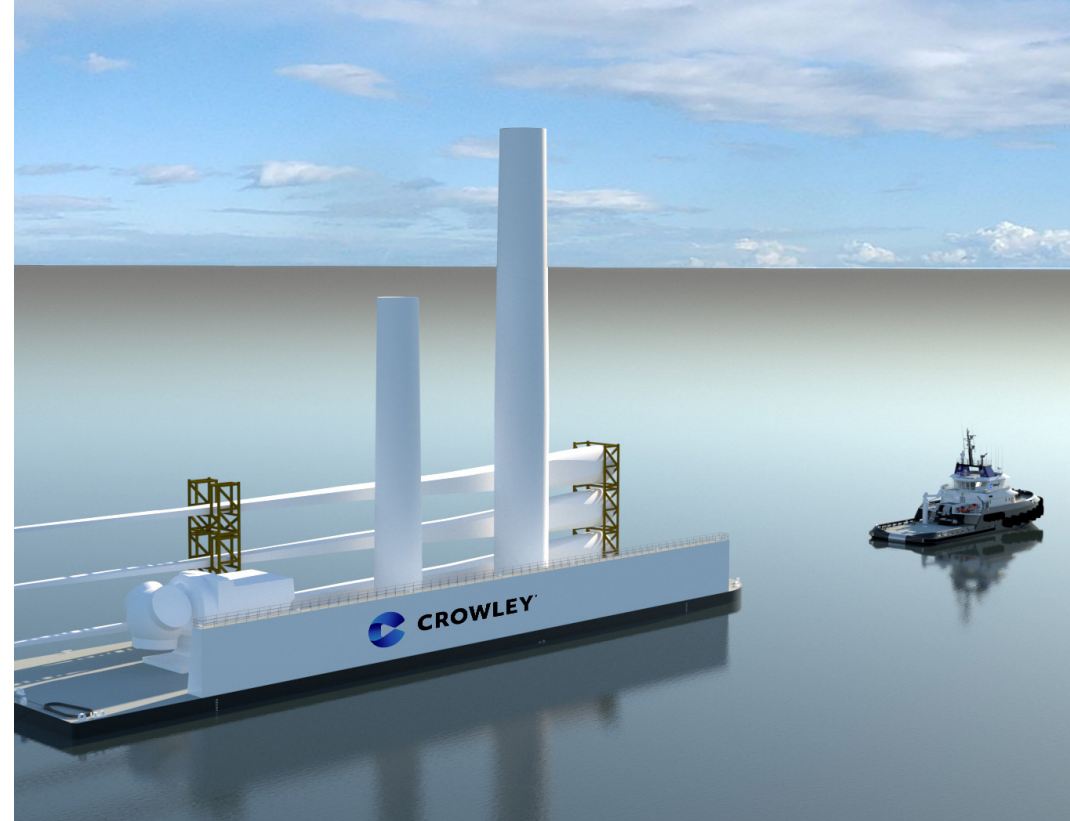
Crowley, established in 1892, is a U.S.-owned logistics, marine, and energy solutions company serving commercial and government sectors around the world. Through Crowley Wind Services, we leverage our land and sea assets, offshore operations expertise, third-party logistics capability, and workforce development and training initiatives to support and contribute to the development of the U.S. offshore wind industry.

The Site

The site is a 42-acre waterfront property in Salem Harbor's Designated Port Area. The site has a history dating back to the 1790s and has undergone various development and land reclamation projects. Previously, it housed a 750-megawatt coal and oil-fired power plant spanning 65 acres. The coal plant was demolished starting in 2014, followed by an environmental remediation effort. The original site has been divided into two lots: Lot 1, a 23-acre area where a new natural gas power plant has been developed by Footprint Power, and Lot 2, which consists of the remaining 42 acres and will be transformed into the Salem Offshore Wind Terminal.

Project Outline

The proposed development will result in a terminal providing new heavy-lift deployment and logistics services for offshore wind operations south of Nantucket into the Northeast.



“We are truly pleased to partner with the Salem community and the Commonwealth of Massachusetts to **support the development of the renewable and sustainable energy sector by building one of New England’s first modern port facilities that can accommodate the vessels, components and staging needs of offshore wind infrastructure.** We look forward to a long relationship with Salem and Massachusetts and the people and businesses there,” said John Berry, director, port operations, Crowley Wind Services.

Crowley is embarking on a long-term partnership with the City of Salem. Together, with ongoing support from the Commonwealth and federal partners, we are supporting the region's energy goals while delivering benefits to the community:



During the construction phase, the site will employ a staff of approximately 70 people. Once operations begin, the facility will support up to approximately 150 jobs.



The city's historic port at a former coal energy site is set to undergo transformative improvements, fueled by sustainability-focused investments including improving stormwater management to protect water quality in Salem Harbor.



Investments in maritime and logistics supporting renewable energy furthers the Commonwealth of Massachusetts' clean energy and climate goals to address climate change impacts and pollution from traditional fossil fuel energy sources.



Salem Wind Terminal will include in a community benefits agreement to support the long-term interests of the city and its residents. This includes identifying local supply chain opportunities, fostering workforce development, enhancing public waterfront access for future cruise ship visits, and fostering partnerships with residents and community organizations in traditionally underserved groups.



With the terminal's support of offshore wind energy, greenhouse gas emissions from fossil fuel energy sources will be reduced, helping decarbonize power supplies to address impacts of climate change.



Proposed enhanced landscaping along ferry terminal parking lot. (View looking south east along edge of parking lot)



Conceptual rendering: Proposed limited access waiting and load area for future cruise ships. (Note: Cruise ship berthing facilities are not included in this offshore wind terminal project.)



Enhanced landscaping and buffers along Derby Street. (View looking east along Derby Street)

To learn more about this project, please visit
our website at: salemoffshorewind.com or
email us at info@salemoffshorewind.com



CROWLEY®