

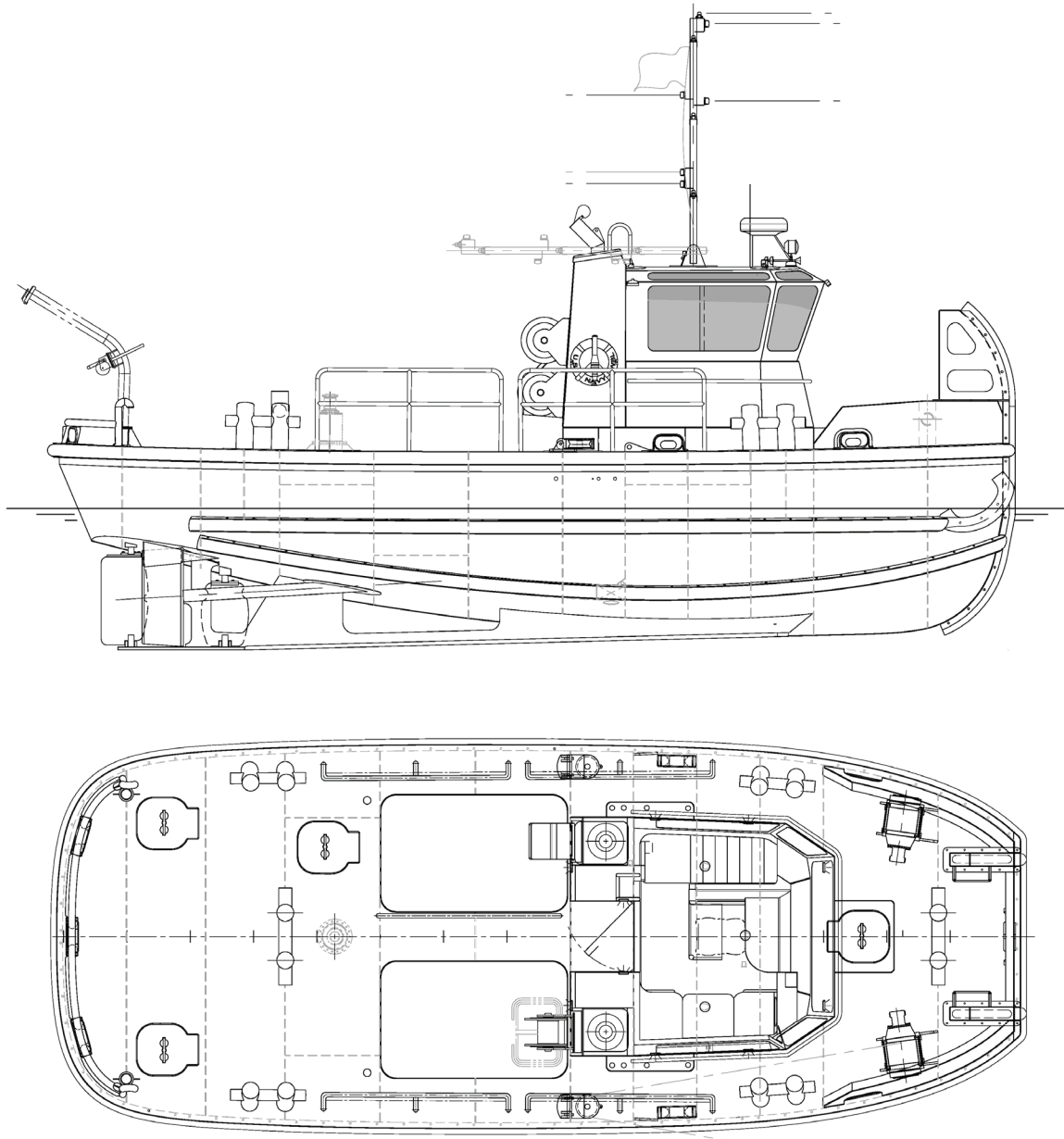


TWB-04116

41' x 16' Workboat Large

The mission of the CNIC Work Boat Large is to provide Naval shore installations with capability to meet various port operations and barrier tending requirements. This includes the ability to safely assist barges, submarines, and other naval vessels, open and close security barriers, and to tow/push floating port operations support equipment.

Crowley's engineering services team delivers a full range of marine and engineering solutions. This includes detail and conceptual design, shipyard management, and on-site consulting services for all types of marine projects anywhere in the world. Our vessel design and marine engineering services are both extraordinary and cost effective. No matter the size and scope of your marine project, our professionals will help you achieve your objectives in the safest and most efficient manner possible.



Vessel Specifications

Overall Dimensions

Length	41'-0" (12.5 m)	Horsepower	2 x 448
Breadth	15'-7" (4.8 m)	Fuel Capacity	1,220 gal (4.6 m ³)
Depth	7'-4" (2.2 m)	Cargo Capacity	2000 lbs (907 kg)
Draft	6'-0" (1.8 m)	Crew Capacity	5
Propulsion	Twin Screw Diesel	Gross Tonnage	None (public vessel)

206.332.8090

crowley.com/vesseldesign

Seattle, WA • Jacksonville, FL

CROWLEY®
People Who Know®