



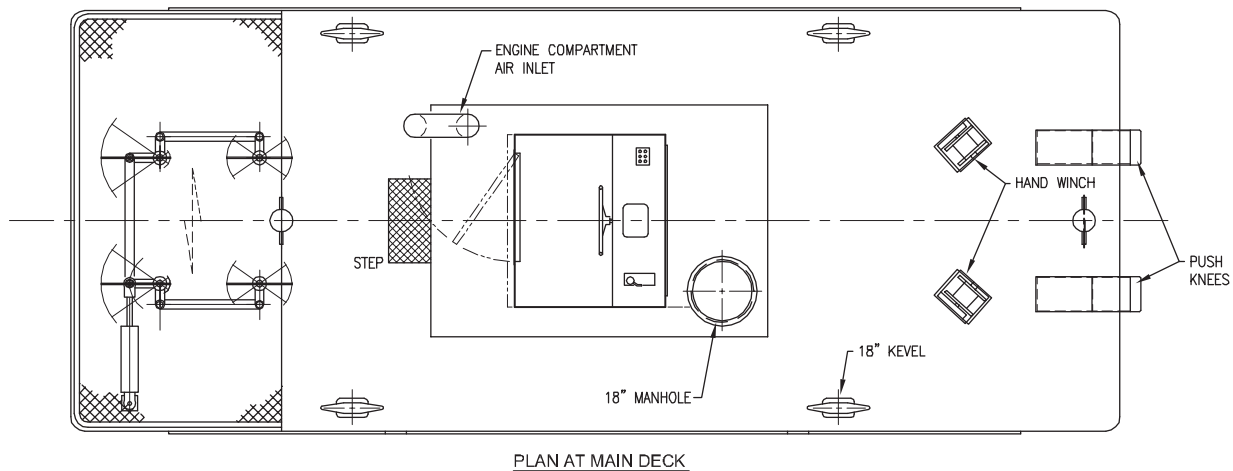
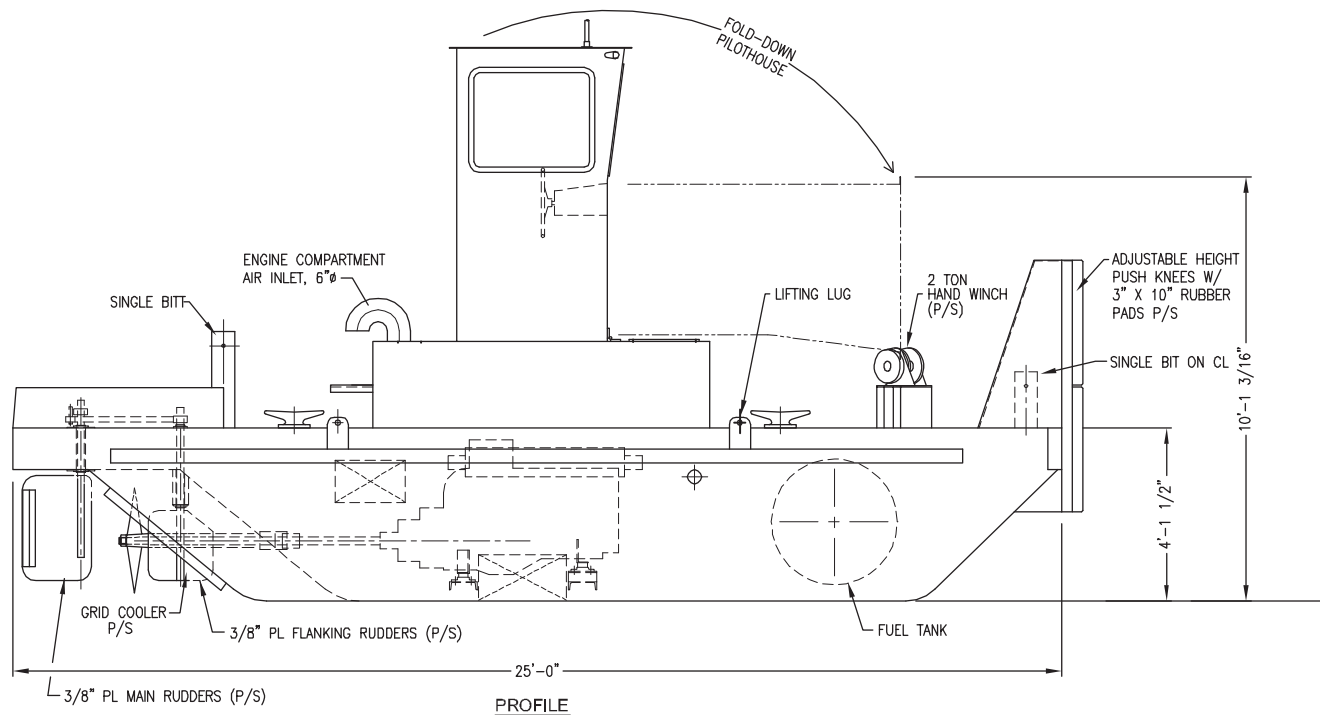
TWB-02510

25' Truckable Workboat

The Truckable Workboat is designed for over-the-road transportation, with a maximum breadth of 10-ft over the guards. The deckhouse folds forward to minimize height during transport, with a height of less than 11-ft from keel to top of the fixed push knees. The Workboat is fitted with push knees forward, as well as a pair of wire winches to secure to a float or barge. A single diesel provides propulsion power to a fixed pitch propeller. Flanking rudders provide excellent maneuverability. Twin diesel propulsion is available in a version that is 13-ft over the guards.

The Truckable workboat vessel is used by the Ohio Department of Natural Resources (ODNR), Division of Parks and Recreation. The workboat meets all applicable OSHA regulations and all applicable Federal and State regulations.

Crowley's engineering services team delivers a full range of marine and engineering solutions. This includes detail and conceptual design, shipyard management, and on-site consulting services for all types of marine projects anywhere in the world. Our vessel design and marine engineering services are both extraordinary and cost effective. No matter the size and scope of your marine project, our professionals will help you achieve your objectives in the safest and most efficient manner possible.



Vessel Specifications

Overall Dimensions

| | | | |
|---------|----------------|-----------------|--------------------|
| Length | 25'-9" (7.8 m) | Fuel Oil | 300 gal |
| Breadth | 10'-0" (3 m) | Main Propulsion | John Deere 6068TFM |
| Depth | 4'-6" (1.4 m) | | 178 hp at 2500 rpm |

206.332.8090

crowley.com/vesseldesign

Seattle, WA • Jacksonville, FL

CROWLEY®
People Who Know®