



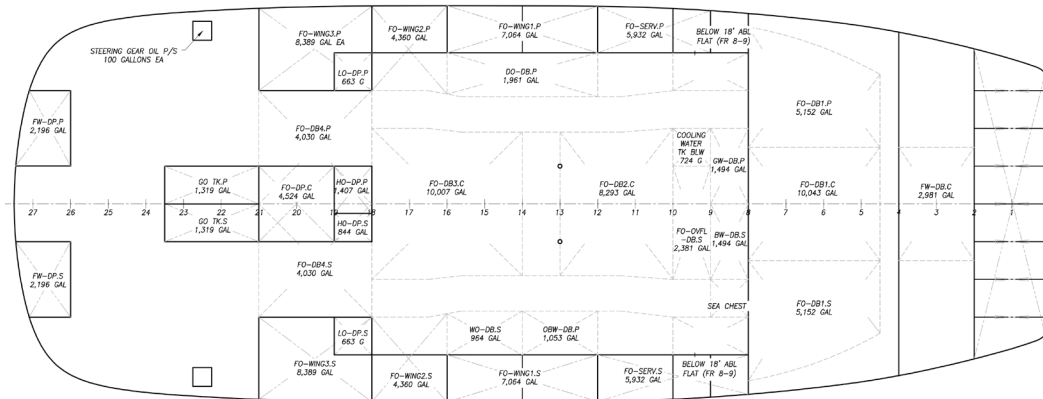
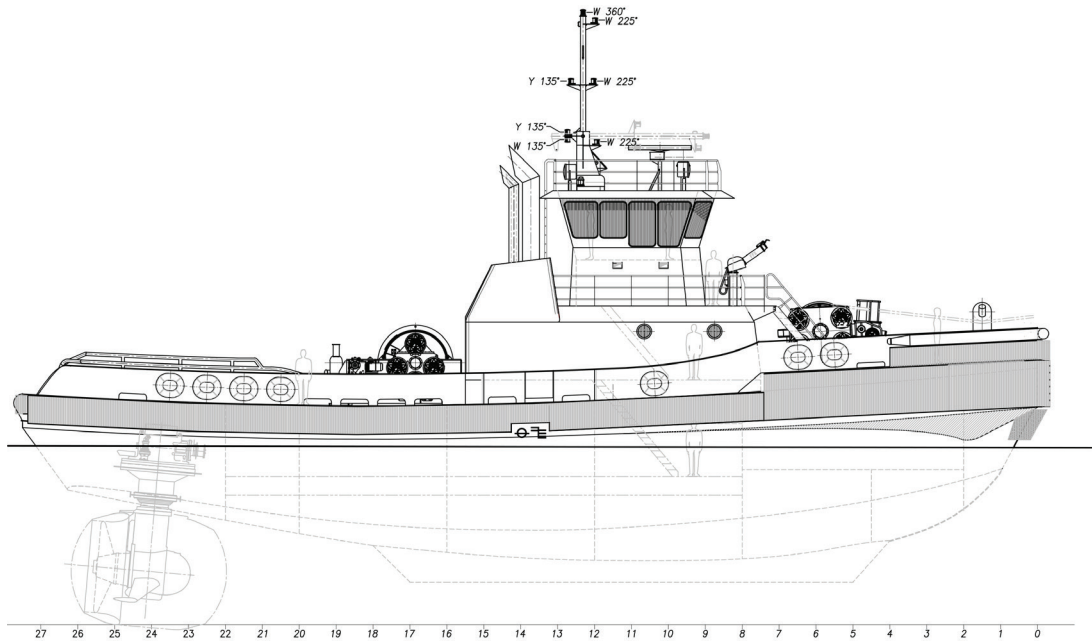
TES-11244

112' x 44' Escort Tug

The 112-foot by 44-foot tug has a 22-foot draft, was built for escort, ocean towing and ship assist, and has firefighting capabilities if needed. The tug features a raised pilot house and a squared forward end. The large, flat bow allows the tug to come up flat against the transom of ocean-going ships in the Columbia River. The tug is equipped with two wire winches forward, and six aft, for hard wiring to the stern of large ships for escort. It has an enhanced fuel capacity of 108,000 gallons for offshore and rescue tows and accommodations for up to 10 crewmembers.

She is outfitted with a pair of GE 12V250 U.S. EPA Tier IV, medium-speed diesel main engines; a pair of Rolls Royce 305, four-bladed z-Drives; a pair of EPA Tier III, John Deere 6090A generators; and one Caterpillar C32 fire pump power plant. The engines are rated at 4,218 HP each, and will provide enough power to develop an estimated 230,000 pounds of bollard pull.

Her deck machinery consists of the previously listed eight deck winches, all of which are Wintech 120-ton (SWL) winches; one Rapp HA-149H-250 escort winch; and a Rapp double drum AHTW-75H-165 tow winch. The fire pump and the two fire monitors are provided by Fire Fighting Systems U.S. agent, Inmar Systems. The firefighting system has the capability to pump more than 12,000 gallons per minute to fight marine and near shore fires.



Vessel Specifications

Overall Dimensions

Length Overall	112'-0" (34.1 m)	Fuel Capacity	108,000 gal
Breadth Overall	44'-0" (13.4 m)	Z-Drives	Rolls Royce 305
Draft	20'-0" (6.1 m)	Firefighting	FIFI 1
Bollard Pull (est.)	230,000 lbs (115 short tons)	Bow Hawser Winch	Rapp, Single-drum (hold up to 250 metric tons of tension)
Horsepower	8,432	Aft Tow Winch	Rapp, Double-drum (pulling 74.5 metric tons on first layer)
Main Engines	2 x GE 12v250 TIER IV	Berths	9-10

206.332.8090

crowley.com/vesseldesign
Seattle, WA • Jacksonville, FL

CROWLEY®
People Who Know®