

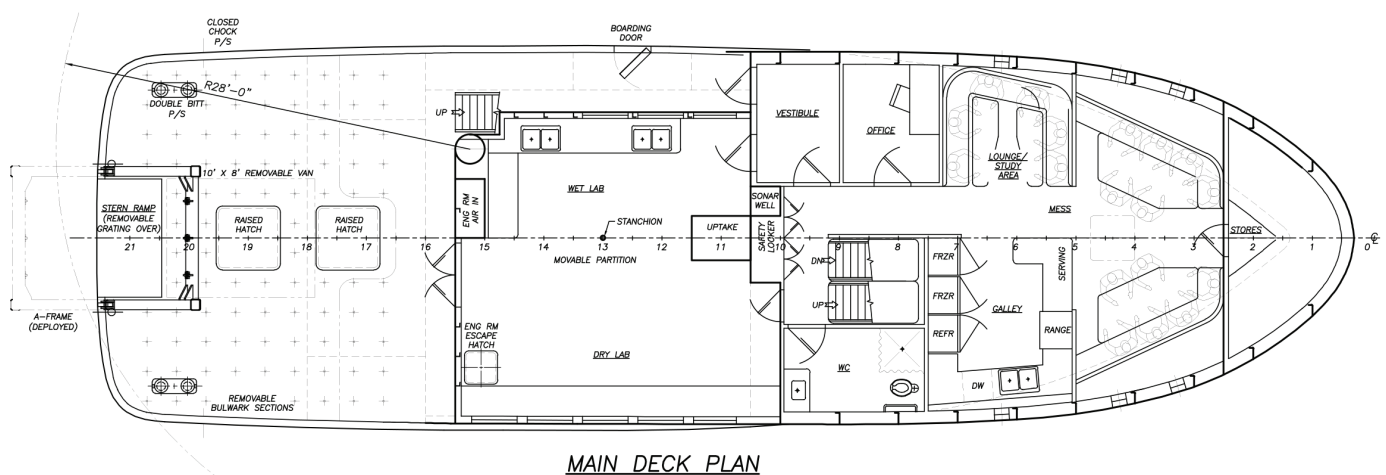
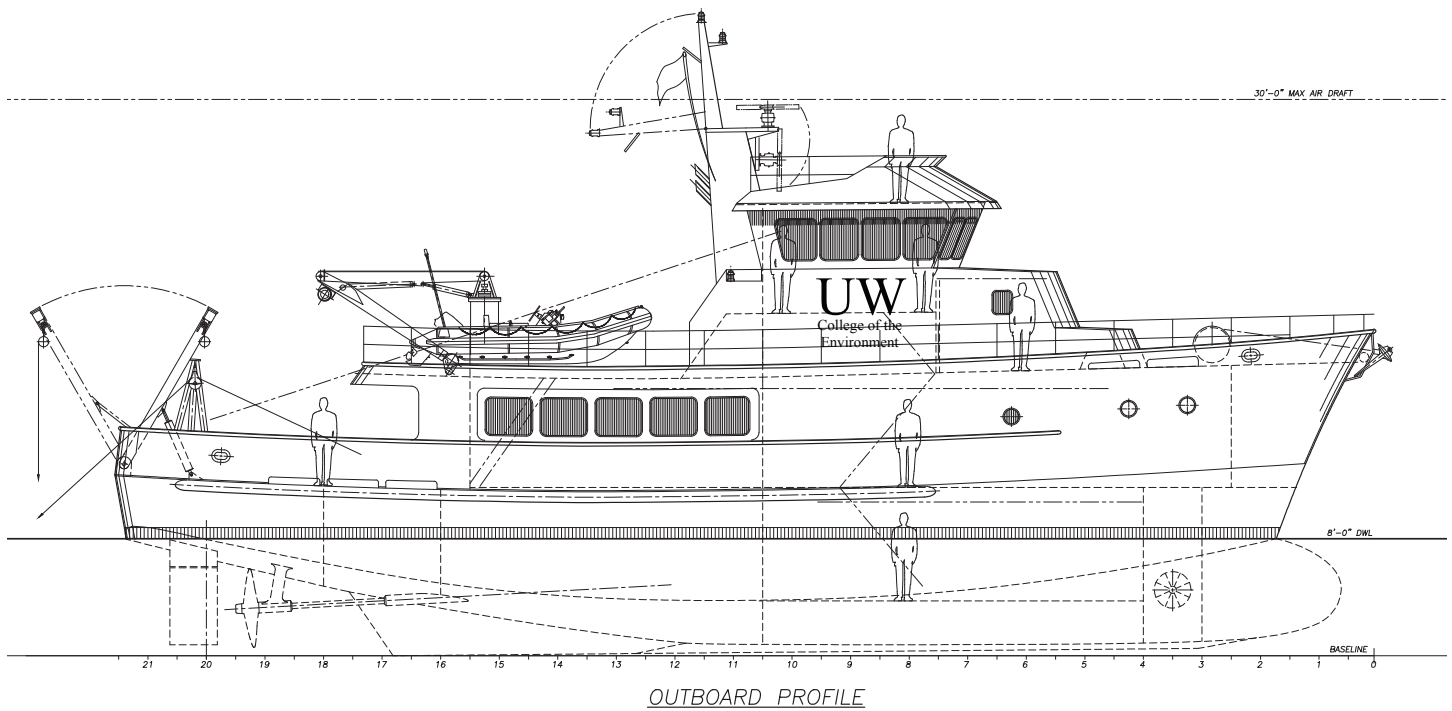


RF-09027

## 90' x 27' Research Vessel

The Jensen team was hired to support the University of Washington New Research Vessel project, which included two phases. Phase One involved preparing preliminary design studies and conducting numerous workshops. The workshops gave the opportunity to all stakeholders to be part of the solution and buy-in into the final design. Phase Two produced the Contract Design. The vessel length and beam are constrained by dimensions to allow the vessel to transit Ballard Locks,

as well as meet its shallow water research requirements. A folding mast permits the vessel to pass an air draft requirement. The vessel's mission roles of oceanographic and fisheries research are accomplished by taking advantage of the bolt-on bolt-off capability of reels, winches, gallows, etc.



# Vessel Specifications

## Overall Dimensions

Overall Length	90'-0" (27.4 m)	Fuel Oil	12,618 gal
Breadth	27'-0" (8 m)	Fresh Water	2,094 gal
Depth	3'-0" (3 m)	Dirty Oil	317 gal
Propulsion	2 x 375 kW Electric Motors	Gross Tonnage US Reg	<200 GRT
Complement	Extended cruise 3 crew, 11 scientists, 1 technician Day trips: up to 55	Gross Tonnage ITC	Approx 220 GT

206.332.8090

[crowley.com/vesseldesign](http://crowley.com/vesseldesign)  
Seattle, WA • Jacksonville, FL

**CROWLEY®**  
People Who Know®