

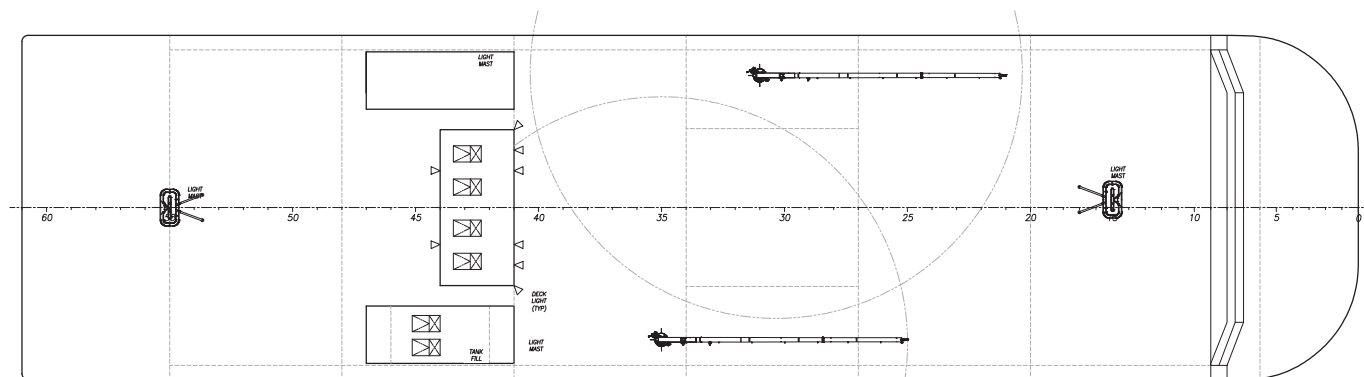


LPT-32684

## 326' Petroleum Barge

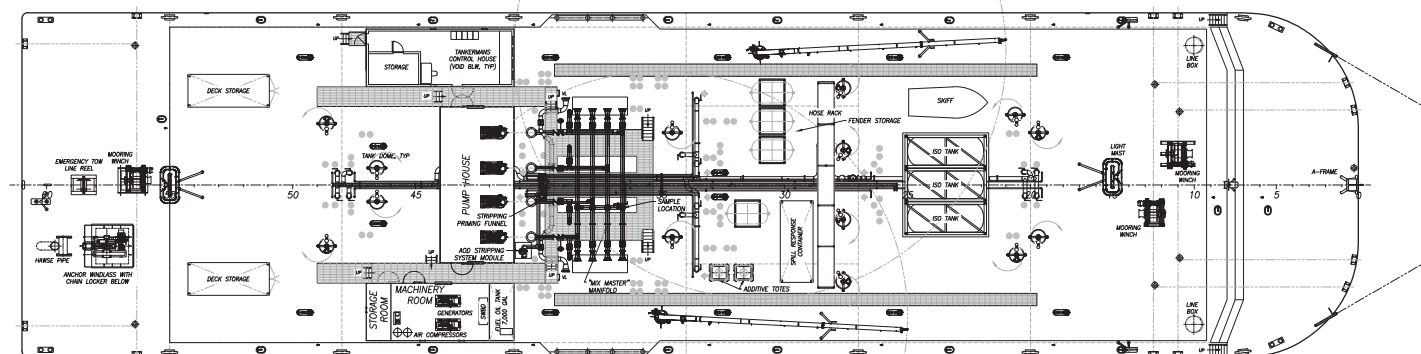
The *Antril S* is a double-hull oil barge built by Vigor in 2016. It has fourteen tanks for carriage of multiple clean oil products. Two (2) diesel generators provide electrical power to the barge. Housed in a centerline pump house are four (4) diesel engines which drive four cargo pumps that can discharge up to four (4) different products at a time through pipe manifolds to port or to starboard. The tankerman's control house is located to port of the pump house. The barge carries a spill response container forward and two (2) deck storage containers aft along with three (3) 20' ISO tanks forward.

Crowley's engineering services team delivers a full range of marine and engineering solutions. This includes detail and conceptual design, shipyard management, and on-site consulting services for all types of marine projects anywhere in the world. Our vessel design and marine engineering services are both extraordinary and cost effective. No matter the size and scope of your marine project, our professionals will help you achieve your objectives in the safest and most efficient manner possible.



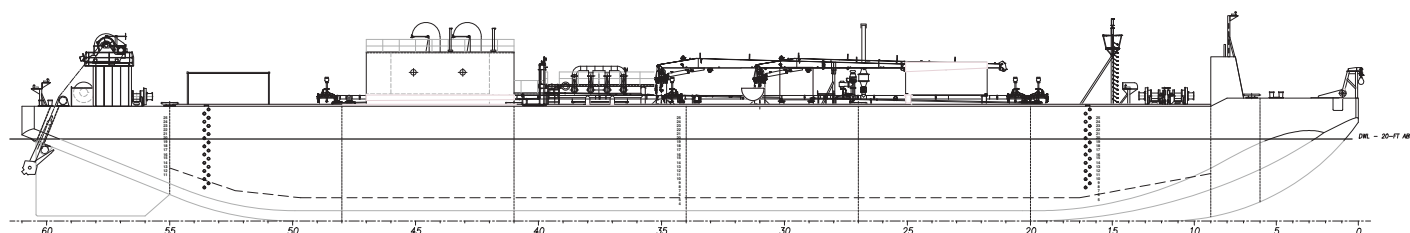
UPPER DECK AND HOUSE TOP PLAN

SCALE: 3/32"=1'-0"



MAIN DECK PLAN

SCALE: 3/32"=1'-0"



OUTBOARD PROFILE

SCALE: 3/32"=1'-0"

# Vessel Specifications

## Overall Dimensions

Length	326'-0" (99.4 m)	Cargo Capacity	71,200 bbls (11,320 m <sup>3</sup> )
Breadth	84'-0" (25.6 m)	Gross Tonnage	5765 (ITC)
Depth	28'-0" (8.5 m)	Class	ABS ✕ A1 Oil Tank Barge
Draft	19'-4" (5.9 m)	Load Line	Assigned

206.332.8090

[crowley.com/vesseldesign](http://crowley.com/vesseldesign)  
Seattle, WA • Jacksonville, FL

**CROWLEY®**  
People Who Know®