

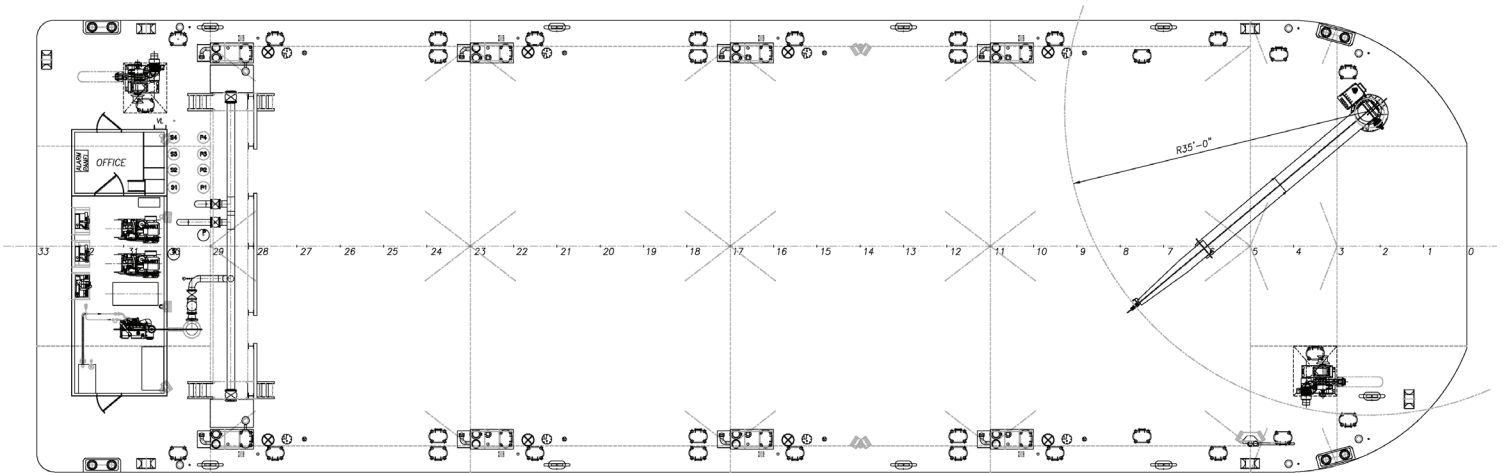
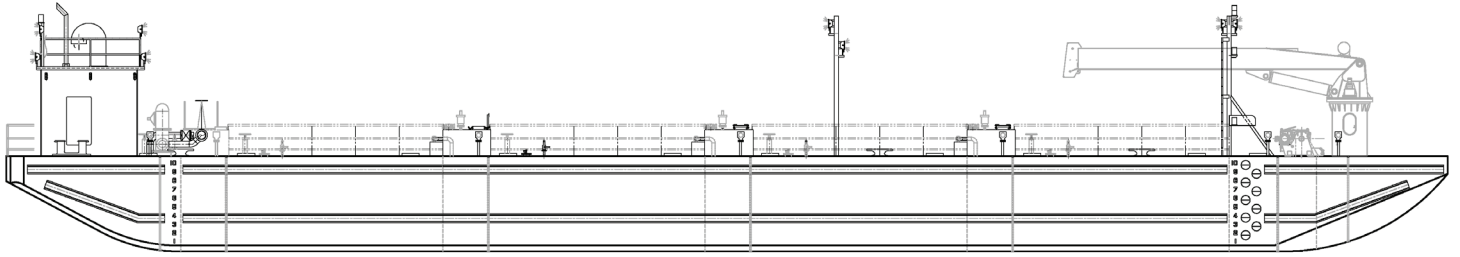


LPT-16552

Deck Cargo/Petroleum Barge

These double-hulled, combination deck cargo and tank barges are home ported in Nome, Alaska and are used for shallow draft operations and beach landings for the delivery of fuel and cargo to the remote communities of Western Alaska. The modern double-hulled design and coated cargo tanks provide superior environmental and cargo integrity protection. The barge is equipped with a dual anchor system for improved operational flexibility and individual tank segregations for handling multiple grades of cargo.

Crowley's engineering services team delivers a full range of marine and engineering solutions. This includes detail and conceptual design, shipyard management, and on-site consulting services for all types of marine projects anywhere in the world. Our vessel design and marine engineering services are both extraordinary and cost effective. No matter the size and scope of your marine project, our professionals will help you achieve your objectives in the safest and most efficient manner possible.



Vessel Specifications

Overall Dimensions

Length	165'-0" (50.3 m)	Cargo Capacity	6,700 bbls (1065 m ³)
Breadth	52'-0" (15.8 m)	Deck Capacity	3,000 lbs/ft ² (14.65 MT/m ²)
Depth	10'-10" (3.3 m)	Gross Tonnage	815 (670 ITC)
Draft	8'-4" (2.5m)	Class	ABS ✕ A1 Oil Tank Barge