



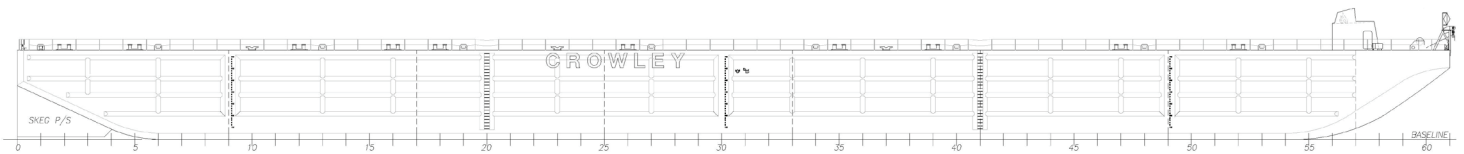
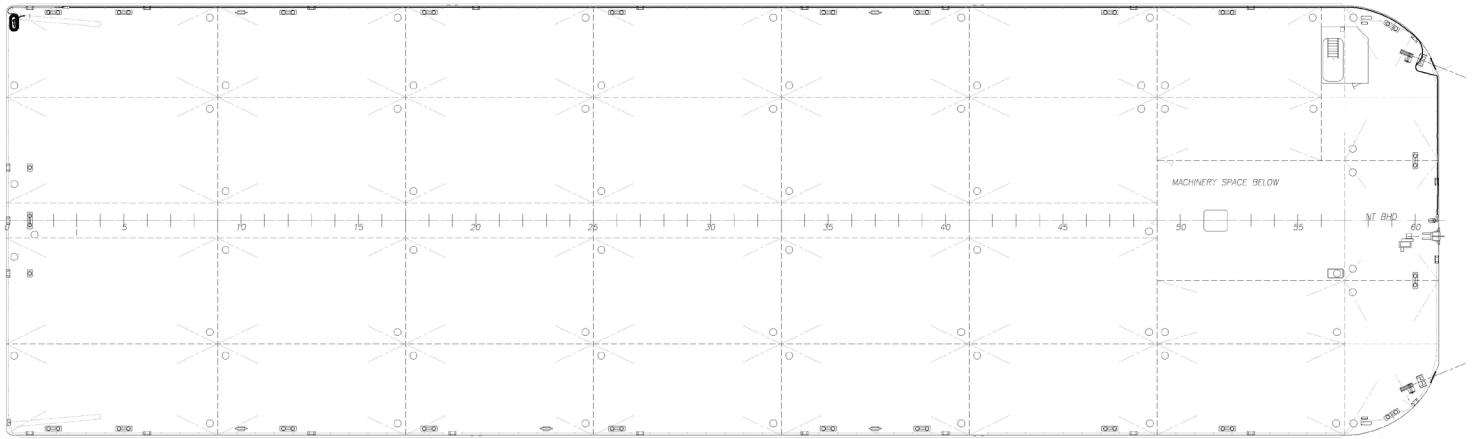
CP-400120

Heavy Deck Barge

The HDB series barges are designed with a robust ballast system to accommodate high port tidal ranges, and internal strengthening to withstand setting on the seabed while loaded.

Crowley's engineering services team delivers a full range of marine and engineering solutions. This includes detail and conceptual design, shipyard management, and on-site consulting services for all types of marine projects anywhere in the world. Our vessel design and marine engineering services are both extraordinary and cost effective. No matter the size and scope of your marine project, our professionals will help you achieve your objectives in the safest and most efficient manner possible.

Crowley's engineering services team delivers a full range of marine and engineering solutions. This includes detail and conceptual design, shipyard management, and on-site consulting services for all types of marine projects anywhere in the world. Our vessel design and marine engineering services are both extraordinary and cost effective. No matter the size and scope of your marine project, our professionals will help you achieve your objectives in the safest and most efficient manner possible.



Vessel Specifications

Overall Dimensions

Length	400'-3" (122.0 m)	Ballast	7,334,200 gal (27,763 m ³)
Breadth	119'-9" (36.5 m)	Fuel	2,300 gal (8.8 m ³)
Depth	24'-11" (7.6 m)	Gross Tonnage	9211 (ITC)
Draft (loaded)	19'-2" (5.84m)	Class	ABS ✕A1, Barge
Deck Capacity	5100 lbs/ft ² (25.0 MT/m ²)	Load Line	ABS

206.332.8090

crowley.com/vesseldesign

Seattle, WA • Jacksonville, FL

CROWLEY[®]
People Who Know[®]