

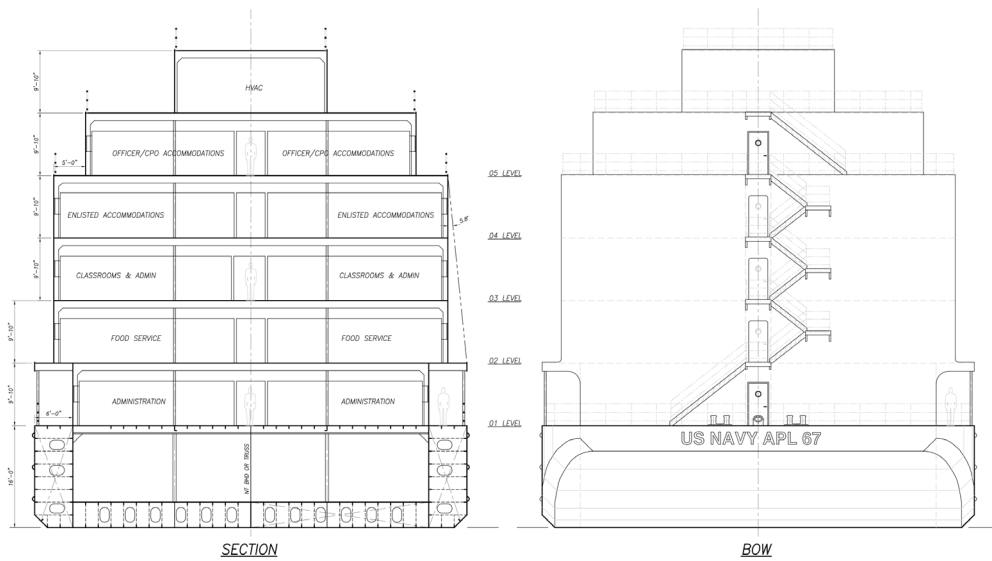
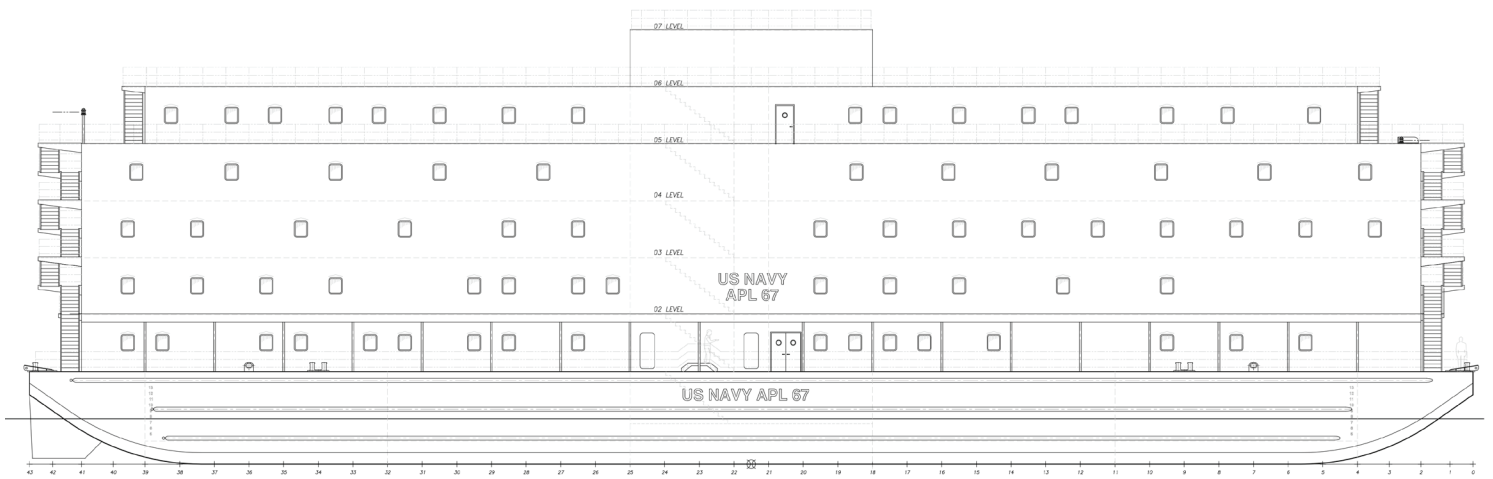


CP-25068

Accommodations Barge

This accommodations barge concept was prepared to satisfy the APL-67 draft performance specification, and is representative of what can be accomplished within the dimensions shown. In addition to extensive berthing, the concept includes offices, fitness facilities, medical facilities, conference rooms, messing and galley spaces, classrooms, laundry spaces, lounges, mechanical spaces and a running track.

Crowley's engineering services team delivers a full range of marine and engineering solutions. This includes detail and conceptual design, shipyard management, and on-site consulting services for all types of marine projects anywhere in the world. Our vessel design and marine engineering services are both extraordinary and cost effective. No matter the size and scope of your marine project, our professionals will help you achieve your objectives in the safest and most efficient manner possible.



Vessel Specifications

Overall Dimensions

Length	250'-0" (76.2 m)	Berths—Live Aboard	600
Breadth	68'-0" (20.7m)	Mess (per sitting)	240
Depth	16'-0" (4.9m)	Classrooms	300 seats in 8 classrooms
Draft	7'-10" (2.4 m)	Classification	ABS ✕A1 Accom. Barge

206.332.8090

crowley.com/vesseldesign

Seattle, WA • Jacksonville, FL

CROWLEY[®]
People Who Know[®]