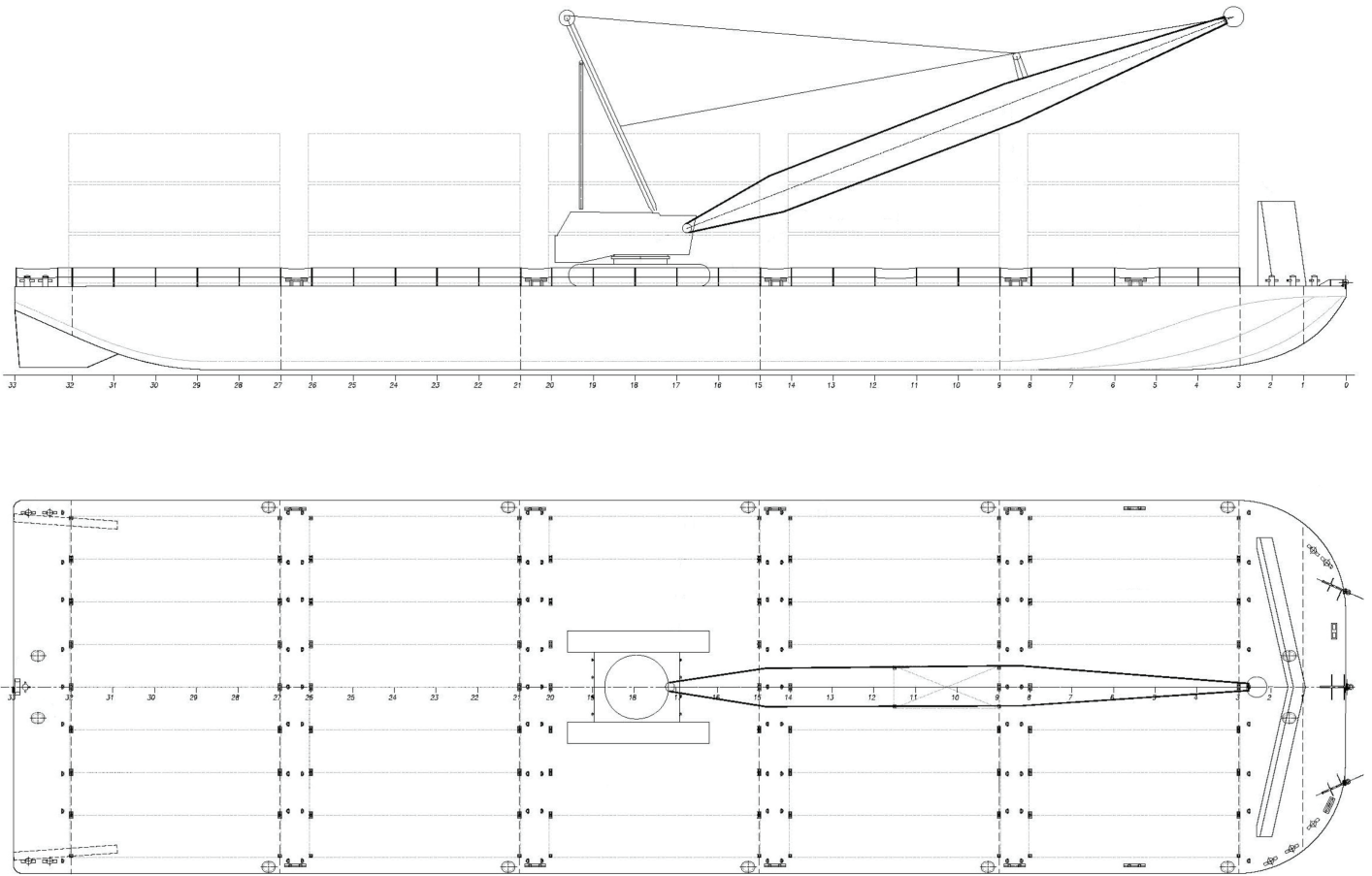




CD-25070

250' x 70' Deck-Cargo/ Crane Barge

This vessel was designed for customer Harley Marine, a Seattle-based marine transportation provider, to transport a wide variety of cargo between Dutch Harbor and Akutan, Alaska. It is designed as a floating platform for a 230-ton lift capacity Manitowoc 4100 crawler crane. The vessel's design features both D-rings to secure containers up to three high as well as eight lashing bars running fore and aft for other cargo such as heavy construction machinery or general equipment. The *ILIULIUK BAY* was constructed by Vigor's Swan Island shipyard in Portland, Oregon.



Vessel Specifications

Overall Dimensions

| | | | |
|---------|------------------|---------------|---------------------------|
| Length | 250'-0" (76.2 m) | Deck Load | 4000 lbs/ft2 (19.5 MT/m2) |
| Breadth | 70'-0" (21.3 m) | Gross Tonnage | 2003 GT ITC |
| Depth | 15'-8" (4.8 m) | Class | Load line only |
| Draft | 13'-0" (4.0 m) | | |

206.332.8090

crowley.com/vesseldesign
Seattle, WA • Jacksonville, FL

CROWLEY®
People Who Know®