



AT-07834 B-18350

10,000-Barrel Shallow Draft Articulated Tug Barge

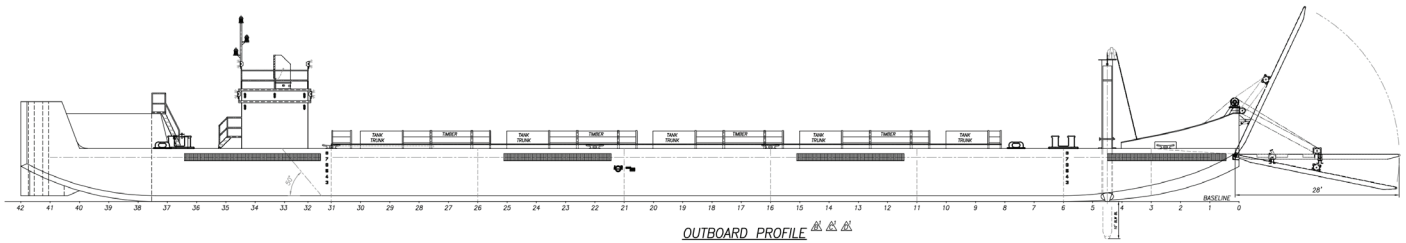
Crowley's engineering services team delivers a full range of marine and engineering solutions. This includes detail and conceptual design, shipyard management, and on-site consulting services for all types of marine projects anywhere in the world. Our vessel design and marine engineering services are both extraordinary and cost effective. No matter the size and scope of your marine project, our professionals will help you achieve your objectives in the safest and most efficient manner possible.

206.332.8090

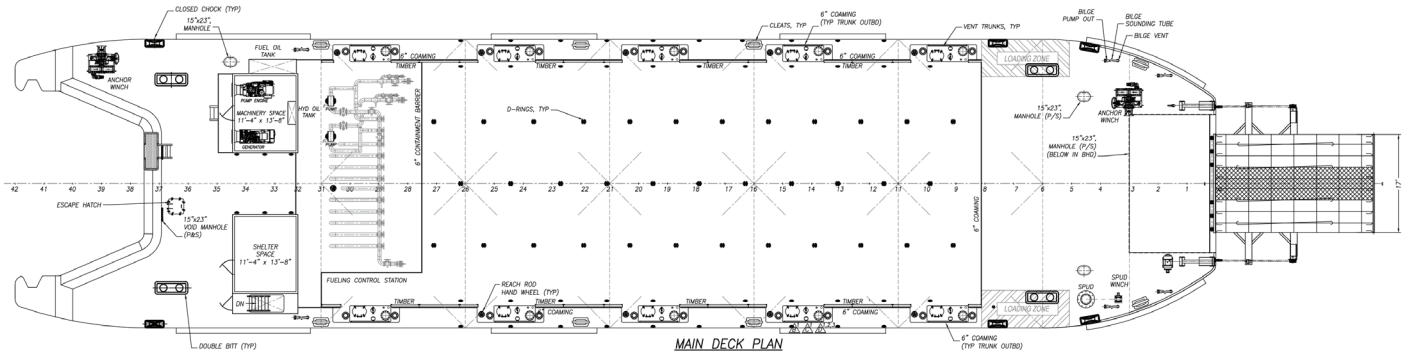
crowley.com/vesseldesign

Seattle, WA • Jacksonville, FL

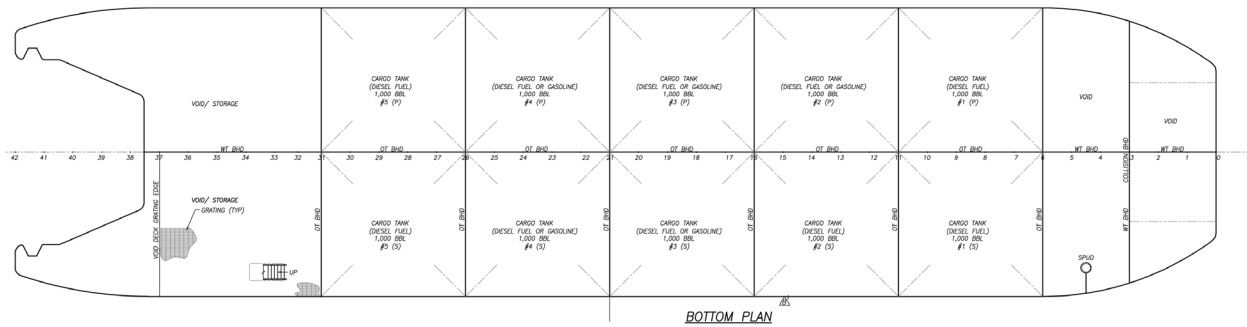
CROWLEY®
People Who Know®



OUTBOARD PROFILE



MAIN DECK PLAN



BOTTOM PLAN

Vessel Specifications

Overall Dimensions

TUG

Length, Overall	77'-8" (23.7 m)
Beam	32'-0" (9.8 m)
Depth	8'-0" (2.4 m)
Draft	4'-0" (1.2 m)
Fuel Oil	12,390 gal (47 m ³)
Fresh Water	3,050 gal (12 m ³)

BARGE

Length, Overall	208'-0" (63.4 m)
Breadth	50'-0" (15.2 m)
Depth at Side	9'-0" (2.7 m)
Cargo Fuel (Diesel)	10,000 BBL (1,590 m ³) (Max Available)
Cargo Fuel (Gasoline)	5,000 BBL (795 m ³) (Max Available)

206.332.8090

crowley.com/vesseldesign
Seattle, WA • Jacksonville, FL

CROWLEY®
People Who Know®