



United States Department of Agriculture  
Animal and Plant Health Inspection Service  
**Plant Protection and Quarantine**



# **Quarterly Perishable Cargo Meeting Port Everglades, Florida**

**April 4, 2012**

**United States Department of Agriculture  
Animal and Plant Health Inspection Service  
Plant Protection and Quarantine**



# **Current Treatment Concerns**

## **Commodity Packaging Materials**

- Plastic Wrappings

## **Commodities with no Fumigation Treatment**

- Papaya, Breadfruit, Banana Flowers

## **Mixing of Commodities**

- Cassava

## **Container Arrangement**

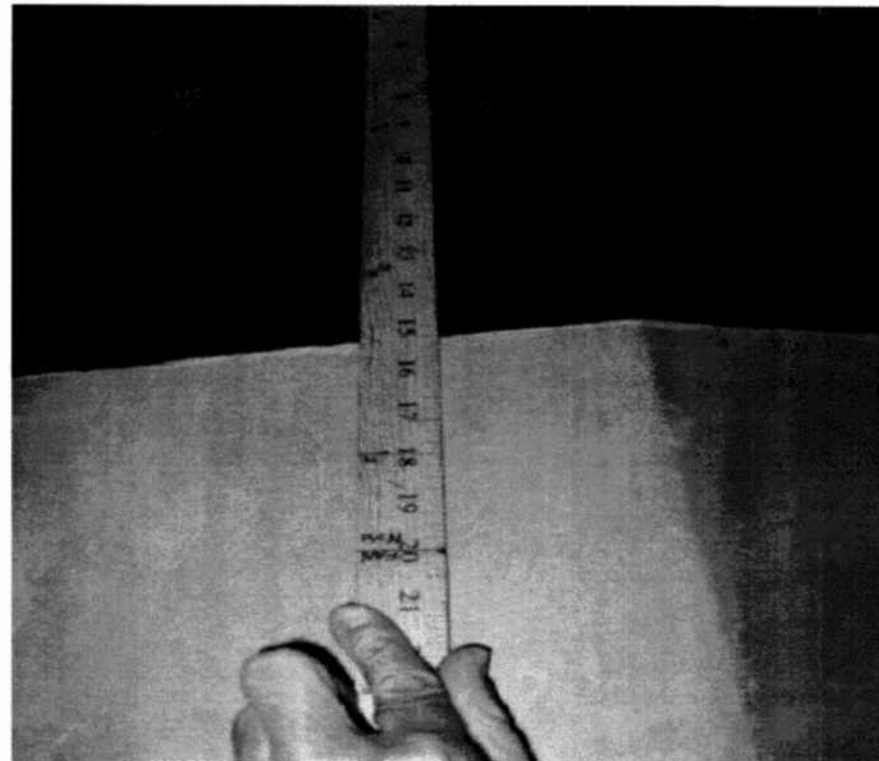
- Containers with no space for fumigation equipment



United States Department of Agriculture  
Animal and Plant Health Inspection Service  
**Plant Protection and Quarantine**



## **Containers with no space for fumigation equipment**





United States Department of Agriculture  
Animal and Plant Health Inspection Service  
**Plant Protection and Quarantine**



# Commodities with No Pallets





United States Department of Agriculture  
Animal and Plant Health Inspection Service  
**Plant Protection and Quarantine**



# Commodity with Plastic Wrapping





## **PEV Fumigation Requirements**

- Containers scheduled for treatment must be delivered and in place by 0900.
- Signed Copies of the EAN's and release form must be completed by 0845 when PHSS officer is ready to begin treatment preparations. Containers which are not accompanied by paperwork will not be treated.
- Once a MB treatment is prepared and an active fumigation has begun, additional containers cannot be moved in/out of fumigation site.



# PEV Fumigation Requirements

- Overtime
  - Occasionally mandatory overtime associated with fumigations is necessary. This occurs when commodity aerations require USDA monitoring ( Exemption 18 )
  - Final gas readings on fumigations which are not completed before close of the business day



United States Department of Agriculture  
Animal and Plant Health Inspection Service  
**Plant Protection and Quarantine**



## **Reimbursable Inspection and Quarantine Service APHIS FORM 89**

**Please establish a USDA reimbursable overtime  
account if your company does not currently have  
one**

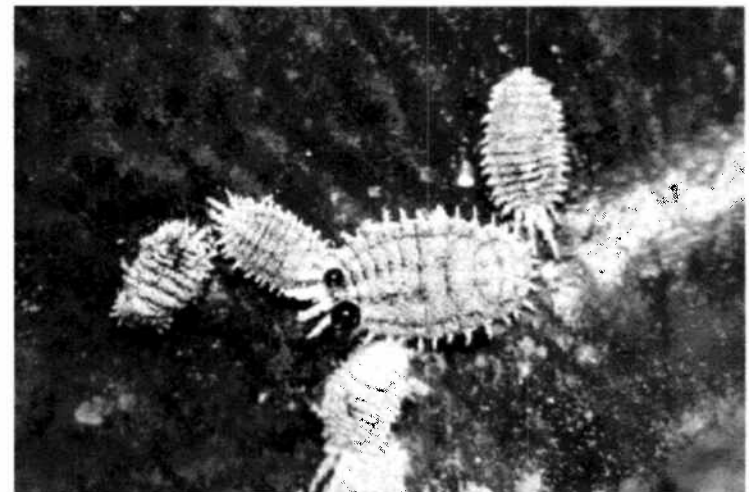
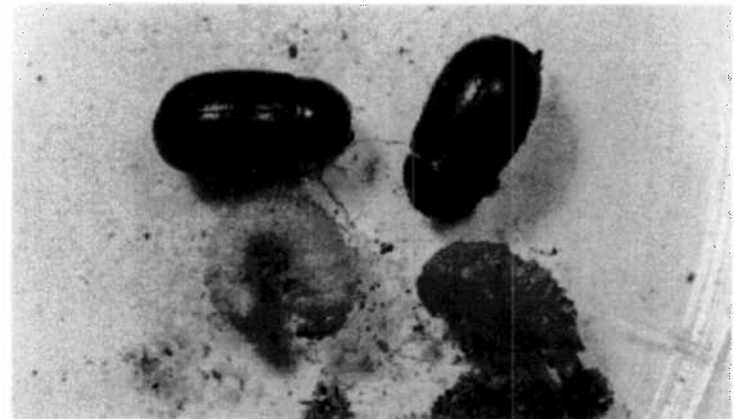
**Fax Application for credit Account to:  
(612) 336 – 3563 or send to:  
USDA, APHIS, FMD, ART  
100 North Sixth Street  
Suite 510 C  
Minneapolis, MN 55403**





## What is a highly mobile pest?

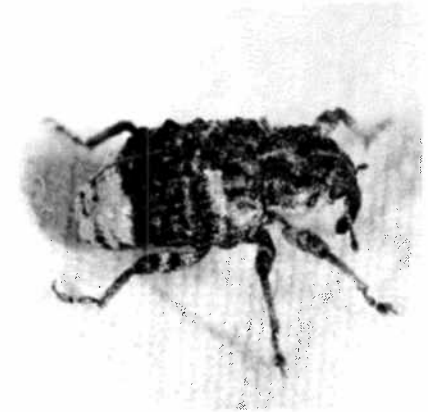
- A pest that is likely to move from its host to other commodities or its environment during reconditioning/restacking.
- Often able to jump or fly
- Sometimes life stage dependent





## **If the pest is highly mobile what does that mean?**

- Any reconditioning/restacking must occur at an approved refrigerated facility
  - Commingling commodities that can not be treated (papaya, breadfruit, banana flower) or different treatment schedules (cassava)
  - Overfilled containers
  - Noncompliant plastic





# Wood Packing Material Regulations

- Action is required when certain taxa of wood boring insects are found in wood packing material

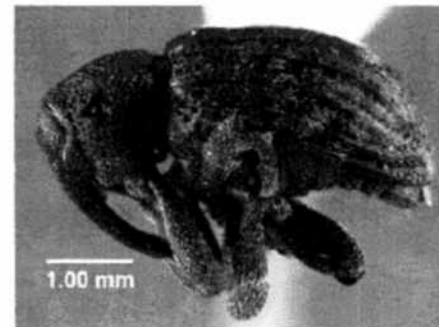
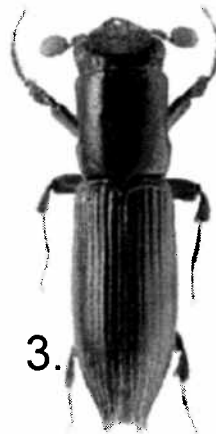
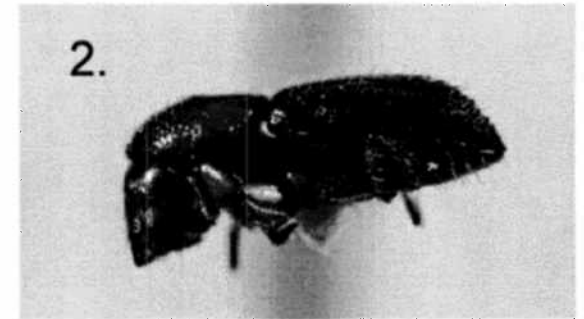
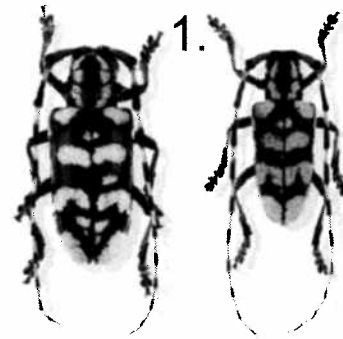




# Wood Packing Material Regulations

- Families most frequently encountered at Port Everglades are

1. Cerambycidae
2. Scolytidae
3. Platypodidae
4. Curculionidae
5. Buprestidae





## Wood Packing Material Violations at PEV

- 2011 –  
6 noncompliant  
containers
- Jan 2012 – April 2012  
8 noncompliant  
containers

