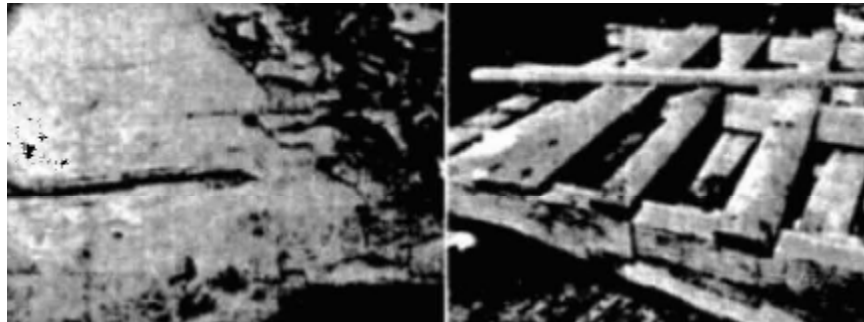


**Interception of *Cerambycidae* larvae in a wood pallet.**



The pallet was not associated with any specific shipment at the time of the inspection and had markings not in compliance with the ISPM 15 regulations. The Cerambycidae family, also known as the long-homed beetles is a family of beetles typically characterized by extremely long antennae often as long as or longer than the beetle's body. The larvae of this family are known for boring into wood, where they can cause extensive damage to either living trees or untreated lumber. One of the members of this family, the Asian Long-homed Beetle (*Anoplophora glabripennis*) poses a serious threat to forests of the northeast and maple syrup production. Infestations in Massachusetts, New York and New Jersey are under eradication by USDA APHIS.