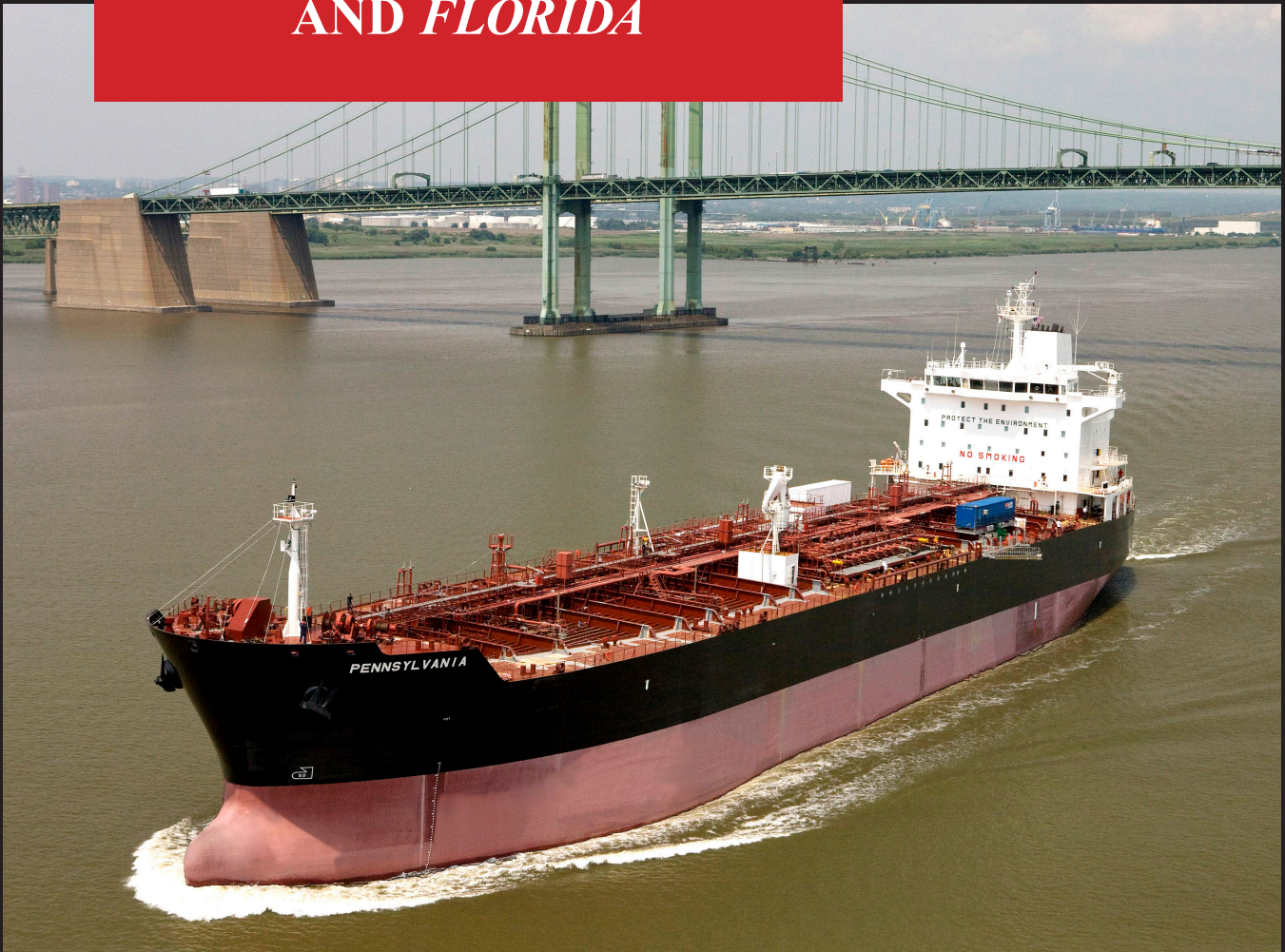


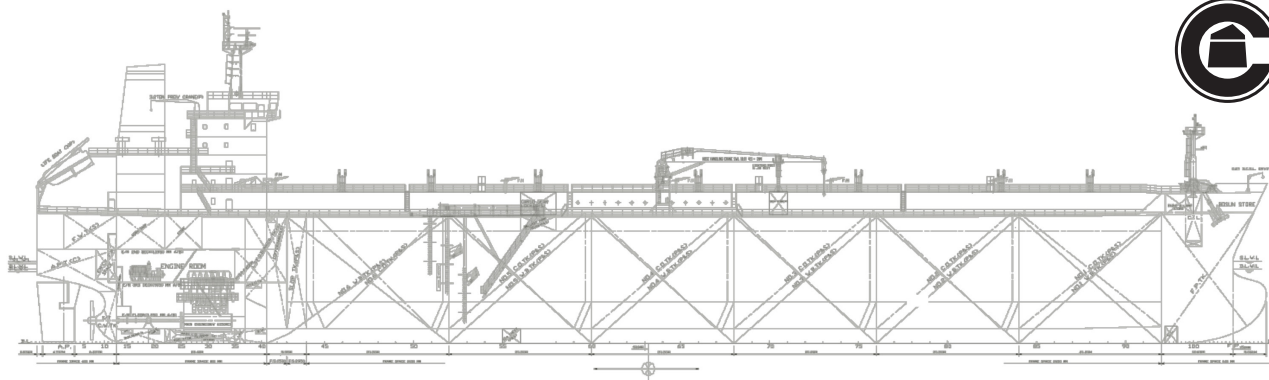
# M/T *PENNSYLVANIA* AND *FLORIDA*



To offer the widest variety of petroleum and chemical transportation solutions for customers, Crowley has further committed its investment in the Jones Act and the revitalization of its product tanker fleet with the purchase of two U.S.-flagged Veteran Class tankers. As the 13th and 14th vessels built in their class, their proven design provides Crowley customers with ABS-classed vessels that have been thoroughly tested and refined for performance and reliability.

As of 2013, Crowley will own and operate two of these tankers, which are capable of carrying 330,000 barrels of petroleum products and chemicals. The Veteran Class design is based on the well proven as-built Athenian Class 46,000 DWT product tanker from Hyundai Mipo Dockyards. The standard design was modified to conform to U.S. registry and U.S. coastwise trade requirements.





## M/T PENNSYLVANIA AND FLORIDA SPECIFICATIONS:

### Main Dimensions:

Length overall .....	abt. 183.2 m
Length between perpendiculars .....	174.0 m
Breadth, molded .....	32.2 m
Depth, at side .....	18.8 m
Draft, design / scantling .....	abt. 11.0 / 12.2 m
Deadweight, at 11.0 / 12.2 m draft .....	abt. 40,700 / 45,800 t
Gross tonnage .....	abt. 29,200 t
Tank capacity	
Cargo .....	52,650 m <sup>3</sup>
Slops .....	1,150 m <sup>3</sup>
Cargo & slops .....	53,800 m <sup>3</sup>
Ballast .....	22,500 m <sup>3</sup>
HFO .....	1,600 m <sup>3</sup>
MDO .....	170 m <sup>3</sup>
Speed, at 11.0 m, 85% MCR, 15% SM .....	abt. 14.6 kn

### Class:

American Bureau of Shipping .....	+A1(E), Oil/Chemical Carrier, ESP, Ship Type 2, +AMS, +ACCU, SH, SHCM, COW, UWILD
Flag of Registry .....	United States of America
Builder .....	Aker Philadelphia Shipyard
Year .....	2012 and 2013

### Equipment for Cargo:

Cargo tanks .....	6 pairs & slops
Hyd. submerged pumps .....	12 x 600 m <sup>3</sup> /h, 125 m TH
Unloading/loading capacity .....	3,600 m <sup>3</sup> /h

### Ship's Equipment:

Semi-balanced spade rudder	
2 combined anchor windlass / mooring winches	
4 mooring winches	
Lifeboat (freefall) .....	1 x 30 pers.
Cargo hose handling crane .....	1 x 10 t SWL

### Machinery:

Main engine .....	MAN-B&W 6S50MC, 2-stroke, 6-cylinder, EPA Tier II Compliant
N.C.R. (85% MCR) .....	9,894 BHP (7,380 kW) at 123.9 RPM
Propeller .....	1 x Fixed pitch, 4-bladed
Diameter x pitch (0.7R) .....	5.80 x 4.12 m
Heat generating plant (steam)	
Auxillary system .....	1 x 18 t/h
Exhaust gas (90% MCR, ISO) .....	1 x 1 t/h
Diesel generator aggregates .....	3 x 700 kW at 720 RPM EPA Tier II Compliant
Integrated automation system	
Ballast system .....	2 lines, 2 x 750 m <sup>3</sup> /h
Water firefighting system	
CO <sub>2</sub> firefighting system	
Foam water spray system	

### Accommodation:

Complement, including pilot .....	28 + 6
-----------------------------------	--------

9487 Regency Square Boulevard  
Jacksonville, Florida 32226  
(904) 727-2200  
[www.crowley.com](http://www.crowley.com)

**CROWLEY**<sup>®</sup>  
People Who Know<sup>®</sup>