

Julie B - 400' x 130' x 25' - 121.92 m x 39.62 m x 7.62 m



Specifications

Summer Load Line		
Keel Draft	19' 0.8125"	5.81 m
Summer Load Line Displacement	28,551.7 ST	25,901.67 MT
Summer Load Line Deadweight	23,636.9 ST	21,443.03 MT
Lightship Draft (mean)	3' 10"	1.17 m
Lightship Displacement	4,914.79 ST	4,458.62 MT
Lightship LCG Forward of Transom	201.11'	61.30 m
Lightship VCG Above Baseline	13.32'	4.06 m
Draft Mark Locations - Forward of Transom		
Fwd Marks	337.33'	102.82 m
Aft Marks	60.83'	18.54 m

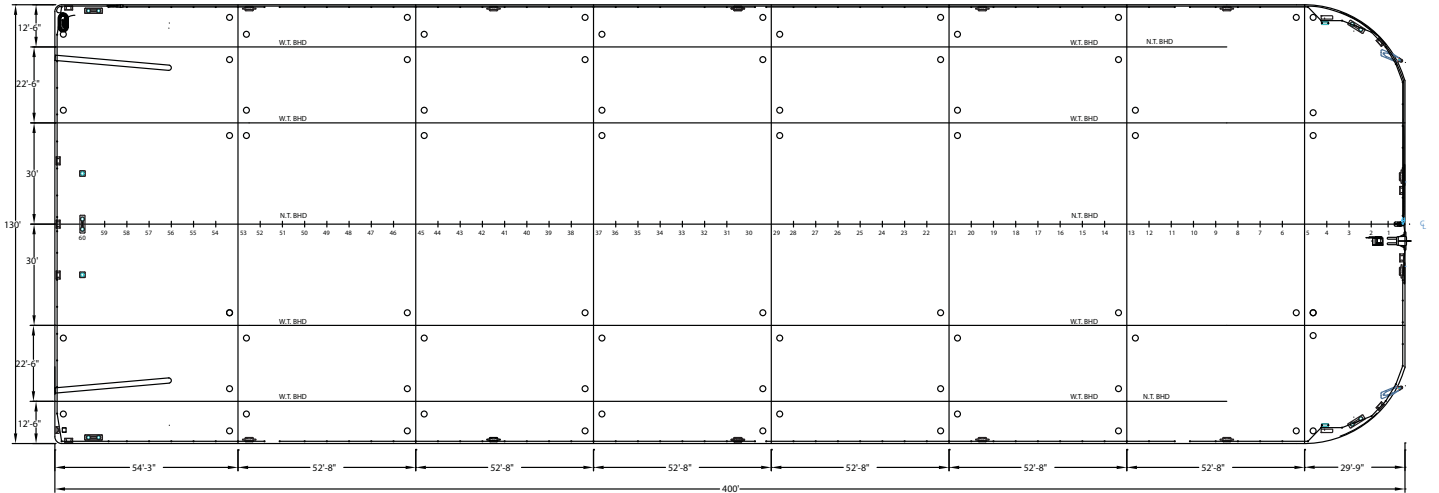
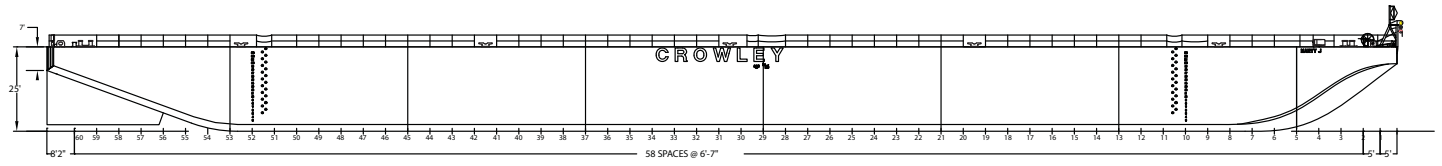
Longitudinal Strength Data

Maximum Allowable Still Water Bending Moments		
In Port	441,990 LT-ft	136,880 MT-m
At Sea	209,967 LT-ft	65,025 MT-m
Maximum Allowable Still Water Shear Force		
In Port	4,219 LT	4,286.70 MT
At Sea	2,368 LT	2,406 MT

DWT (M/T)	DRAFT (M _{approx.})	DWT (S/T)	DRAFT (FEET)	DISPL (S/T,S.W.)	TPI
20865		23000	19	28000	122
19958		22000	18	27000	
19051		21000	17	26000	
18144		20000	17	25000	
17237	5.0	19000	16	24000	120
16329		18000	16	23000	
15422		17000	15	22000	
14515		16000	15	21000	118
13608		15000	14	20000	
12701	4.0	14000	13	19000	116
11793		13000	13	18000	
10886		12000	12	17000	114
9979		11000	11	16000	
9072		10000	11	15000	
8165	3.0	9000	10	14000	112
7257		8000	10	13000	
6350		7000	9	12000	110
5443		6000	8	11000	
4536		5000	8	10000	
3629	2.0	4000	7	9000	108
2722		3000	6	8000	
1814		2000	5	7000	106
907		1000	5	6000	
0	1.0	0	4	5000	104
			3	4000	

CROWLEY
People Who Know®

Julie B - Summary of Allowable Loads



Transverse Frames

Uniform Linear Load	42,308 lbf/ft	62.96 MT/m
Point Load	198,998 lbs	90.26 MT

Nominal Overall Deck Load Rating

Counting Long'l Stiffeners	4,200 lbf/ft ²	20.51 MT/m ²
----------------------------	---------------------------	-------------------------

Transverse Bulkheads

Uniform Linear Load	82,094 lbf/ft	122.17 MT/m
Point Load		
(only over web frames)	547,293 lbf	248.25 MT

Intersection of Structures

Transverse and Longitudinal Bulkheads	814.89 Kips	369.63 MT
Transverse Bulkhead and Side Shell	772.97 Kips	350.61 MT
Transverse Frame and Side Shell	599.60 Kips	271.97 MT

Longitudinal Bulkheads

Uniform Linear Load	74,722 lbf/ft	111.20 MT/m
Point Load		
(only over web frames)	515,205 lbf	233.69 MT

