



Name	Number	Year Built
MARTY J	1193074	2006
455 3	1204668	2007
455 4	1218567	2009
455 5	1218997	2009
455 6	1220095	2009
455 7	1221895	2009
455 8	1225722	2010
455 9	1227728	2010

455 SERIES

400' x 105' x 25' • 121.92m x 32.00m x 7.62m

Specifications

Summer Load Line

Keel Draft 9' 1.1875" • 5.82m
 Displacement 23,090ST • 20,946.90MT
 Deadweight 19,226ST • 17,441.53MT

Lightship

Draft (mean) 3'9" • 1.14m
 Displacement 3,863.87ST • 3,505.24MT
 LCG Forward of Transom 201.11' • 61.30m
 VCG Above Baseline 202.22' • 61.64m

Draft Mark Locations Forward of Transom

Fwd Marks 337.77' • 102.95m
 Aft Marks 60.83' • 18.54m

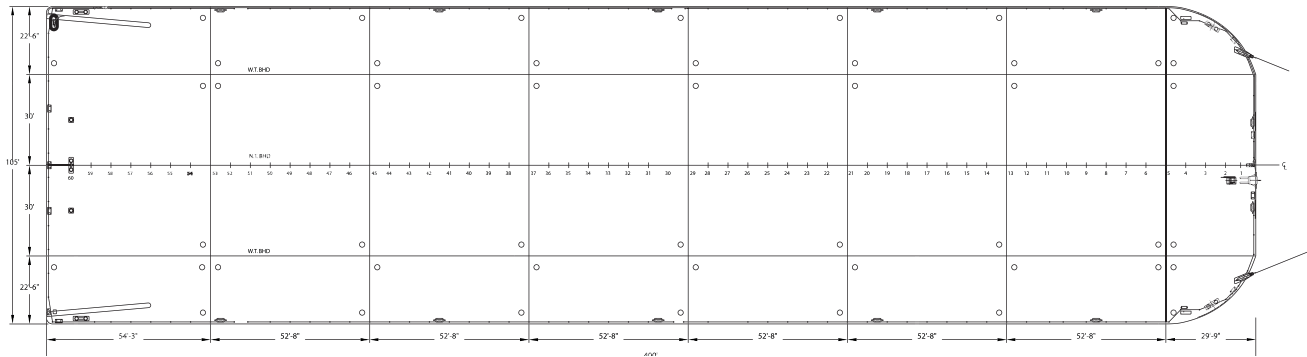
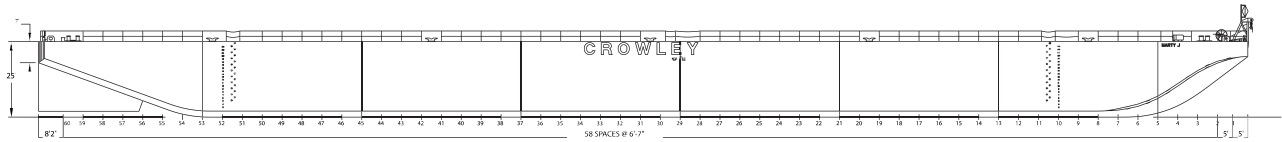
Longitudinal Strength Data

Maximum Allowable Still Water Bending Moments
 In Port 345,117LT-ft • 106,880MT-m
 At Sea 157,468LT-ft • 48,766MT-m

Maximum Allowable Still Water Shear Force

In Port 3,276LT • 3,328.57MT
 At Sea 1,781LT • 1,809.58MT

DWT (S/T)	DRAFT (FEET)	DISPL (S/T,S.W.)	TPI
19000	19	23000	110
18000	18	22000	
17000	17	21000	
16000	17	20000	108
15000	16	19000	
14000	15	18000	
13000	14	17000	106
12000	14	16000	
11000	13	15000	
10000	12	14000	104
9000	11	13000	
8000	11	12000	
7000	10	11000	102
6000	9	10000	
5000	8	9000	
4000	7	8000	98
3000	6	7000	
2000	5	6000	
1000	5	5000	96
0	4	4000	
	3		



455 SERIES - SUMMARY OF ALLOWABLE LOADS

Transverse Frames

Uniform Linear Load - 42,308lb/ft • 62.96MT/m

Point Load - 198,998lbs • 90.26MT

Nominal Overall Deck Load Rating

4,200lb/ft² • 20.51MT/m²

Transverse Bulkheads

Uniform Linear Load - 82,094lb/ft • 122.17MT/m

Point Load - 547,293lb • 248.25MT

(only over web frames)

Intersection of Structures

Transverse Bulkhead and Longitudinal Bulkhead
814.89Kips • 369.63MT

Transverse Bulkhead and Side Shell
772.97Kips • 350.61MT

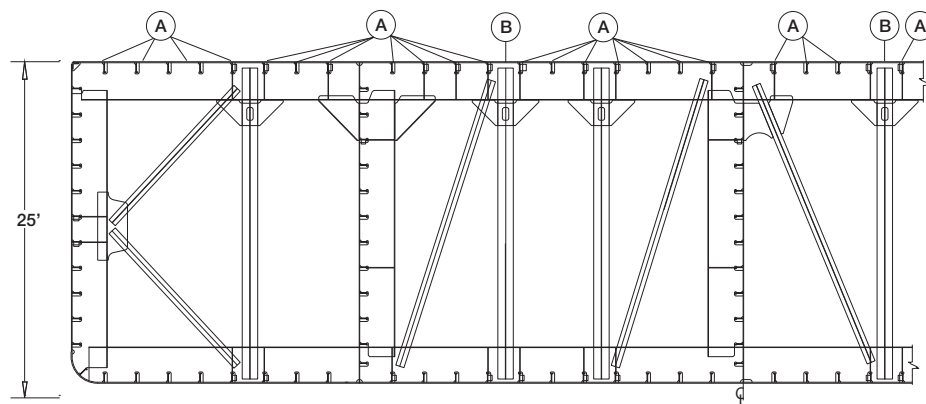
Transverse Frame and Side Shell
599.60Kips • 271.97MT

Longitudinal Bulkheads

Uniform Linear Load - 74,722lb/ft • 111.20MT/m

Point Load - 515,205lb • 233.69MT

(only over web frames)



A - Longitudinal Stiffeners
B - Frame Stanchions

*All information contained herein (including but not limited to any specifications, particulars, capacities, or capabilities) is believed to be correct, but is not guaranteed and is subject to change without notice.

15894 Diplomatic Plaza Drive • Houston, TX 77032 • O: 832-850-4111 / F: 832-850-4141

9487 Regency Square Blvd. • Jacksonville, FL 32225 • O: 904-727-2200

www.crowley.com/offshoreservices

CROWLEY[®]
People Who Know[®]