

# BARGES - DBL 165 SERIES



## DBL 165 SERIES BARGE SPECIFICATIONS

Crowley is a major provider of transportation services on the U.S. West Coast and in Alaska. The double-hulled, combination deck cargo and tank barges are home ported in Nome, Alaska and are used for shallow draft operations and beach landings for the delivery of fuel and cargo to the remote communities of Western Alaska. The first two barges in the series, 165-1 and 165-2 were commissioned in 2011. The barges were specifically designed for the rigors of Western Alaska, with the highest priority given for the safety of the personnel and the environment.

The modern double-hulled design and coated cargo tanks provide superior environmental and cargo integrity protection. The barge is equipped with a dual anchor system for improved operational flexibility and individual tank segregations for handling multiple grades of cargo.

The deck cargo area is equipped with a containment fence, hydraulic deck crane and portable cargo handling ramps. The barge carries a reel with 2,000 feet of 4-inch hose for transferring bulk petroleum products at remote sites lacking dock facilities. The barge is also outfitted with spill response and ancillary support equipment. The barge is designed to operate in either the push mode or as a conventional towed unit.

### Key features include:

- Double-hull design meeting or exceeding OPA 90 requirements
- Eight individual cargo tank segregations
- Epoxy-coated cargo tanks
- High-level tank alarm system
- High deck cargo loading capability
- Bow and stern anchor systems

**CROWLEY**<sup>®</sup>  
People Who Know<sup>™</sup>

201 Arctic Slope Ave  
Anchorage, Alaska 99516  
(907) 777-5505

[www.crowley.com](http://www.crowley.com)

# DBL 165 SERIES BARGE SPECIFICATIONS



**FLAG**

United States

**PORT OF REGISTRY**

Anchorage, AK

**OVERALL DIMENSIONS**

Length: 158.4'  
 Breadth: 52'  
 Depth: 10' 8"

**TONNAGE**

GRT 815

**CONSTRUCTION**

Steel

**LIGHT DRAFT**

32"

**LOADED DRAFT**

86"

**CUBIC CAPACITY**

6,516 bbls.(273,680 gallons)

**NUMBER OF CARGO TANKS**

1-4 P/S

**CARGO PUMPS**

1

**PUMP ENGINES**

Caterpillar C6.6

**CERTIFIED FOR**

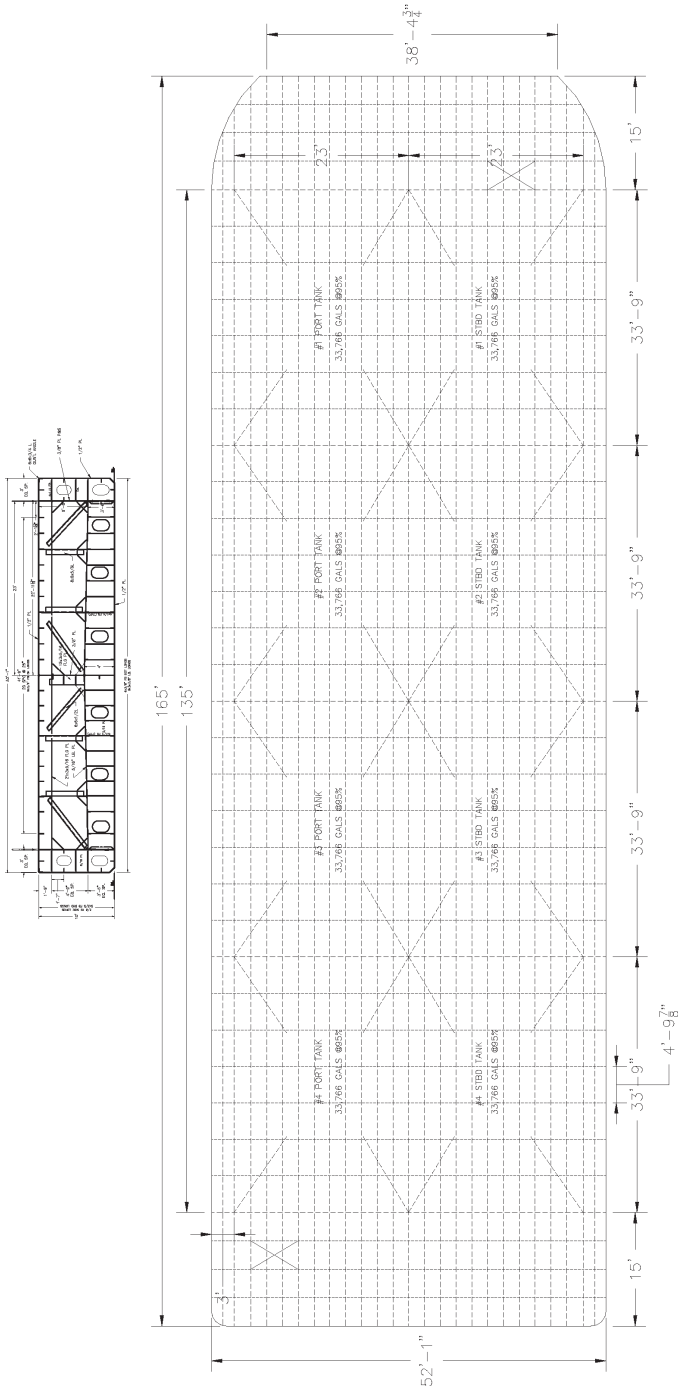
Grade B and lower

**DECK CARGO LOAD LIMIT**

2,500 lbs per square foot.

**CLASSIFICATION**

✘ A1 Oil Tank Barge



201 Arctic Slope Ave  
 Anchorage, Alaska 99516  
 (907) 777-5505

www.crowley.com