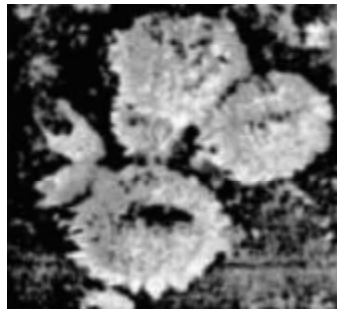


Interception of Pseudococcidae, *Nipaecoccus gilli* on a Shipment of Areca Tropical Cutflowers from Costa Rica; First Find Nationwide



The SEL specialist noted that this detection also represents both a new host record, Areca, and a new distribution record, Costa Rica, for *N. gilli*. *Previously reported hosts were Acacia, Dieffenbachia, and Manilkara, and the only previously reported country of origin was Mexico.* According to national database records, this find was a first nationwide for this species