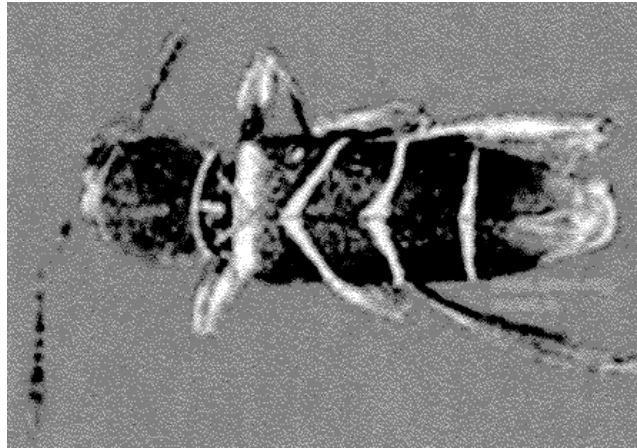


Cerambycidae in a shipment of *Zantedeschia sp. cut flowers* from Colombia. Records in the national database indicate that ***Ygapema errata* is the first nationally intercepted species in the family Cerambycidae ( Ceremycinae: Clytini).**



**Pest Information: *Ygapema errata* (Martins and Galileo) 2008 is in the family Cerambycidae** (long homed beetle), subfamily Cerembycinae, and tribe Clytini. Literature (Monne and Bizark 2008) has shown that *Ygapema* species are Neotropical in distribution, reported from Peru, Colombia, and Bolivia. This species is recognized by several longitudinal yellow stripes on the head, thorax, and abdomen that curve distally and two parallel yellow stripes on the frons. *Ygapema errata* is a small species, measuring about 4 - 6mm. Although little is known of the economic importance of this species, several species within the tribe Clytini are considered pestiferous.