

400 Series - 400' x 99'6" x 20'



Specifications

Summer Load Line Keel Draft	14' 2.75"
Summer Load Line Displacement	15,416 ST
Summer Load Line Deadweight	12,035 ST
Lightship Draft	4' 0.5"
Lightship Displacement	3,380 ST
Lightship LCG	203.4 ft Forward of Transom
Lightship VCG	10.5 ft above Baseline
Draft Mark Locations	
Fwd Marks	320 ft Forward of Transom
Aft Marks	50 ft Forward of Transom

Longitudinal Strength Data

Maximum Allowable Still Water Bending Moments	
In Port	122,850 LT-ft
At Sea	57,950 LT-ft
Maximum Allowable Still Water Shear Force	
In Port	4,083 LT
At Sea	1,897 LT

DWT (S/T)	DRAFT (FEET)	DISPL (S/T,S.W.)	TPI
12000	14	15000	104
11000	13	14000	102
10000	12	13000	
9000	11	12000	
8000	10	11000	100
7000	9	10000	98
6000	8	9000	
5000	7	8000	96
4000	6	7000	
3000	5	6000	94
2000	4	5000	
1000	3	4000	92
0	2	3000	
	1		90
	0		



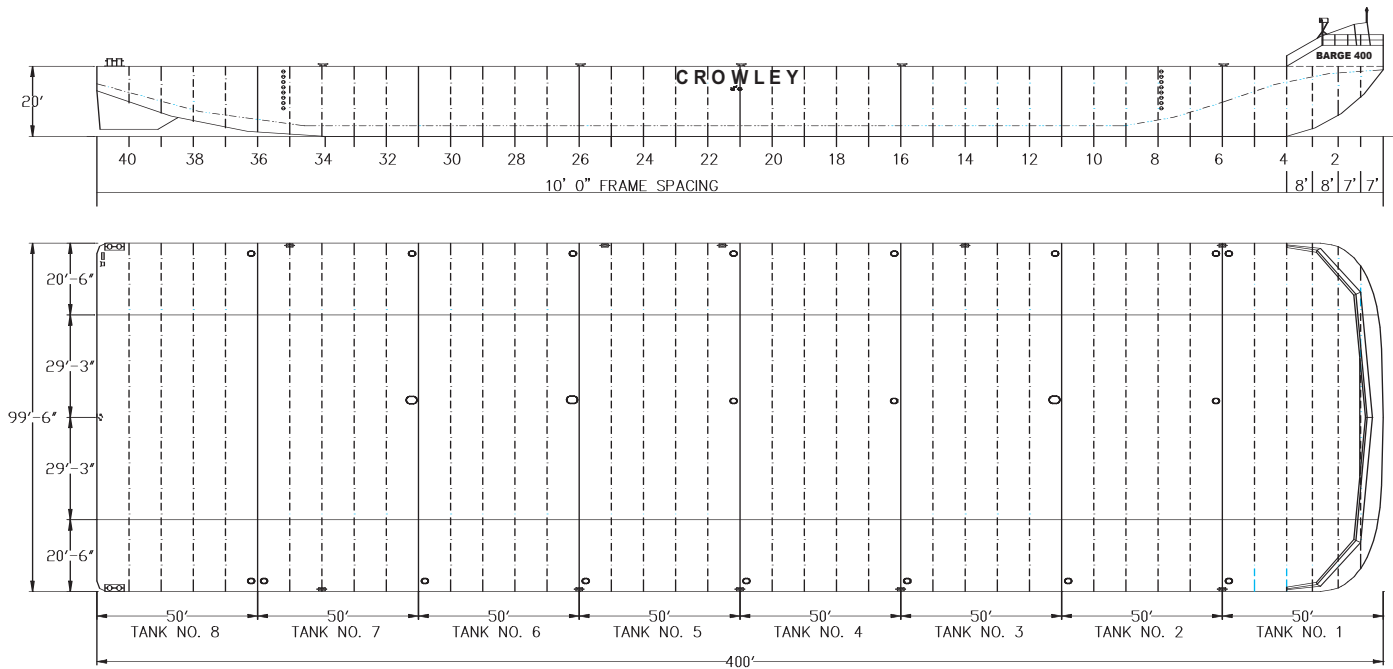
CROWLEY[®]
People Who Know[™]

Liner Shipping • Worldwide Logistics • Project Management • Ship Assist & Escort • Alaska Fuel Sales & Distribution • Energy Support • Ocean Towing & Transportation • Salvage & Emergency Response • Petroleum & Chemical Transportation

www.crowley.com



Summary of Allowable Loads



Transverse Frames

Uniform Linear Load - 16,247 lbf/ft
Point Load - 162, - lbs

Transverse Bulkheads

Uniform Linear Load - 33148 lbf/ft²
Point Load - 331481lbf
(only over web frames)

Longitudinal Bulkheads

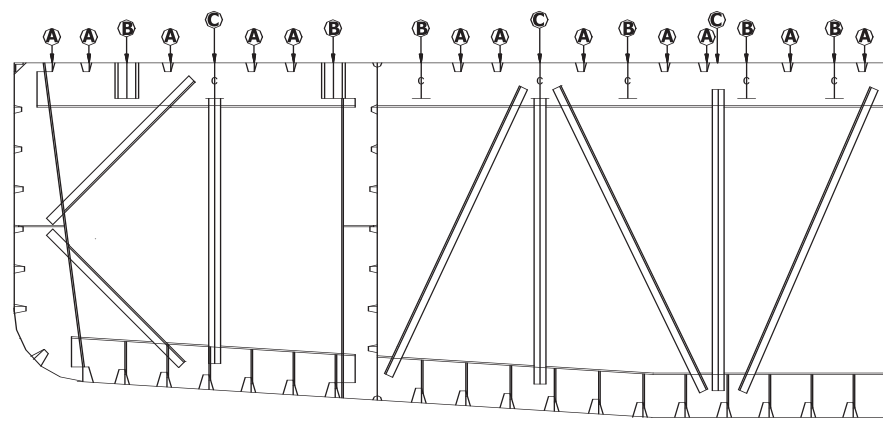
Uniform Linear Load - 31131 lbf/ft²
Point Load - 374192 lbf
(only over web frames)

Nominal Overall Deck Load Rating

Counting Long'l Stiffeners - 1072 lbf/ft²
Counting only Frames, - 1625 lbf/ft²
Rail Girders and Bhds

Intersection of Structures

Transverse and Longitudinal Bulkheads - 449 Kips
Transverse Bulkhead and Side Shell - 620 Kips
Transverse Frame and Side Shell - 519 Kips



A - Longitudinal Stiffeners B - Rail Girders C - Frame Stanchions