

# Distribution Center Network

*Crowley's distribution center network was established to support the warehousing and distribution needs of our customers throughout the Americas. Each distribution center is staffed with professionals experienced in warehousing and distribution. We offer the highest level of service and security for your cargo. Coupled with our Transportation Management services, Crowley is well equipped to handle all of your cargo shipment and storage needs.*



## El Salvador

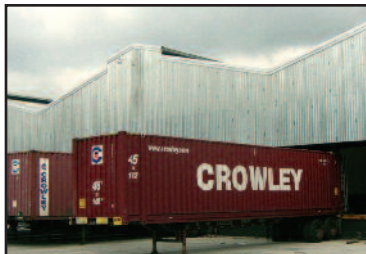
- 24,580 Square Feet
- Free Zone

**Export Salva Free Zone,  
Building 10 South  
Lourdes Colón,  
La Libertad  
El Salvador  
(503) 318-0656**

## Honduras

- 34,691 Square Feet
- Free Zone

**Zona libre Inhdelva  
Este-nave XXXIII  
Carretera la Jutosa  
Choloma Cortes,  
Honduras  
(504) 617-0600**



## Incoinsa Free Zone El Naranjo

- 12,900 Square Feet
- Free Zone

**El Naranjo, Zona 4 Mixco  
Guatemala, C.A.  
Phone: (502) 2-436-7282**

## Miami

- 148,000 Square Feet
- Bonded

**9950 N.W. 17th Street  
Miami, Florida 33172  
(305) 463-4800**



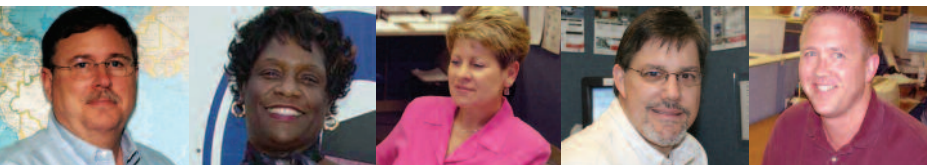
## Jacksonville

- 34,000 Square Feet

**1420 Vantage Way, Unit  
106  
Jacksonville, Florida  
32218  
(904) 741-4841**

For more information on any of our distribution centers contact  
Crowley at (800) 969-4261; (904) 727-2200  
or visit us online at [www.crowley.com](http://www.crowley.com)

**Speed to Market**<sup>SM</sup>



**CROWLEY**<sup>®</sup>  
People Who Know<sup>™</sup>

Liner Shipping • Worldwide Logistics • Petroleum & Chemical Transportation • Alaska Fuel Sales & Distribution • Energy Support • Project Management • Ship Assist & Escort • Ship Management • Ocean Towing & Transportation • Salvage & Emergency Response

© Crowley Maritime Corporation, 2005 CROWLEY is a registered trademark of Crowley Maritime Corporation Speed to Market is a service mark of Crowley Maritime Corporation

[www.crowley.com](http://www.crowley.com)

