

400 L - 400' x 100' x 25' - 121.92 m x 30.48 m x 7.62 m



Specifications

Summer Load Line		
Keel Draft	19' 7"	5.97 m
Summer Load Line Displacement	23,510 ST	21,327.91 MT
Summer Load Line Deadweight	19,646 ST	17,822.55 MT
Lightship Draft (mean)	3' 8"	1.12 m
Lightship Displacement	3,864 ST	3,505.36 MT
Lightship LCG Forward of Transom	208' 8"	63.60 m
Lightship VCG Above Baseline	15' 0"	4.57 m
Draft Mark Locations - Forward of Transom		
Fwd Marks	356'	108.51 m
Aft Marks	44'	13.41 m

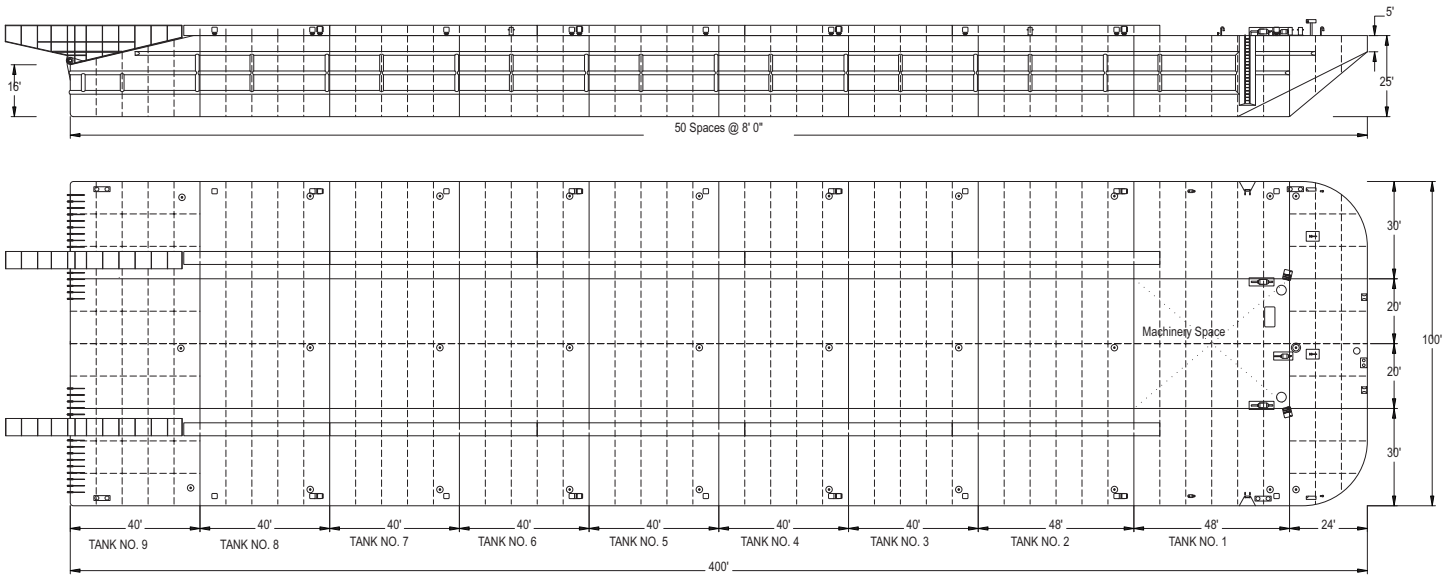
Longitudinal Strength Data

Maximum Allowable Still Water Bending Moments		
In Port	319,668 LT-ft	98,998 MT-m
At Sea	112,124 LT-ft	34,724 MT-m
Maximum Allowable Still Water Shear Force		
In Port	3,738 LT	3,797.98 MT
At Sea	2,265 LT	2,301.35 MT

DWT (MT)	DRAFT (M)	DWT (S/T)	DRAFT (FEET)	DISPL (S/T,S.W.)	TPI
17823	5.0	19646	19	23510	102
17237		19000		23000	
16329		18000	18	22000	103
15422		17000	17	21000	104
14515		16000	16	20000	
13608		15000	15	19000	
12701		14000	14	18000	105
11793		13000	13	17000	
10886		12000	12	16000	
9979		11000	11	15000	104
9072	4.0	10000	10	14000	
8165		9000	9	13000	
7257		8000	8	12000	103
6350		7000	7	11000	
5443		6000	6	10000	
4536		5000	5	9000	102
3629		4000	4	8000	
2722		3000	3	7000	
1814		2000	2	6000	101
907		1000	1	5000	
	3.0	0	0	4000	100
		0	3		

CROWLEY®
People Who Know®

400 L - Summary of Allowable Loads



Transverse Frames

Uniform Linear Load	37,500 lbf/ft	55.81 MT/m
Point Load	346,000 lbs	156.94 MT

Transverse Bulkheads

Uniform Linear Load	39,100 lbf/ft	58.19 MT/m
Point Load		
(only over web frames)	391,150 lbf	177.42 MT

Longitudinal Bulkheads

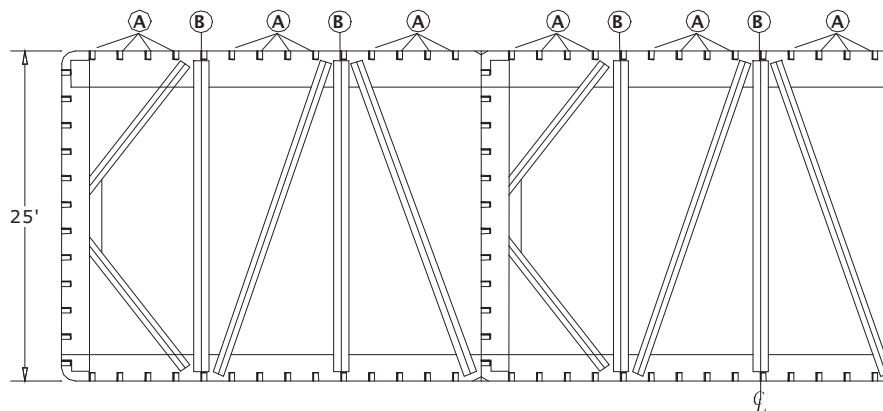
Uniform Linear Load	48,900 lbf/ft	72.77 MT/m
Point Load		
(only over web frames)	391,500 lbf	177.58 MT

Nominal Overall Deck Load Rating

Counting Long'l Stiffeners	3,350 lbf/ft ²	16.38 MT/m ²
Counting only Frames, Rail Girders and Bhds	3,725 lbf/ft ²	18.19 MT/m ²

Intersection of Structures

Transverse and Longitudinal Bulkheads	495 Kips	224.53 MT
Transverse Bulkhead and Side Shell	495 Kips	224.53 MT
Transverse Frame and Side Shell	498 Kips	225.89 MT



A - Longitudinal Stiffeners B - Rail Girders C - Frame Stanchions